

NARROW WALL HYDRANT



HY-1

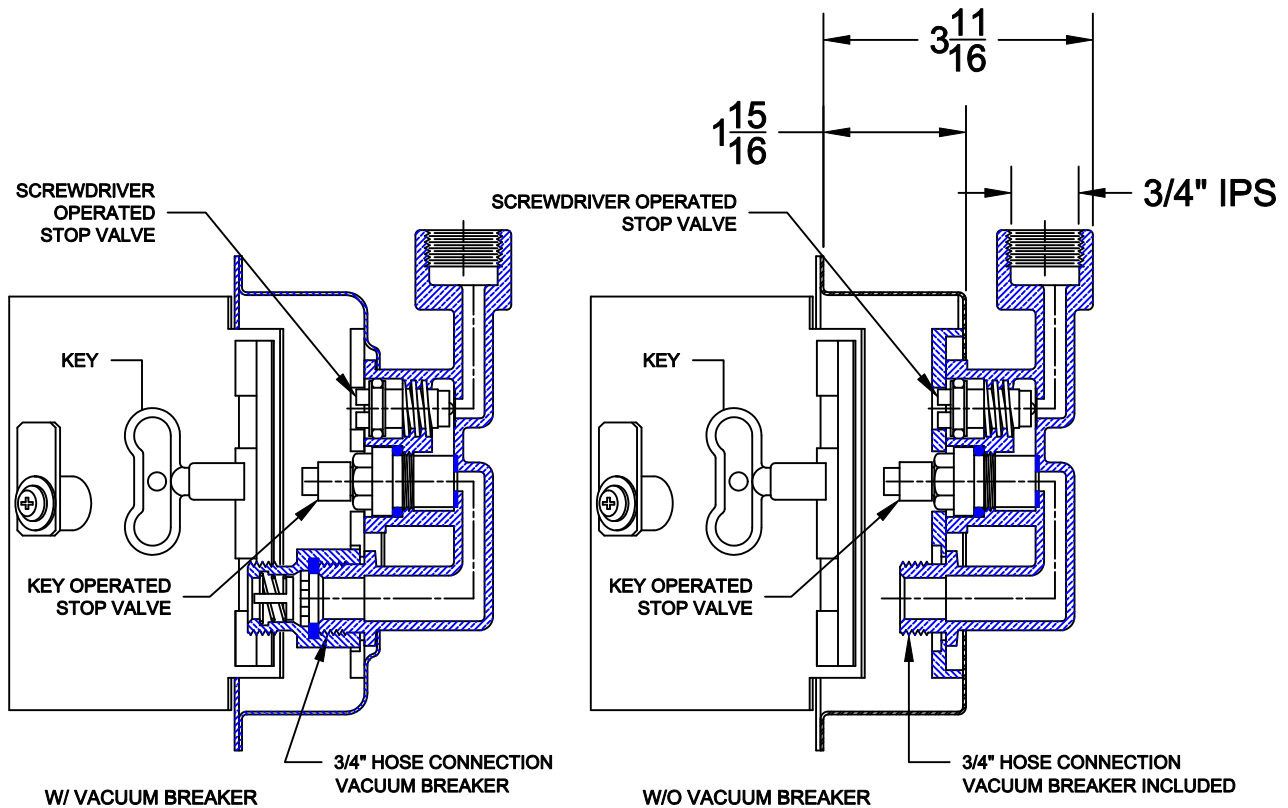
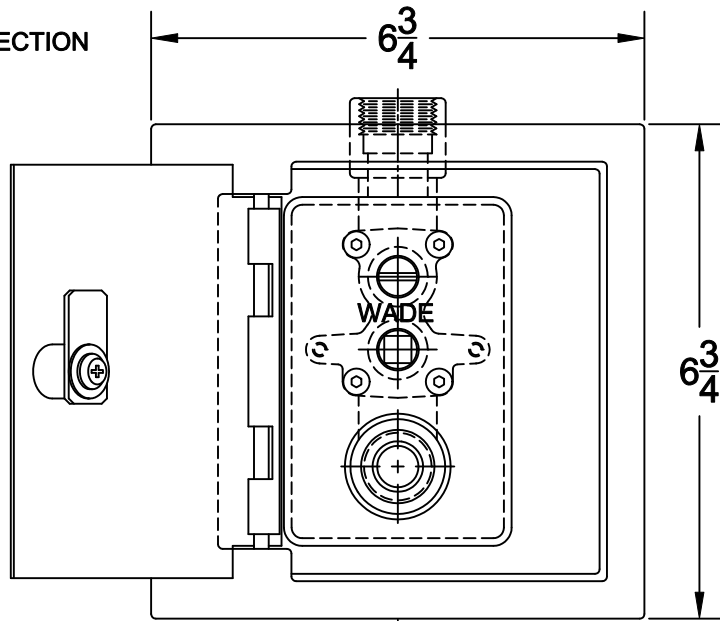
MODERATE CLIMATE WALL HYDRANT WITH BRONZE BODY, SATIN FINISH STAINLESS STEEL BOX, SCREW DRIVER OPERATED STOP VALVE AND TEE HANDLE OPERATED CONTROL VALVE, 3/4" HOSE CONNECTION AND VACUUM BREAKER. OPEN/CLOSE 180° CERAMIC DISC.

3/4" HOSE CONNECTION

3/4" THREADED FEMALE INLET CONNECTION

KEY OPERATED LID LOCK

ALL BRONZE WATER SUPPLY PARTS



NARROW WALL HYDRANT

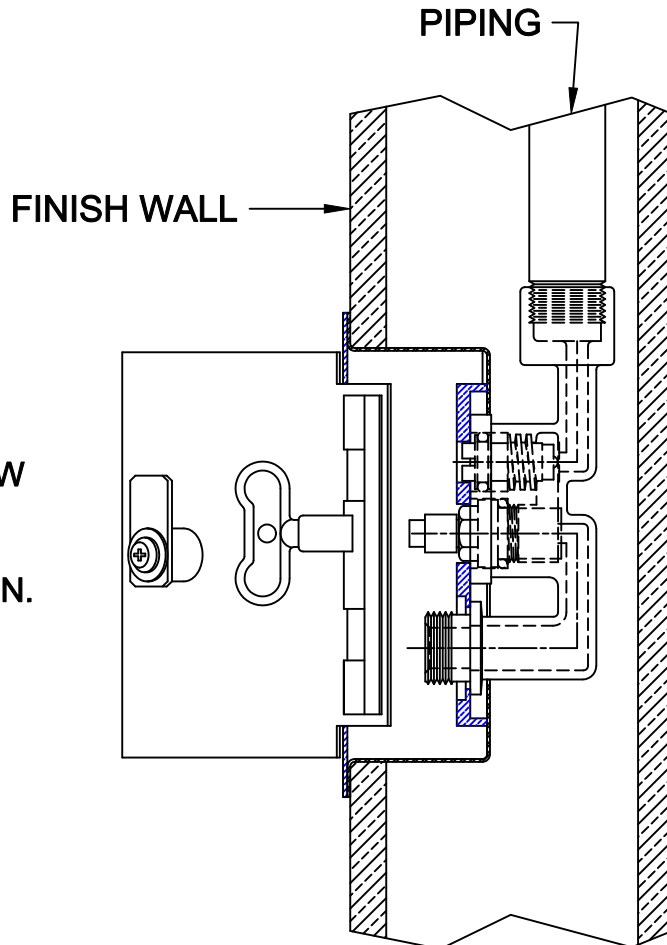


HY-1 OPERATION & MAINTENANCE

MODERATE CLIMATE WALL HYDRANT WITH BRONZE BODY, SATIN FINISH STAINLESS STEEL BOX, SCREW DRIVER OPERATED STOP VALVE AND TEE HANDLE OPERATED CONTROL VALVE, 3/4" HOSE CONNECTION AND VACUUM BREAKER. OPEN/CLOSE 180° CERAMIC DISC.

INSTALLATION

1. WITH UNIT AT DESIRED LOCATION, CONNECT WATER SUPPLY PIPING.
2. AFTER SUPPLY PIPE IS INSTALLED, OPEN SCREW DRIVER STOP VALVE & 180° CERAMIC DISC VALVE - TURN WATER ON.
3. WITH WATER FLOWING, TURN 180° VALVE OFF. CHECK FOR LEAKAGE.

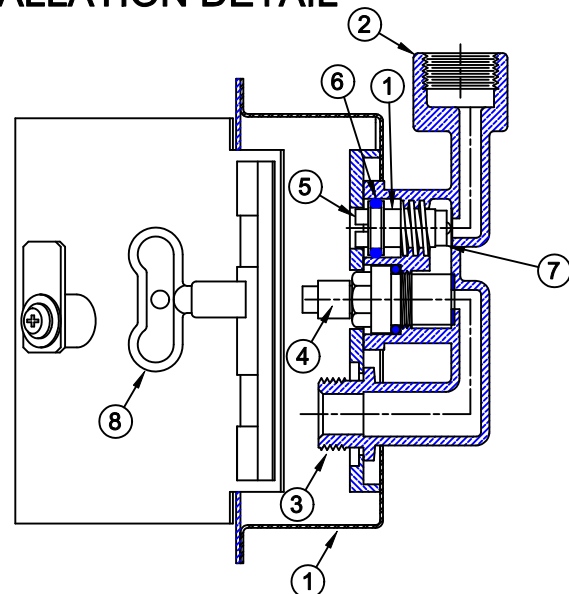


INSTALLATION DETAIL

REPLACEMENT PARTS

NO.	DESCRIPTION	UPC NO.
1	FACE PLATE	670610 433484
2	BRASS HYDRANT BODY	670610 433460
3	VACUUM BREAKER	670610 228899
4	CERAMIC DISC CARTRIDGE *	670610 433477
5	WORM STEM *	670610 433491
6	O-RING *	670610 433507
7	SEAL *	670610 433453
8	KEY *	670610 433651
*	WH-RK REPAIR KIT	670610 431909

* REPAIR KIT INCLUDES ITEMS 4, 5, 6, 7 & 8



REPLACEMENT PARTS

AutoCad.dwg