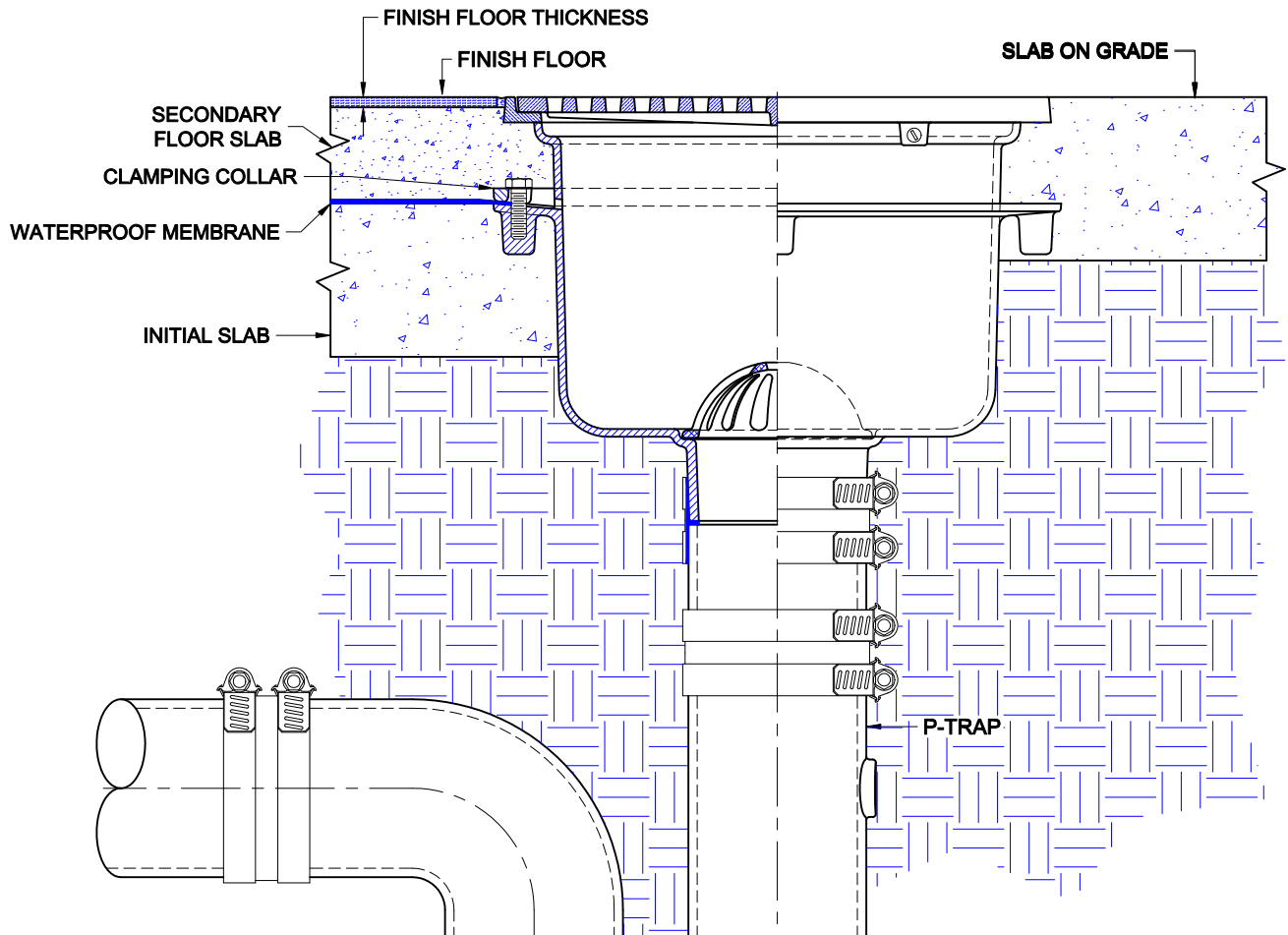
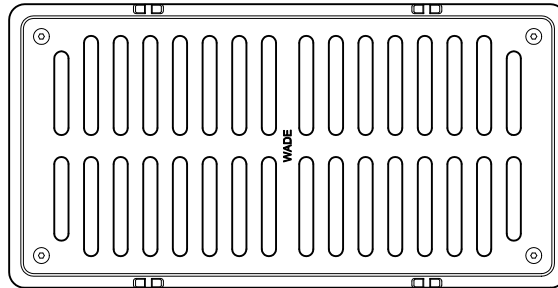


# RECTANGULAR FLOOR SINK



## 9240 SERIES

CAST IRON FLOOR SINK WITH PORCELAIN INTERIOR, SATIN FINISH NICKEL BRONZE TOP, SECURED GRATE AND BOTTOM OUTLET.  
INSTALLATION INSTRUCTIONS



The Wade 9200 floor sink is suitable for various floor construction methods - it is ideally suited for smooth finished stained concrete floors or for ceramic tile applications. The drain piping is first run to an elevation below the expected finish floor level. The piping must include a p-trap and the drain body is secured to the pipe with No-Hub couplings. Use Tyler or Anaco/Husky couplings and secure with a torque wrench to the manufacturers recommendations. Once the body is connected to the pipe, the initial concrete sub-floor is poured to an elevation level with the top flange of the drain body. The waterproofing membrane is applied to the the sub-floor surface up to and around the perimeter of the flange. The optional clamp device is then placed onto the drain and secured - the membrane must be clamped between the body and the clamp device. The top of the drain should be at the finish floor level or slightly below. If a finish floor is to be applied, the top of the drain should extend above the structural slab to a dimension of the thickness of the floor material. For slab-on-grade applications, the body is simply connected to the piping and concrete is poured to the top surface.

Care must be taken to protect the top during installation. Use either cardboard, tape or other materials to protect the top during construction.

AutoCad.dwg

Approval Date: \_\_\_\_\_  
 Customer Approval: \_\_\_\_\_  
 Job Location: \_\_\_\_\_  
 Job Name: \_\_\_\_\_  
 Dimensional Data (Inches/mm) are Subject to Manufacturers Tolerance and Change Without Notice.

Wade Division / Tyler Pipe Assumes No Responsibility For Superseded or Voided Data