

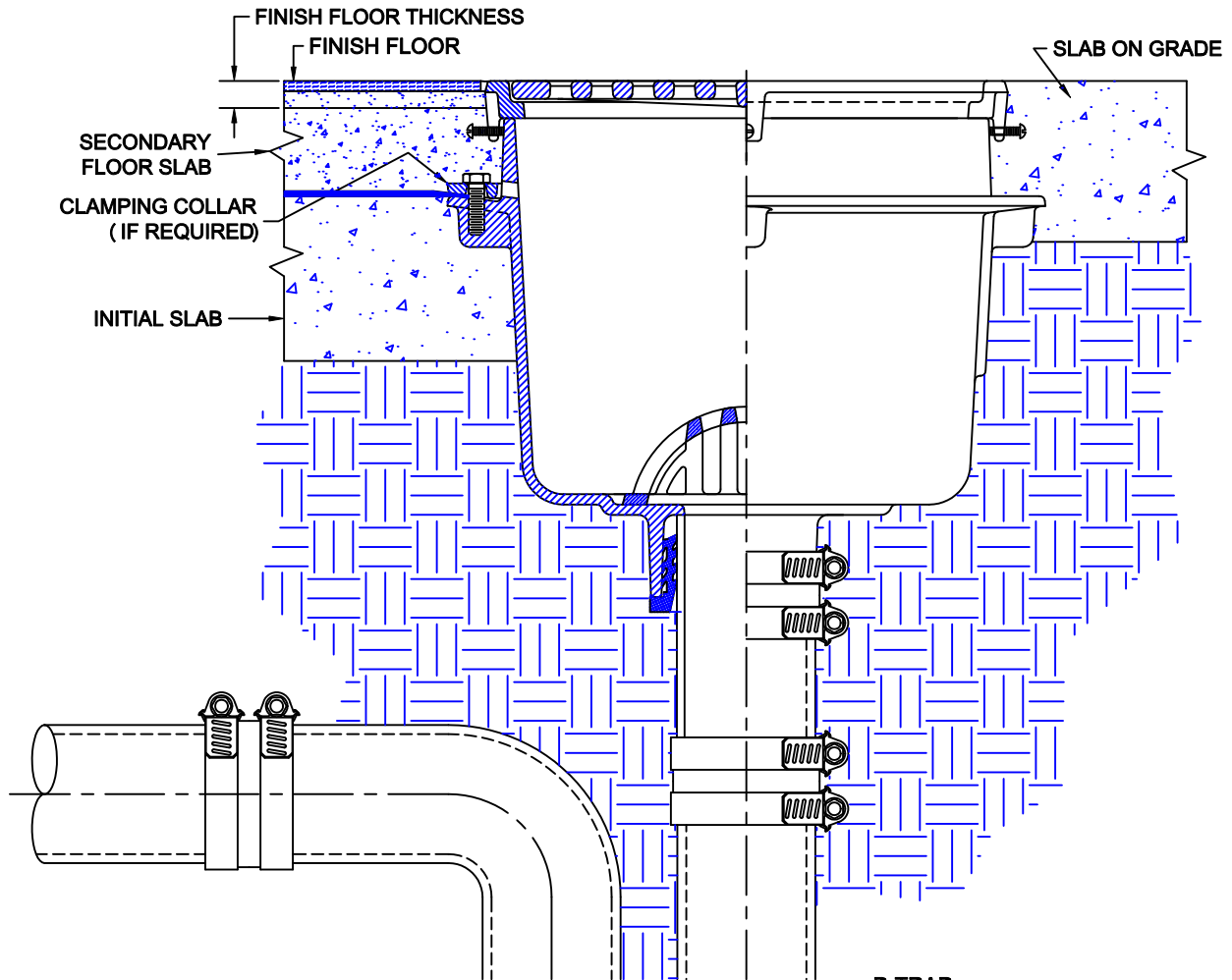
SQUARE FLOOR SINK



9150-64 SERIES

CAST IRON FLOOR SINK WITH PORCELAIN INTERIOR, PORCELAIN COATED CAST IRON TOP, PLASTIC DOME BOTTOM STRAINER AND BOTTOM OUTLET.
INSTALLATION INSTRUCTIONS

NOTE: THE 9150-64 FLOOR SINK HAS A PORCELAIN COATED FRAME AND GRATE WHICH MUST BE IN PLACE BEFORE THE FINAL CONCRETE POUR.



The Wade 9150 floor sink is suitable for various floor construction methods - it is ideally suited for smooth finished stained concrete floors or for ceramic tile applications. The drain piping is first run to an elevation below the expected finish floor level. The piping must include a p-trap and the drain body is secured to the pipe with any of three connections; No-Hub, Inside Caulk, or Push-On Ty-Seal. The type of connection must be specified upon ordering any Wade Drain. If the Ty-Seal connection is specified, apply Tyler Ty-Seal lubricant to the inside surfaces of the gasket and then firmly push the drain body onto the pipe until it contacts the pipe stop in the body. No-Hub outlets should be installed with Tyler or Anaco/Husky couplings and secured with a torque wrench to the manufacturers recommendations. Inside Caulk connections should follow standard industry practices. Once the body is connected to the pipe, the initial concrete sub-floor is poured to an elevation level with the top flange of the drain body. The waterproofing membrane is applied to the sub-floor surface up to and around the perimeter of the flange. The optional clamp device is then placed onto the drain and secured - the membrane must be clamped between the body and the clamp device. The top of the drain should be at the finish floor level or slightly below. If a finish floor is to be applied, the top of the drain should extend above the structural slab to a dimension of the thickness of the floor material. For slab-on-grade applications, the body is simply connected to the piping and concrete is poured to the top surface.

Care must be taken to protect the top during installation. Use either cardboard, tape or other materials to protect the top during construction.

Approval Date

Customer Approval

Job Location

Job Name

Wade Division / Tyler Pipe Assumes No Responsibility For Superseded or Voided Data

Dimensional Data (Inches/mm) are Subject to Manufacturers Tolerance and Change Without Notice.