

# CLEANOUT TEE / ACCESS COVER

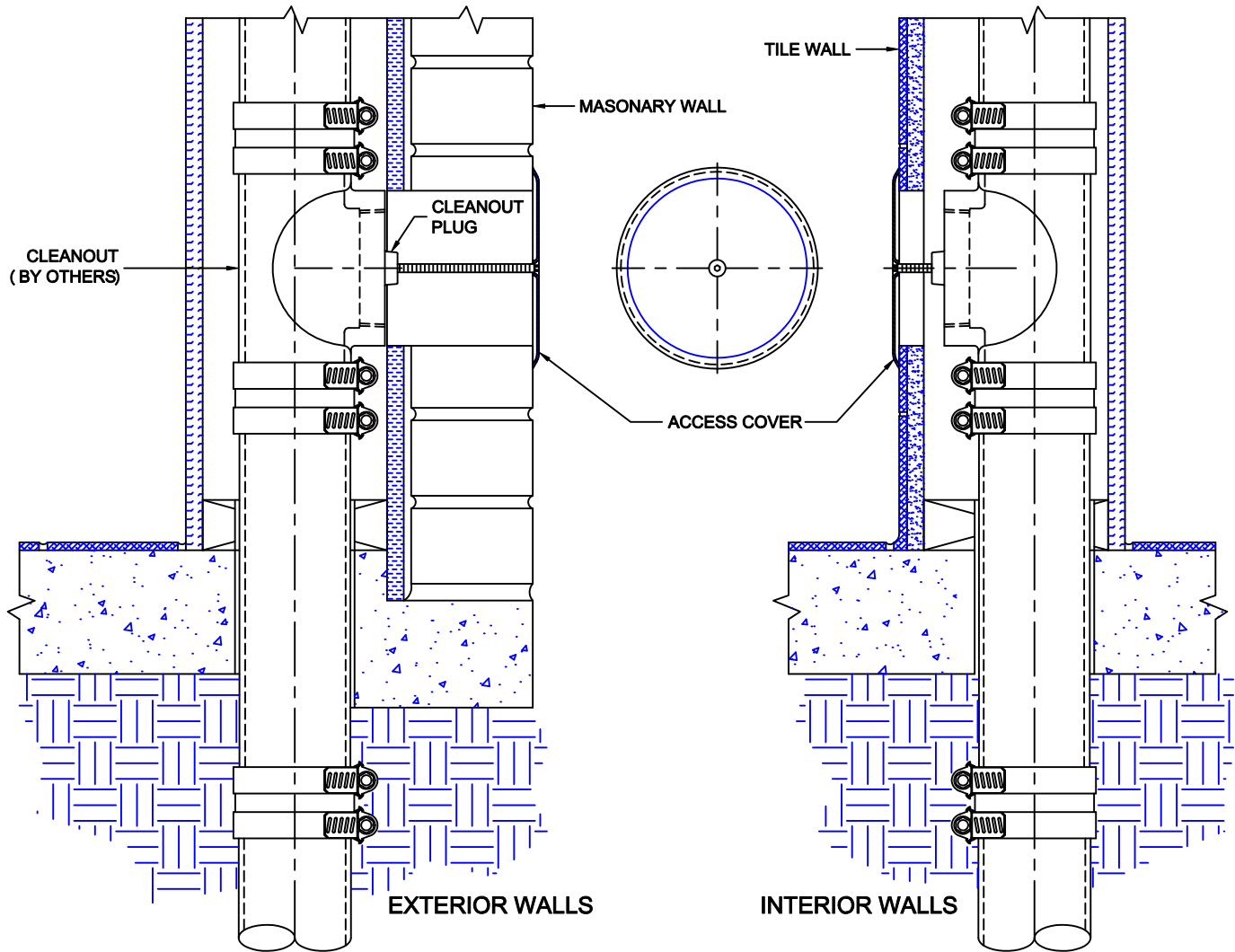


Approval Date  
Customer Approval  
Job Location  
Job Name

8550-R

CAST IRON CLEANOUT TEE WITH ROUND STAINLESS STEEL ACCESS COVER AND CENTER SECURING SCREW.

## INSTALLATION INSTRUCTIONS



The Wade 8550-R provides a cleanout access in the wall. The tee is normally installed in a vertical position with the cleanout facing the wall. The wall access cover is used to cover the cleanout plug. The round access cover is mounted on the surface of the finished wall and is secured by the screw to a tapping which is provided in the cleanout plug. A 3-1/2" long 1/4-20NC screw is provided - screw may require field cutting to exact length as application demands.

The access cover is suitable for either interior or exterior applications.