

# WALL ACCESS COVER



Approval Date

Customer Approval

Job Location

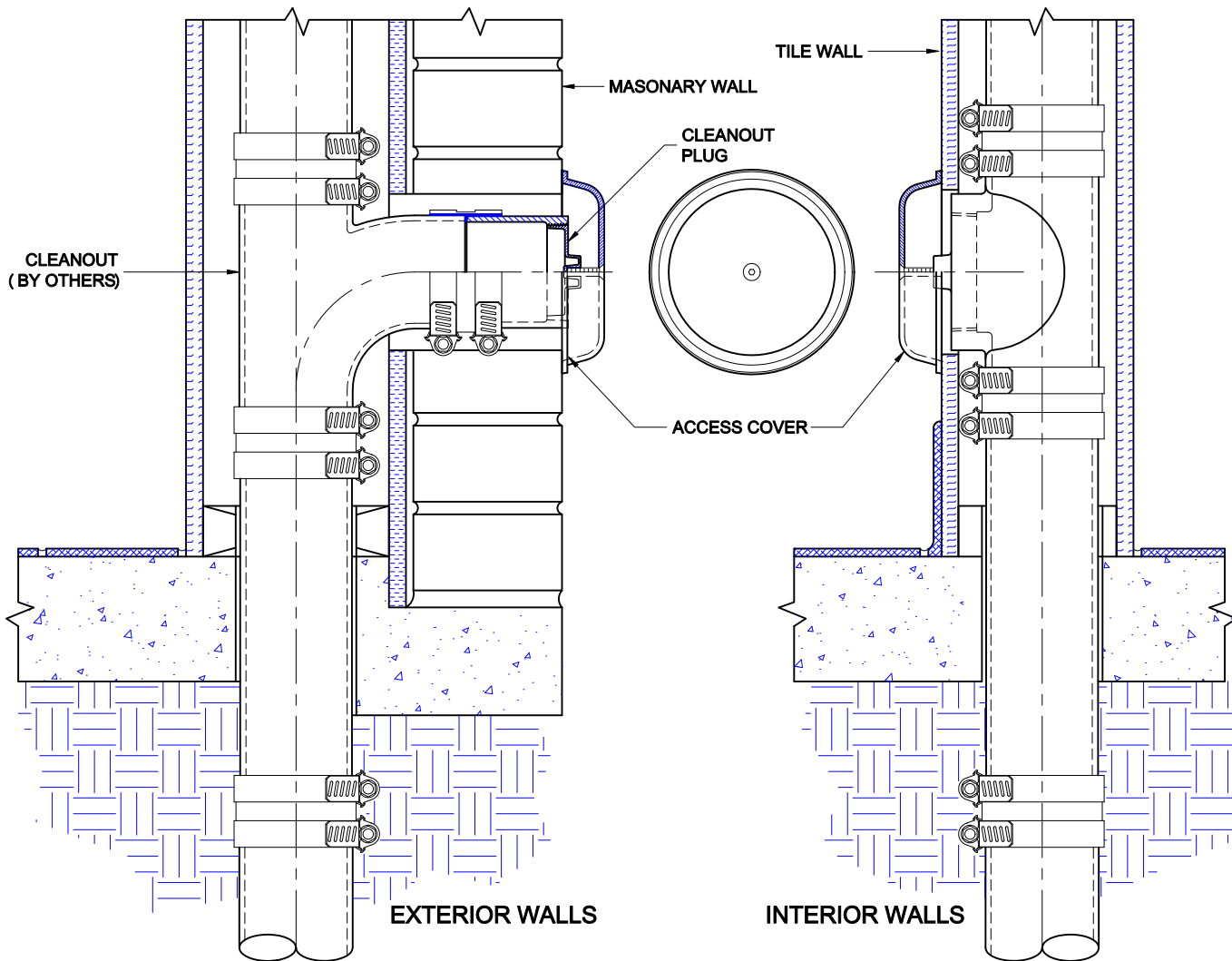
Job Name

Wade Division / Tyler Pipe Assumes No Responsibility For Superseded or Voided Data

## 8480-X

ROUND DISHED SATIN FINISH NICKEL BRONZE ACCESS COVER WITH CENTER SECURING SCREW.

### INSTALLATION INSTRUCTIONS



The Wade 8480-X wall access cover is for used to cover cleanout plugs which protrude beyond the finished wall. The round access cover is mounted on the surface of the finished wall and is secured by the screw to a tapping which must be provided in the cleanout plug. A 3-1/2" long 1/4-20NC screw is provided - screw may require field cutting to exact length as application demands.

The access cover is suitable for either interior or exterior applications.