

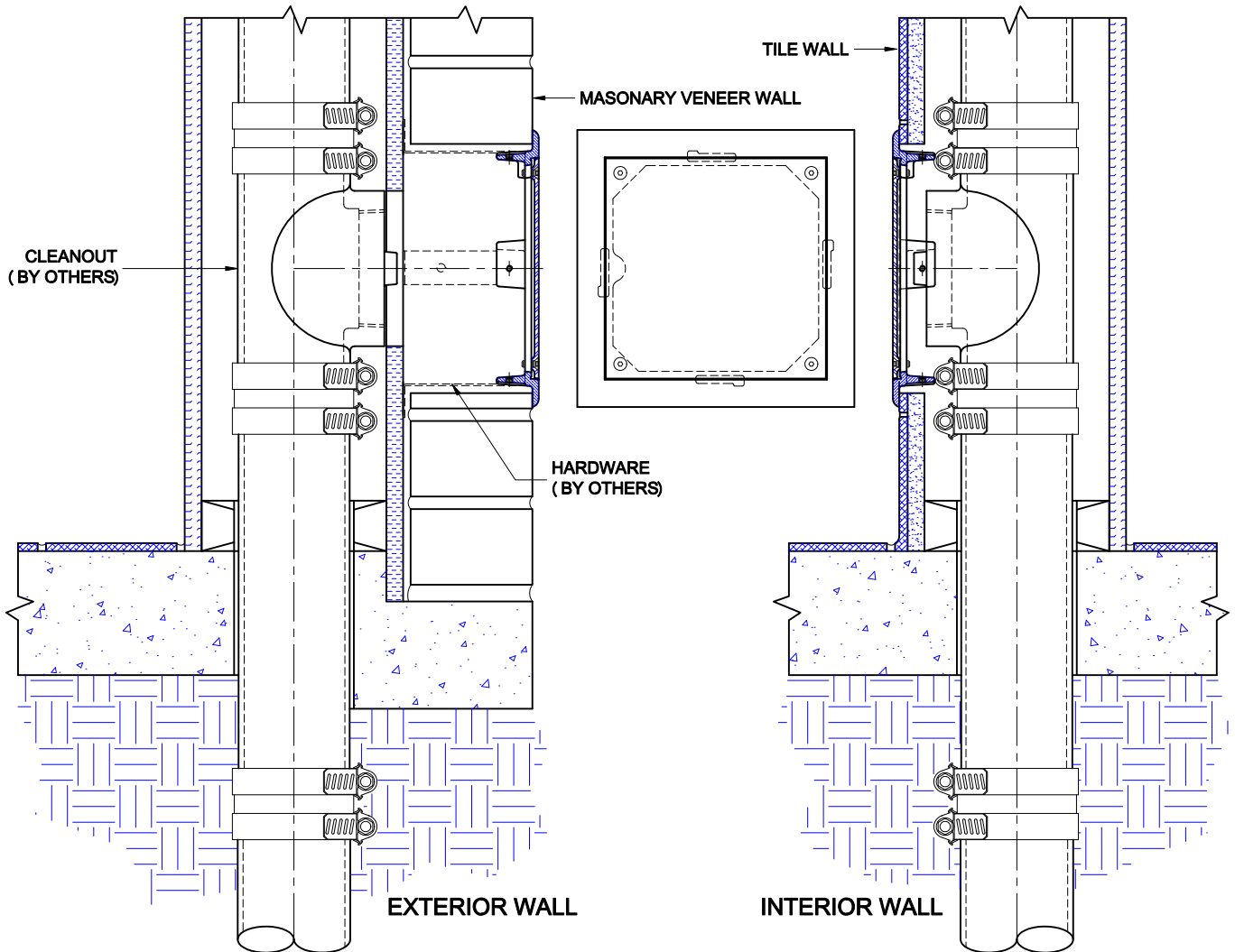
WALL ACCESS COVER



8480-SH

SATIN FINISH WALL ACCESS COVER AND FRAME WITH SMOOTH VANDAL PROOF SECURED COVER.

INSTALLATION INSTRUCTIONS



The Wade 8480-S wall access cover is for used to cover cleanout plugs, valves, controls or other components concealed in walls. The square design lines up with adjacent wall and floor tiles. The mounting lugs provide an easy means of securing the frame to the wall construction.

The access cover is designed to be surface mounted and is suitable for interior or exterior applications. For masonry veneer or tile wall applications, the unit is mounted over the wall opening with anchors and screws. For interior dry wall construction, the access cover is secured to the wall backing with set screws.

Care must be taken to protect the cover during installation. Use either cardboard, tape or other protective materials.