

WALL ACCESS COVER

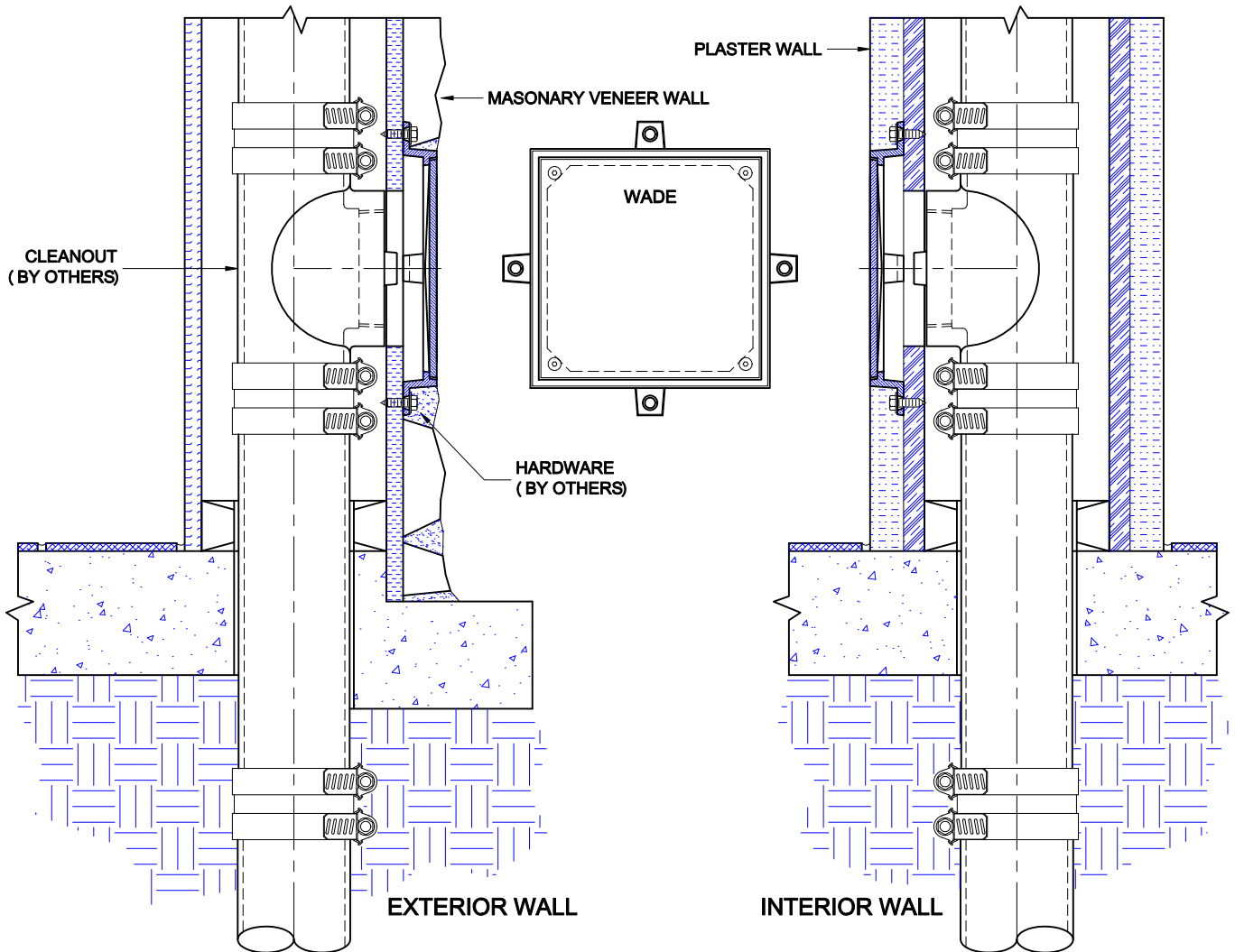


Approval Date
Customer Approval
Job Location
Job Name

8480-S

SATIN FINISH WALL ACCESS COVER AND FRAME WITH SMOOTH VANDAL PROOF SECURED COVER.

INSTALLATION INSTRUCTIONS



The Wade 8480-S wall access cover is for used to cover cleanout plugs, valves, controls or other components concealed in walls. The square design lines up with adjacent wall and floor tiles. The mounting lugs provide an easy means of securing the frame to the wall construction.

The access cover is designed to be flush mounted and is suitable for interior or exterior applications. For masonry veneer or tile wall applications, the unit is mounted over the wall opening with anchors or screws. The finish wall material is applied up to the perimeter of the frame and grout is applied. For plaster or wet wall construction, the access cover is secured to the wall backing and the wet wall is applied flush with the face of the access frame.

Care must be taken to protect the cover during installation. Use either cardboard, tape or other protective materials.

AutoCad.dwg