

# WALL ACCESS COVER



Approval  
Date

8480-C

SATIN FINISH WALL ACCESS COVER AND FRAME WITH SMOOTH VANDAL PROOF SECURED COVER.

## INSTALLATION INSTRUCTIONS

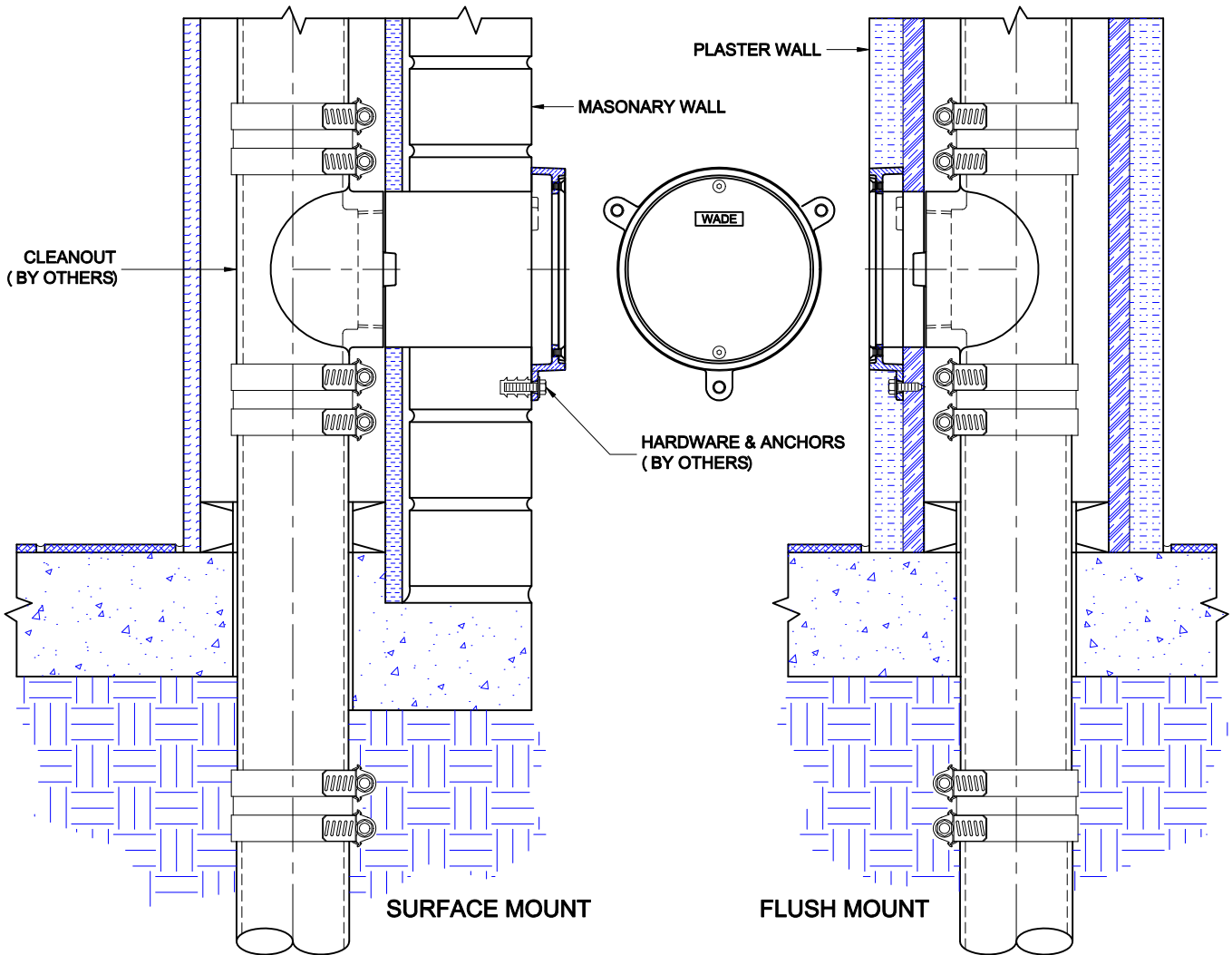
Customer  
Approval

Wade Division / Tyler Pipe Assumes No Responsibility For Superseded or Voided Data

Job  
Location

Dimensional Data (Inches/mm) are Subject to Manufacturers Tolerance and Change Without Notice.

Job  
Name



The Wade 8480-C wall access cover is for used to cover cleanout plugs, valves, controls or other components concealed in walls. The round design eliminates the necessity of lining up with adjacent floors, walls, etc. The mounting lugs provide an easy means of securing the frame to the wall construction.

The access cover can be either surface or flush mounted and is suitable for interior or exterior applications. Surface mount is typically for masonry, tile or dry wall applications and is mounted over the wall opening with anchors. The flush mount is for plaster or wet wall construction. The access cover is secured to the wall backing and the wet wall is applied flush with the face of the access frame.

Care must be taken to protect the cover during installation. Use either cardboard, tape or other protective materials.

AutoCad.dwg