

# FLOOR ACCESS HOUSING



Approval Date

8400-Z

CAST IRON FLOOR ACCESS HOUSING WITH DUCTILE IRON TOP ASSEMBLY, HEAVY DUTY VANDAL PROOF SECURED TRACTOR STYLE COVER, THUMB SCREWS AND BOTTOM OUTLET.  
INSTALLATION INSTRUCTIONS

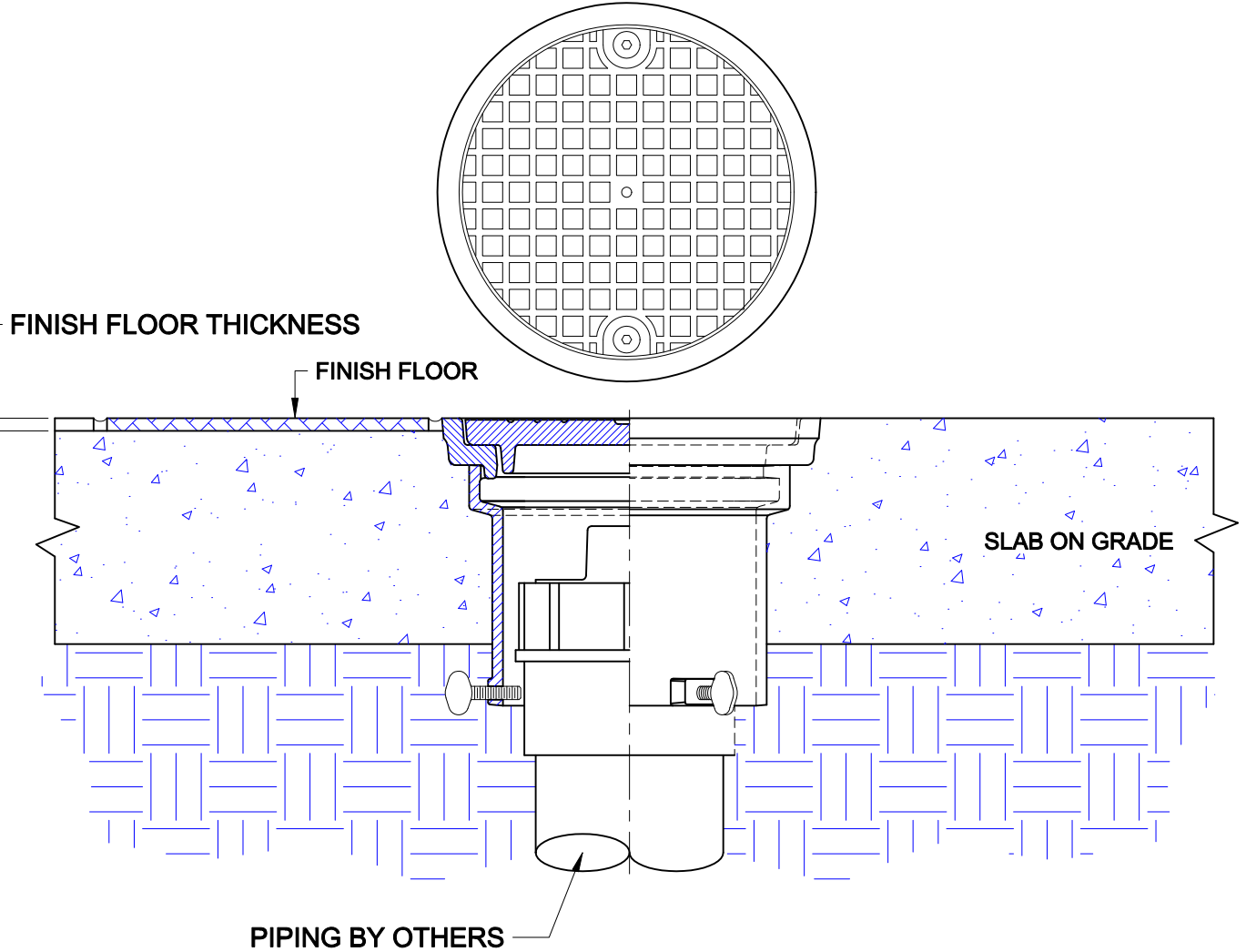
Customer Approval

Wade Division / Tyler Pipe Assumes No Responsibility For Superseded or Voided Data

Job Location

are Subject to Manufacturers Tolerance and Change Without Notice.

Job Name



The Wade 8400-Z floor access housing is for slab on grade construction methods - it is ideally suited for smooth finished stained concrete floors or for exterior applications where vehicular traffic is anticipated. The drain piping is first run to an elevation below the expected finish floor level. The cleanout is terminated below the finish floor level. The top assembly is pre-installed onto the cast iron housing. Loosen the thumb screws and place the housing over the cleanout. Using a string line or laser level, position the top of the housing level with the anticipated finish floor and tighten the thumb screws.

Pour concrete up to and around the perimeter of the top. If a finish floor material is to be used, the top should extend above the structural slab the dimension of the finished floor thickness.

# FLOOR ACCESS HOUSING



Approval Date

Customer Approval

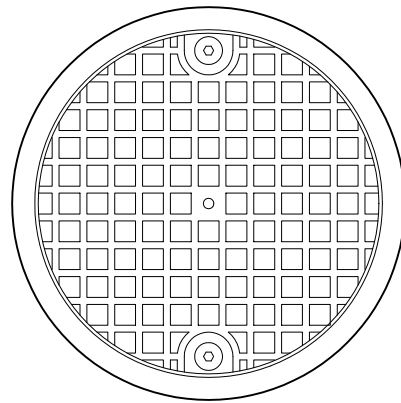
Job Location

Job Name

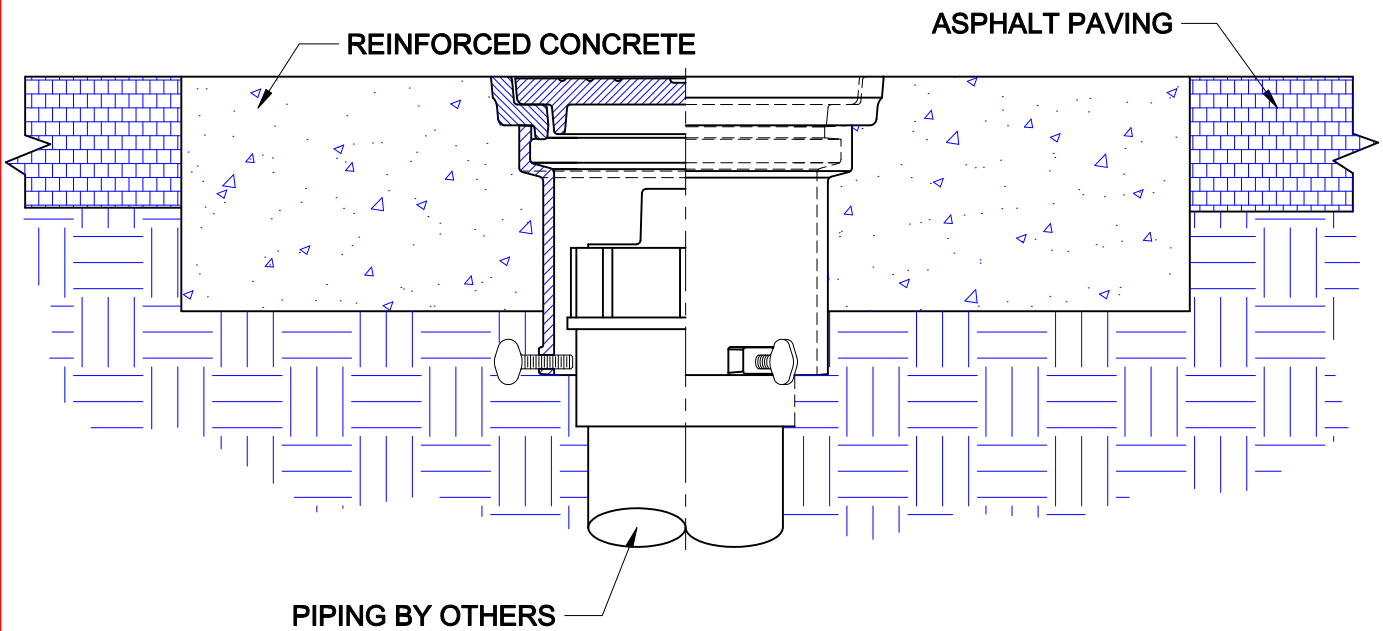
Dimensional Data (Inches/mm) are Subject to Manufacturers Tolerance and Change Without Notice. Wade Division / Tyler Pipe Assumes No Responsibility For Superseded or Voided Data

**8400-Z**

CAST IRON FLOOR ACCESS HOUSING WITH DUCTILE IRON TOP ASSEMBLY, HEAVY DUTY VANDAL PROOF SECURED TRACTOR STYLE COVER, THUMB SCREWS AND BOTTOM OUTLET.  
**INSTALLATION INSTRUCTIONS**



24" SQUARE



## INSTALLATION IN PAVED PARKING AREAS

If the access housing is to be installed in paved areas subject to vehicular traffic, provision must be made for adequate support. Wade recommends the access housing be installed into a re-inforced concrete pad of sufficient thickness for the anticipated wheel load. The pad must extend from the center of the cleanout a minimum of 12". This method is to keep weight from transferring to the connected piping.