

# FLOOR ACCESS HOUSING



Approval Date

Customer Approval

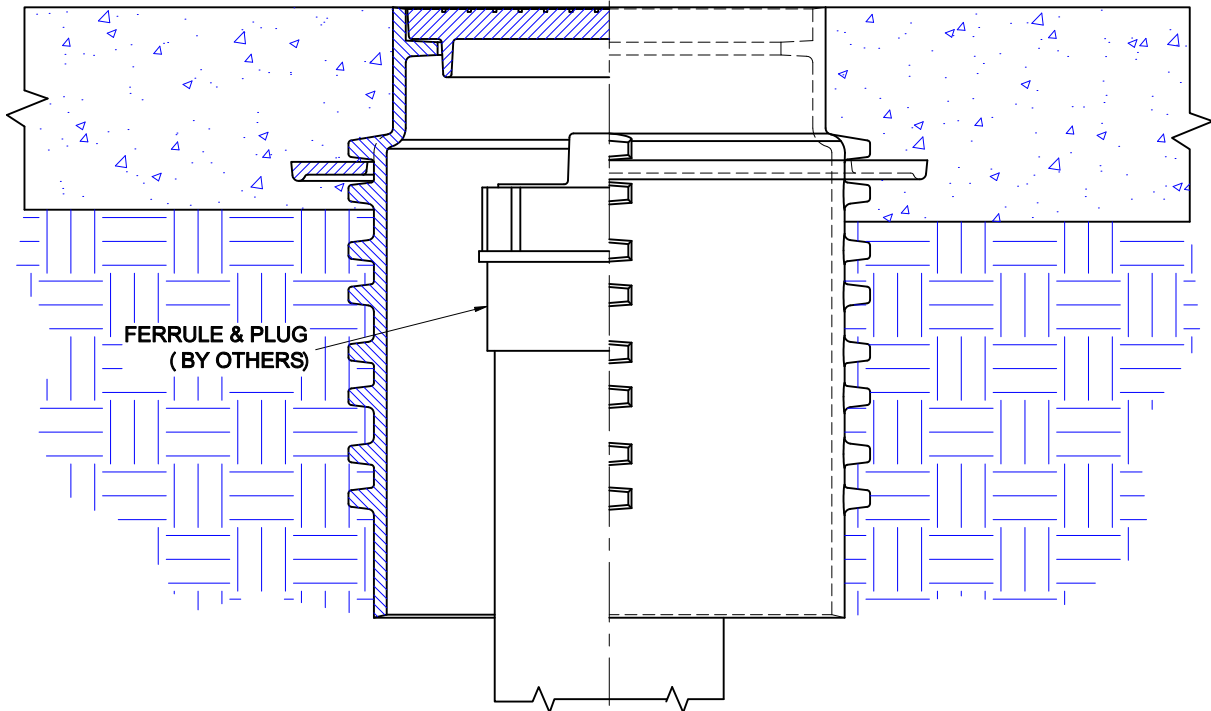
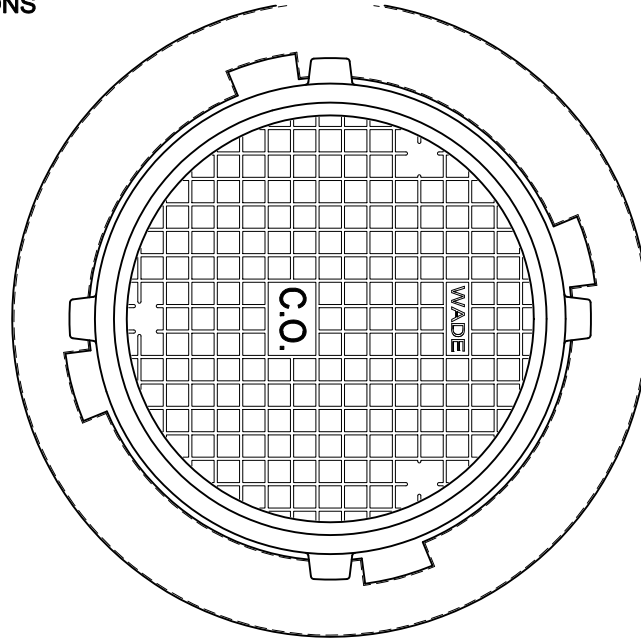
Job Location

Job Name

Wade Division / Tyler Pipe Assumes No Responsibility For Superseded or Voided Data

## 8300-MF

CAST IRON FLOOR ACCESS HOUSING WITH DUCTILE IRON TRACTOR STYLE COVER AND ADJUSTABLE ANCHOR FLANGE.  
INSTALLATION INSTRUCTIONS



The Wade 8300-MF floor access housing is for slab on grade construction - it is ideally suited for smooth finished stained concrete floors or for exterior applications where vehicular traffic is anticipated. The drain piping is first run to an elevation below the expected finish floor level. The cleanout is terminated below the finished floor level. The anchor flange provided with the housing should be moved to a position that will be encased in concrete. Use rebar or other means to support the housing - the access cover should be level with the anticipated top surface of the concrete pour.

Pour concrete up to and around the perimeter for the top. If the application is to be asphalt paving, see page 2 for recommendations.

AutoCad.dwg

# FLOOR ACCESS HOUSING



Approval Date

Customer Approval

Job Location

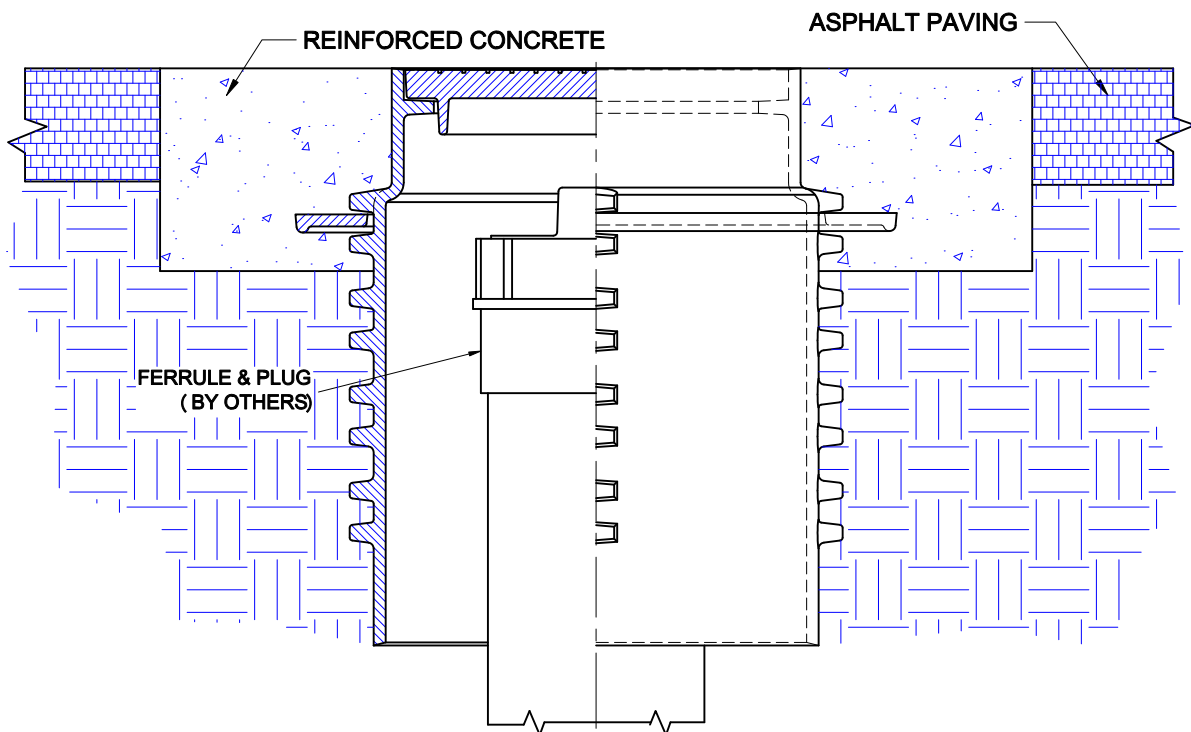
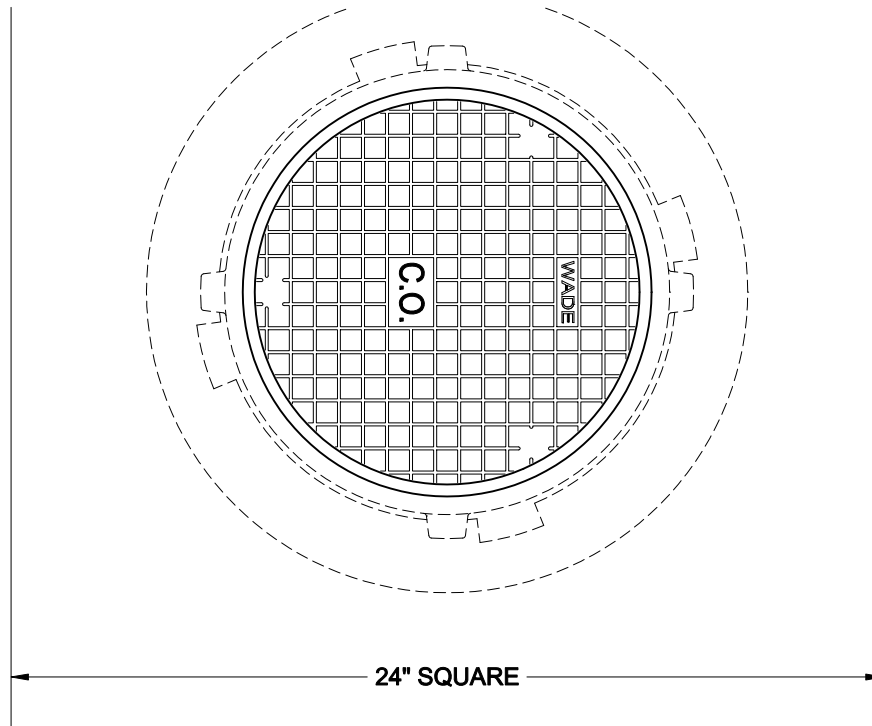
Job Name

Wade Division / Tyler Pipe Assumes No Responsibility For Superseded or Voided Data

Dimensional Data (Inches/mm) are Subject to Manufacturers Tolerance and Change Without Notice.

**8300-MF**

CAST IRON FLOOR ACCESS HOUSING WITH DUCTILE IRON TRACTOR STYLE COVER AND ADJUSTABLE ANCHOR FLANGE.



## INSTALLATION IN PAVED PARKING AREAS

If the access housing is to be installed in paved areas subject to vehicular traffic, provision must be made for adequate support. Wade recommends the access housing be installed into a re-inforced concrete pad of sufficient thickness for the anticipated wheel load. The pad must extend from the center of the cleanout a minimum of 12".

AutoCad.dwg