

# FLOOR ACCESS COVER

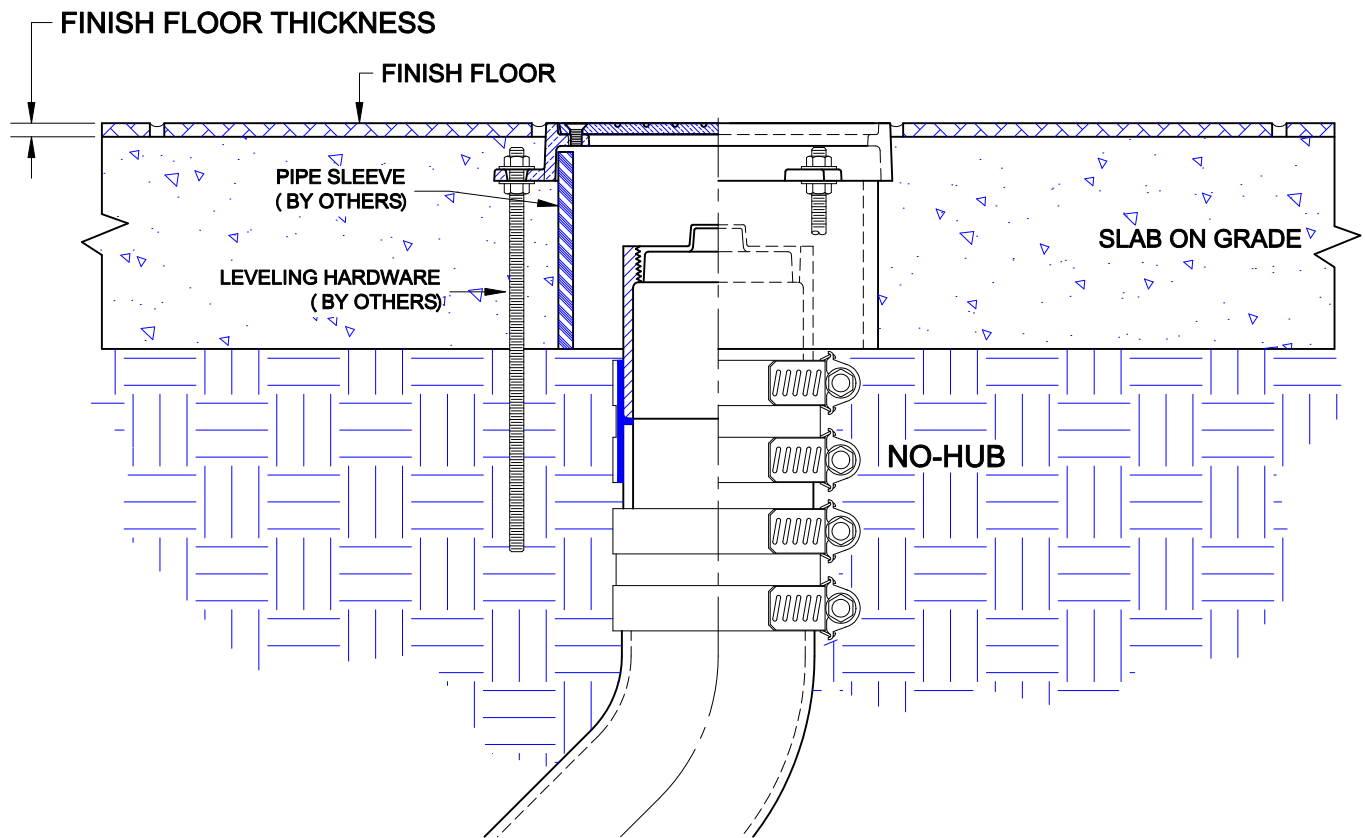
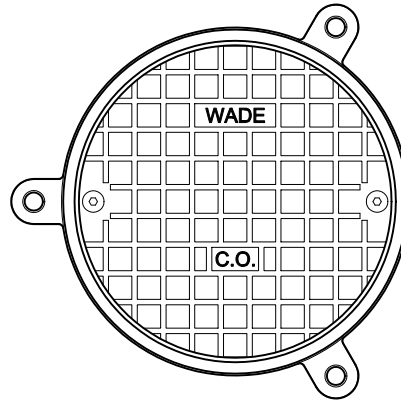


Approval Date: \_\_\_\_\_  
 Customer Approval: \_\_\_\_\_  
 Job Location: \_\_\_\_\_  
 Job Name: \_\_\_\_\_

8300-C

SATIN FINISH FLOOR ACCESS COVER AND FRAME WITH SCORIATED VANDAL PROOF SECURED COVER.

## INSTALLATION INSTRUCTIONS



The Wade 8300-C floor access cover is for slab on grade floor construction and provides access to plumbing cleanouts or other components. The drain piping is first run to an elevation below the expected finish floor level. The cleanout or other component is terminated below the finish floor level. The contractor provides a pipe sleeve to house the cleanout and the 8300-C access cover/frame provides the floor level access. Perimeter tabs on the frame are for threaded rods and hardware to allow easy leveling of the top.

The access cover should be level with the top surface of the finished floor. Pour concrete up to and around the perimeter of the top. If a finish floor material is to be used, the top should extend above the structural slab the dimension of the finished floor thickness.

Care must be taken to protect the top during installation. Use either cardboard, tape or other protective materials.

AutoCad.dwg