

NON-ADJUSTABLE FLOOR CLEANOUT



8200

CAST IRON NON-ADJUSTABLE FLOOR CLEANOUT WITH SATIN FINISH NICKEL BRONZE TOP ASSEMBLY, VANDAL PROOF SECURED COVER AND BOTTOM OUTLET. INSTALLATION INSTRUCTIONS

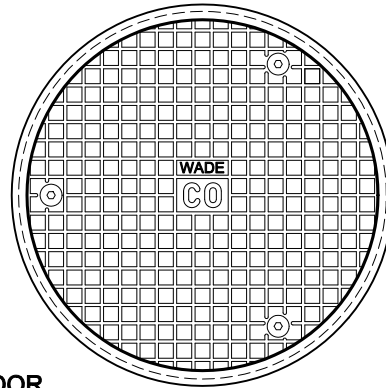
Approval Date

Customer Approval

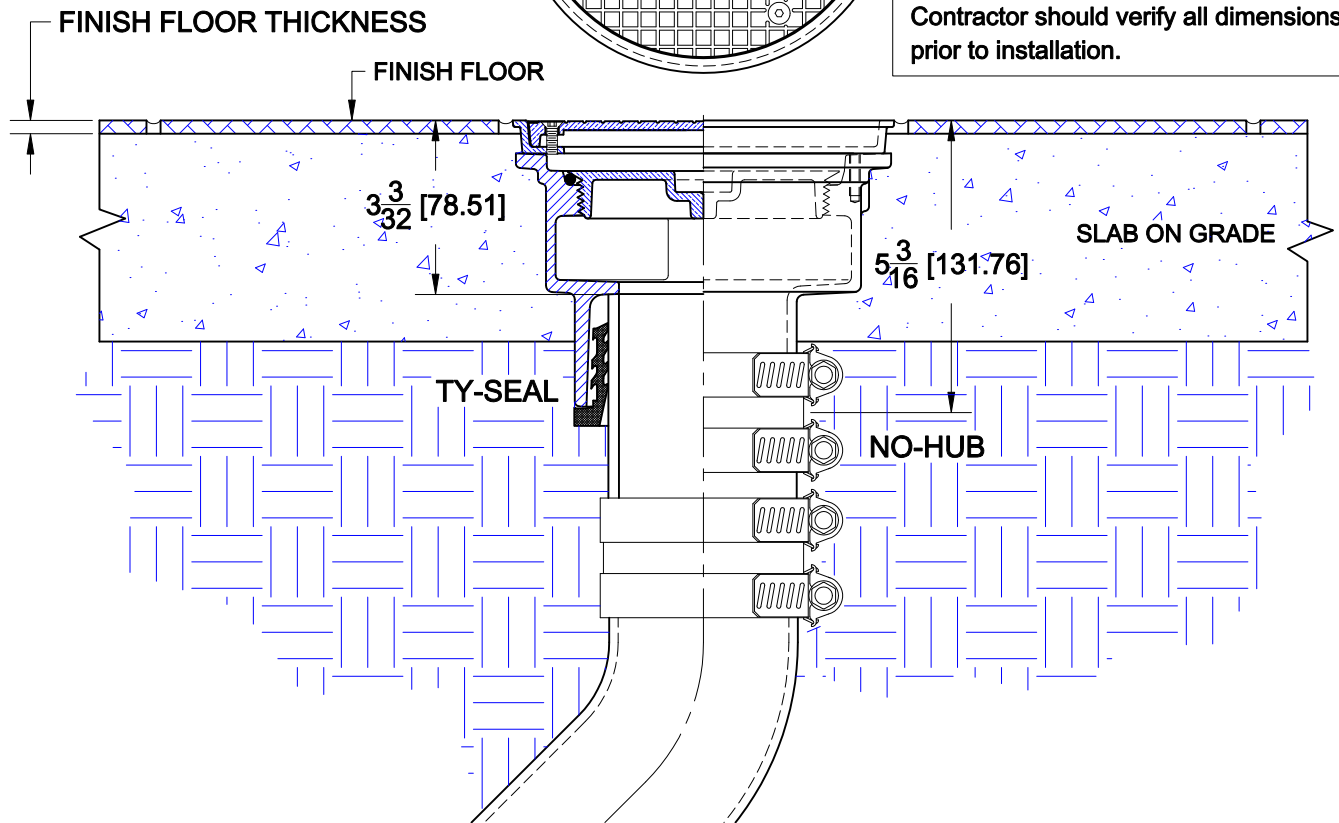
Job Location

Job Name

Wade Division / Tyler Pipe Assumes No Responsibility For Superseded or Voided Data
are Subject to Manufacturers Tolerance and Change Without Notice.



Dimensions are for reference only. Contractor should verify all dimensions prior to installation.



The Wade 8200 floor cleanout is for most floor constructions. The drain piping is first run to an elevation below the expected finish floor level. The body (ferrule) is secured to the pipe with one of two connections; No-Hub or Push-On Ty-Seal. The type of connection must be specified upon ordering most Wade cleanouts. If the Ty-Seal connection is specified, apply Tyler Ty-Seal lubricant to the inside surfaces of the gasket and then firmly push the cleanout ferrule onto the pipe until it contacts the pipe stop in the body. No-Hub outlets should be installed with Tyler or Anaco/Husky couplings and secured with a torque wrench to the manufacturers recommendations.

The 8200 is designed for slab on grade construction. The top assembly is pre-installed onto the ferrule. Rough-in vertical pipe to allow the cleanout top to be level with the top surface of the finished floor. Pour concrete up to and around the perimeter of the top. If a finish floor material is to be used, the top should extend above the structural slab the dimension of the finished floor thickness.

Note that the top assembly should be above the structural slab to accommodate the finish floor material. Care must be taken to protect the top during installation. A plastic cover is provided and should remain in place until after the installation of the finish floor is complete. If the plastic protector is lost, use either cardboard, tape or other protective materials.