

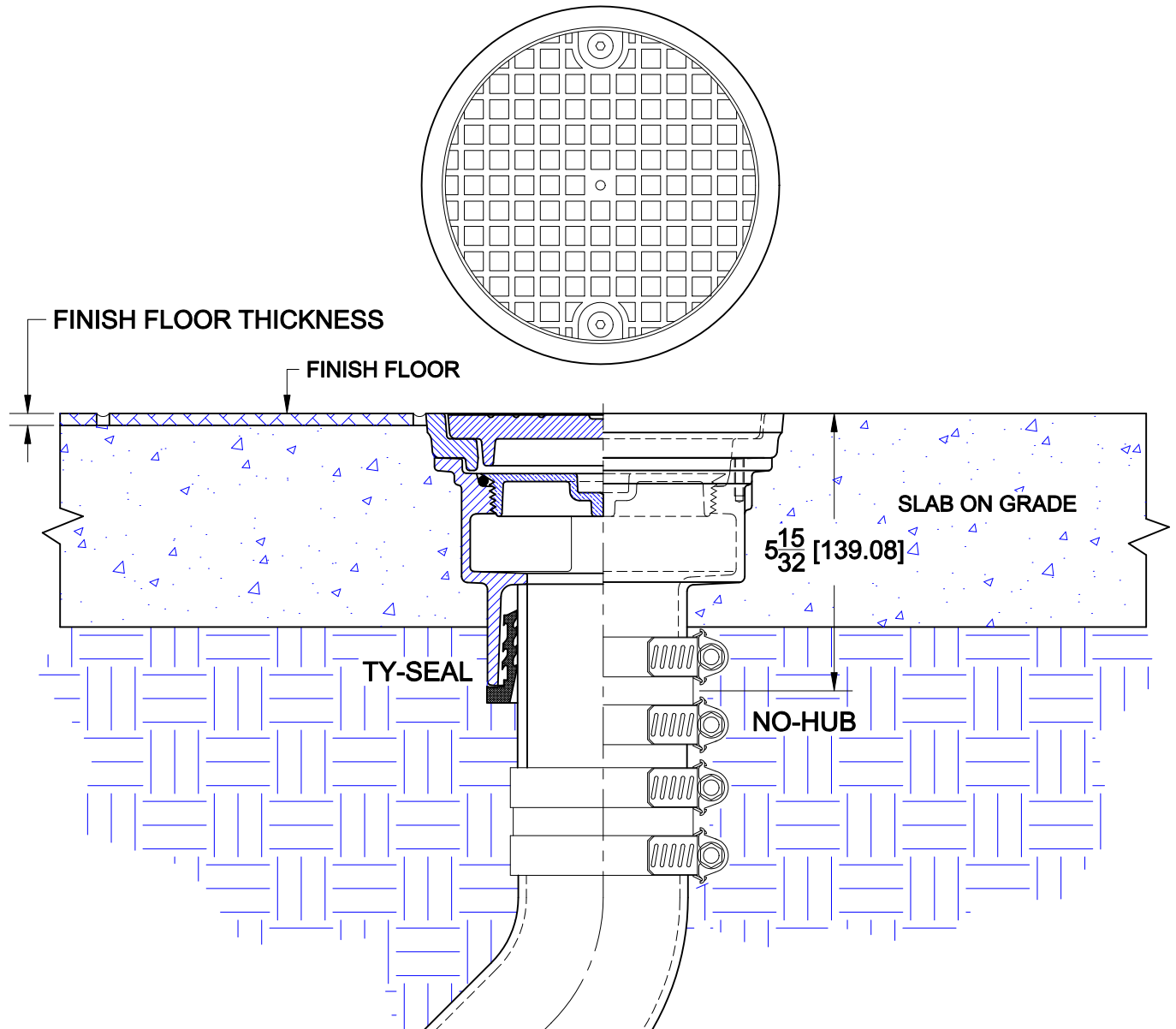
FLOOR CLEANOUT



Approval Date
 Customer Approval
 Job Location
 Job Name

8200-Z

CAST IRON FLOOR CLEANOUT WITH DUCTILE IRON TOP ASSEMBLY, HEAVY DUTY VANDAL PROOF SECURED TRACTOR STYLE COVER AND BOTTOM OUTLET.
 INSTALLATION INSTRUCTIONS



The Wade 8200-Z floor cleanout is for various floor construction methods - it is ideally suited for smooth finished stained concrete floors or for exterior applications where vehicular traffic is anticipated. The drain piping is first run to an elevation below the expected finish floor level. The body (ferrule) is secured to the pipe with one of two connections; No-Hub or Push-On Ty-Seal. The type of connection must be specified upon ordering most Wade cleanouts. If the Ty-Seal connection is specified, apply Tyler Ty-Seal lubricant to the inside surfaces of the gasket and then firmly push the cleanout ferrule onto the pipe until it contacts the pipe stop in the body. No-Hub outlets should be installed with Tyler or Anaco/Husky couplings and secured with a torque wrench to the manufacturers recommendations. Inside Caulk connections should follow standard industry practices.

The 8200-Z is for slab on grade construction. The top assembly is pre-installed on the ferrule. Rough-in the vertical pipe to allow the cleanout top to be level with the top surface of the finished floor. Pour concrete up to and around the perimeter of the top. If a finish floor material is to be used, the top should extend above the structural slab the dimension of the finished floor thickness.

AutoCad.dwg

FLOOR CLEANOUT



Approval Date

Customer Approval

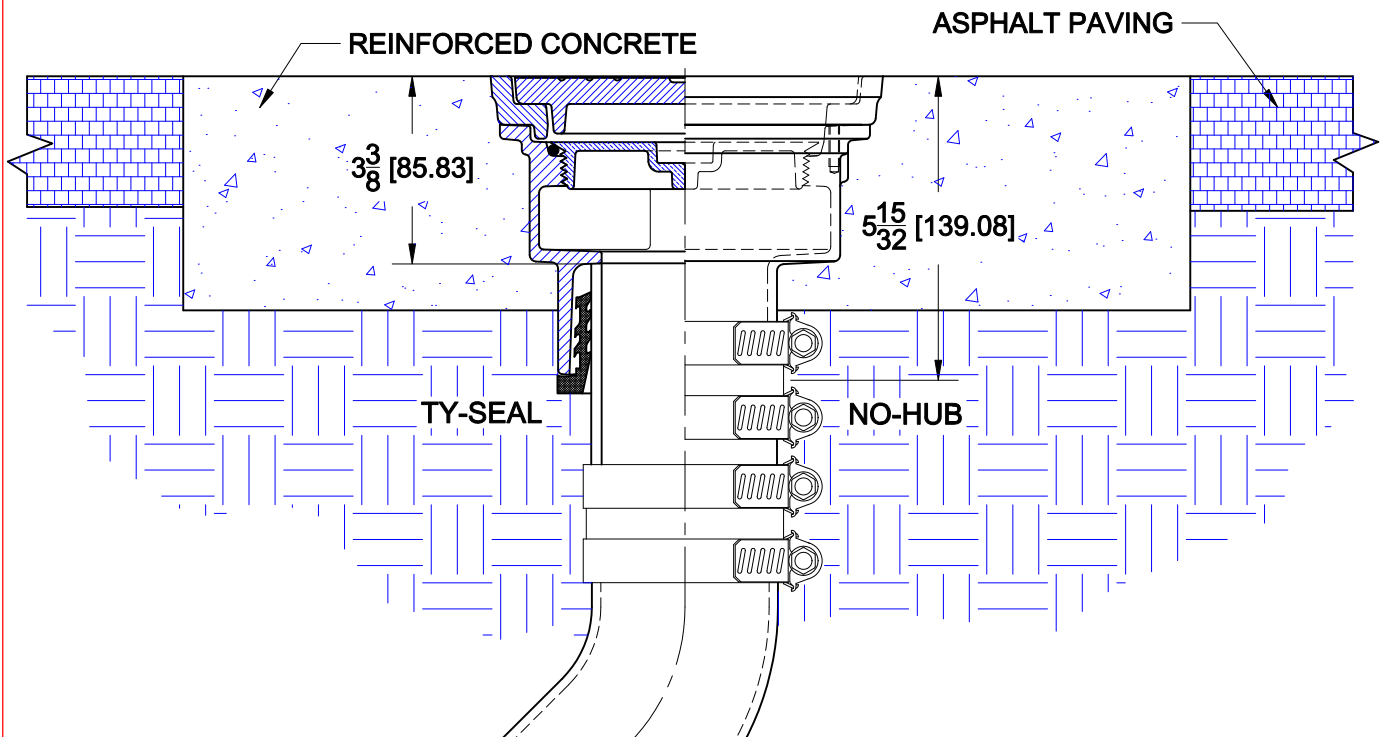
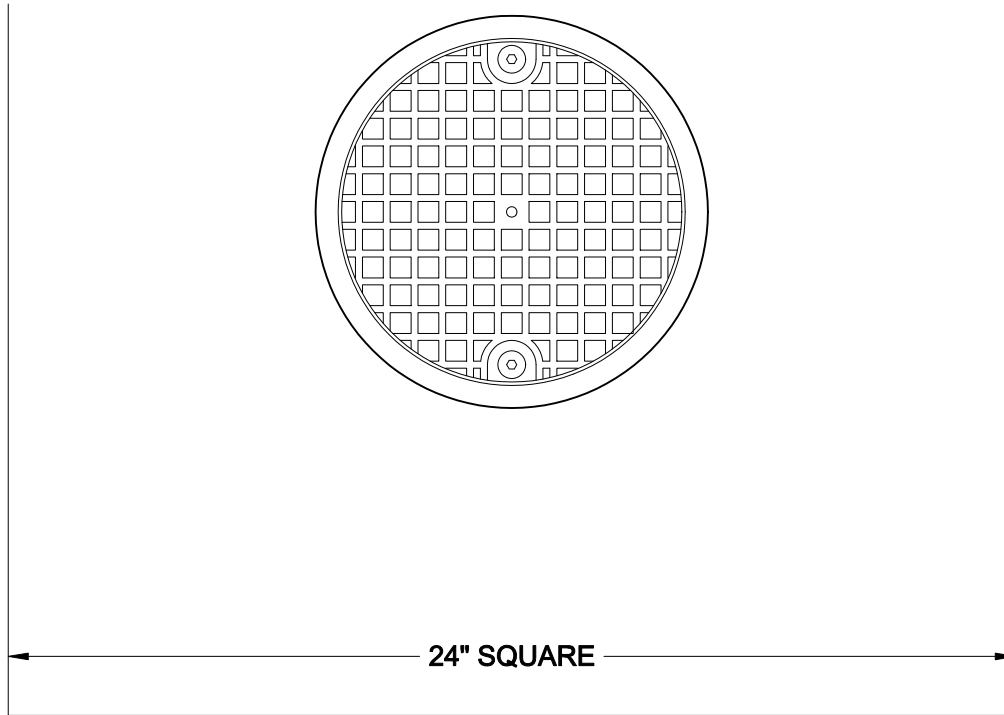
Job Location

Job Name

Dimensional Data (Inches/mm) are Subject to Manufacturers Tolerance and Change Without Notice. Wade Division / Tyler Pipe Assumes No Responsibility For Superseded or Voided Data

8200-Z

CAST IRON FLOOR CLEANOUT WITH DUCTILE IRON TOP ASSEMBLY, HEAVY DUTY VANDAL PROOF SECURED TRACTOR STYLE COVER AND BOTTOM OUTLET.



INSTALLATION IN PAVED PARKING AREAS

If the cleanout is to be installed in paved areas subject to vehicular traffic, provision must be made for adequate support. Wade recommends the cleanout be installed into a re-inforced concrete pad of sufficient thickness for the anticipated wheel load. The pad must extend from the center of the cleanout a minimum of 12". This method is to keep weight from transferring to the connected piping.

AutoCad.dwg