

ADJUSTABLE FLOOR CLEANOUT

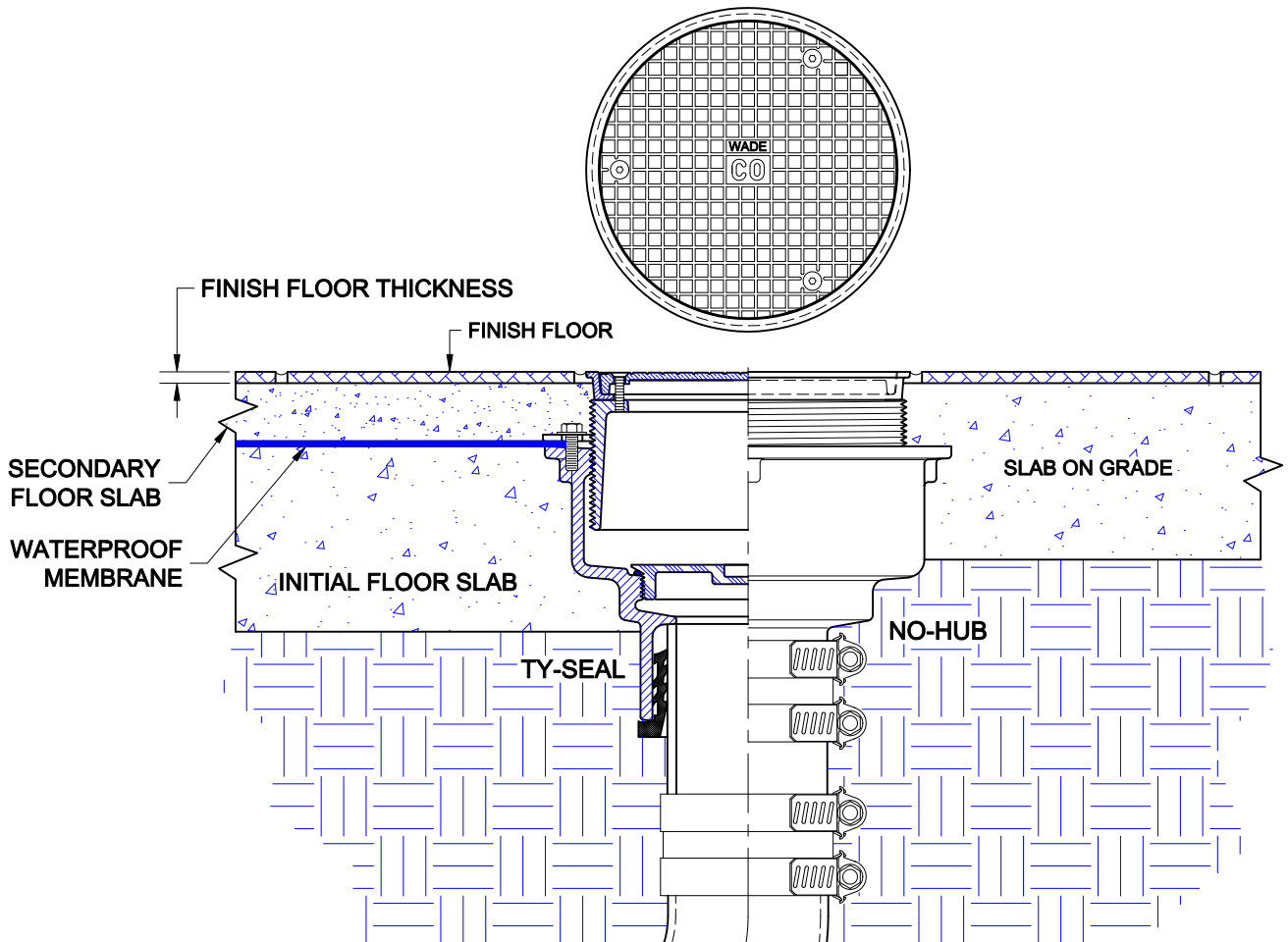


Approval Date
Customer Approval
Job Location
Job Name

Wade Division / Tyler Pipe Assumes No Responsibility For Superseded or Voided Data
Wade Division / Tyler Pipe Assumes No Responsibility For Superseded or Voided Data
are Subject to Manufacturers Tolerance and Change Without Notice.
Dimensional Data (Inches/mm)

8000-STD

CAST IRON ADJUSTABLE FLOOR CLEANOUT WITH SATIN FINISH NICKEL BRONZE TOP ASSEMBLY, CAST IRON THREADED HOUSING, THREAD PROTECTOR, VANDAL PROOF SECURED COVER AND BOTTOM OUTLET. INSTALLATION INSTRUCTIONS



The Wade 8000-STD adjustable floor cleanout is for most floor constructions. The drain piping is first run to an elevation below the expected finish floor level. The body (ferrule) is secured to the pipe with one of two connections; No-Hub or Push-On Ty-Seal. The type of connection must be specified upon ordering most Wade cleanouts. If the Ty-Seal connection is specified, apply Tyler Ty-Seal lubricant to the inside surfaces of the gasket and then firmly push the cleanout ferrule onto the pipe until it contacts the pipe stop in the body. No-Hub outlets should be installed with Tyler or Anaco/Husky couplings and secured with a torque wrench to the manufacturers recommendations.

For two pour waterproof floor construction, the 8000-STD must be ordered with an optional (-26) Clamp Device. Once the ferrule is connected to the pipe, the initial concrete sub-floor is poured to an elevation level with the flange of the ferrule. The waterproofing membrane is applied to the the sub-floor surface, covering the ferrule flange and up to the perimeter of the body. The clamp device is secured with four screws, sandwiching the membrane between the clamp and the ferrule flange. The threaded housing screws into the ferrule and is adjusted up or down to the desired level.

For slab on grade construction, install the top assembly into ferrule, adjust to the desired dimension and pour concrete up to and around the perimeter of the top. If a finish floor material is to be used, the top should extend above the structural slab the dimension of the finished floor thickness.

The adjustable top assembly threads up or down to the desired dimension. The cleanout top should be at the finish floor level or slightly below. Note that the top assembly should be above the structural slab to accommodate the finish floor material. Care must be taken to protect the top during installation. A plastic cover is provided and should remain in place until after the installation of the finish floor is complete. If the plastic protector is lost, use either cardboard, tape or other protective materials.