

SINK CARRIER



Approval Date

Customer Approval

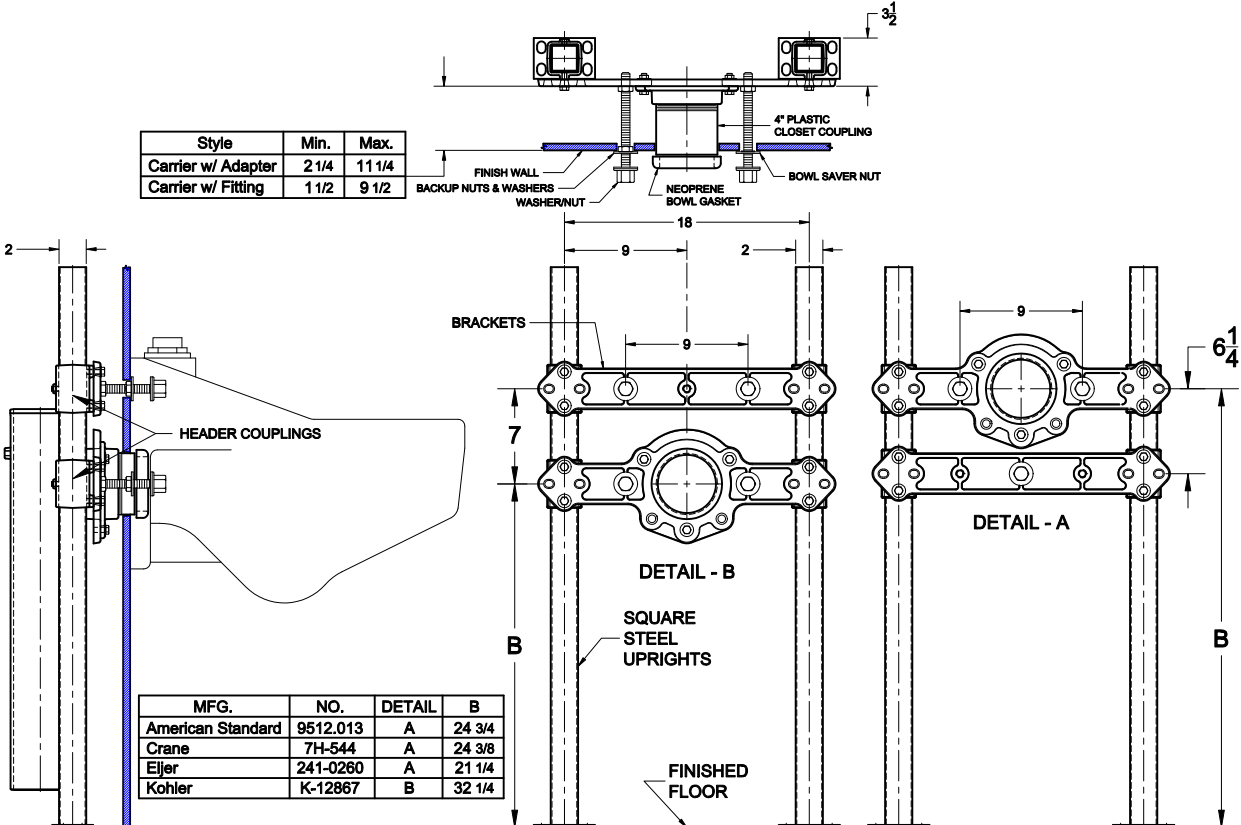
Job Location

Job Name

Wade Division / Tyler Pipe Assumes No Responsibility For Superseded or Voided Data

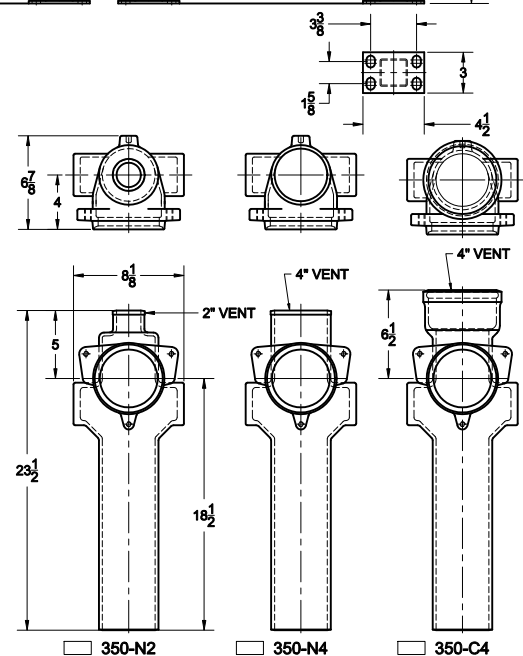
640

CLINICAL SERVICE SINK CARRIER WITH STEEL UPRIGHTS, CLOSET COUPLING, SUPPORT HARDWARE, NEOPRENE BOWL GASKET & FINISH TRIM.



INSTALLATION

1. SLIDE HEADER COUPLINGS OVER UPRIGHTS AND POSITION BRACKETS IN THE REQUIRED CONFIGURATION (DETAIL A OR B)
2. SECURE BRACKETS TO HEADER COUPLINGS WITH THE HARDWARE PROVIDED.
3. POSITION THE CARRIER TO THE REQUIRED LOCATION AND SECURELY ANCHOR TO THE FLOOR WITH 1/2" WEDGE ANCHORS (ANCHORS NOT INCLUDED)
4. LOCATE BRACKETS TO THE SPECIFIED DIMENSIONS FROM THE FINISHED FLOOR, THEN TIGHTEN THE HEADER COUPLING SET SCREWS.
5. THE 350 WASTE/VENT FITTING MAY NOW BE SECURED TO THE BRACKETS WITH THE HARDWARE PROVIDED. CONNECT PIPING.
6. INSTALL THE THREADED RODS, JAM NUTS AND 4" PLASTIC CLOSET COUPLING.
7. THE FINISH TRIM WILL BE USED AFTER THE FINISH WALLS ARE CONSTRUCTED AND THE SINK IS READY FOR INSTALLATION



AutoCad.dwg