

ADJUSTABLE FLOOR CLEANOUT

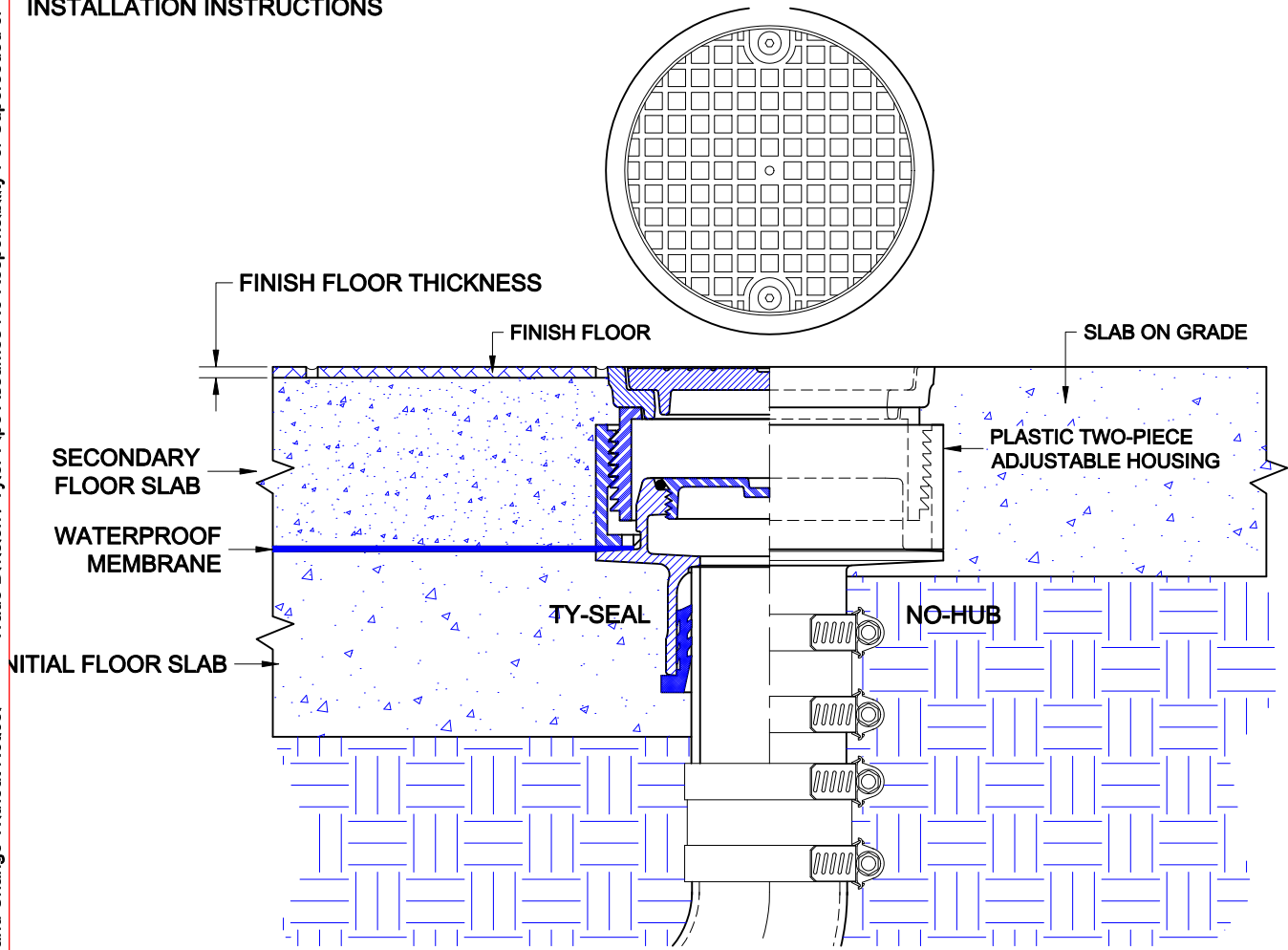


Approval Date
Customer Approval
Job Location
Job Name

6000-Z

CAST IRON ADJUSTABLE FLOOR CLEANOUT WITH DUCTILE IRON TOP ASSEMBLY, TWO PIECE PLASTIC HOUSINGS, HEAVY DUTY VANDAL PROOF SECURED TRACTOR STYLE COVER AND BOTTOM OUTLET.
INSTALLATION INSTRUCTIONS

Wade Division / Tyler Pipe Assumes No Responsibility For Superseded or Voided Data
Dimensional Data (Inches/mm) are Subject to Manufacturers Tolerance and Change Without Notice.



The Wade 6000-Z adjustable floor cleanout is for various floor construction methods - it is ideally suited for smooth finished stained concrete floors or for exterior applications where vehicular traffic is anticipated. The drain piping is first run to an elevation below the expected finish floor level. The body (ferrule) is secured to the pipe with with any of three connections; No-Hub, Inside Caulk, or Push-On Ty-Seal. The type of connection must be specified upon ordering most Wade cleanouts. If the Ty-Seal connection is specified, apply Tyler Ty-Seal lubricant to the inside surfaces of the gasket and then firmly push the cleanout ferrule onto the pipe until it contacts the pipe stop in the body. No-Hub outlets should be installed with Tyler or Anaco/Husky couplings and secured with a torque wrench to the manufacturers recommendations. Inside Caulk connections should follow standard industry practices.

Once the ferrule is connected to the pipe, the initial concrete sub-floor is poured to an elevation level with the flange of the ferrule. The waterproofing membrane is applied to the the sub-floor surface, covering the ferrule flange and up to the perimeter of the body. The top assembly is aligned over the ferrule - make sure the plastic tabs match the beveled areas on the ferrule. Firmly push the top down until it contacts the membrane at the ferrule flange.

For slab on grade construction, install the top assembly onto the ferrule, adjust to the desired level and pour concrete up to and around the perimeter of the top. If a finish floor material is to be used, the top should extend abof the structural slab the dimension of the finished floor thickness.

The adjustable top assembly threads up or down to the desired dimension. The cleanout top should be at the finish floor level or slightly below. Note that the top assembly should be above the structural slab to accomodate the finish floor material.

AutoCad.dwg

ADJUSTABLE FLOOR CLEANOUT



Approval Date

Customer Approval

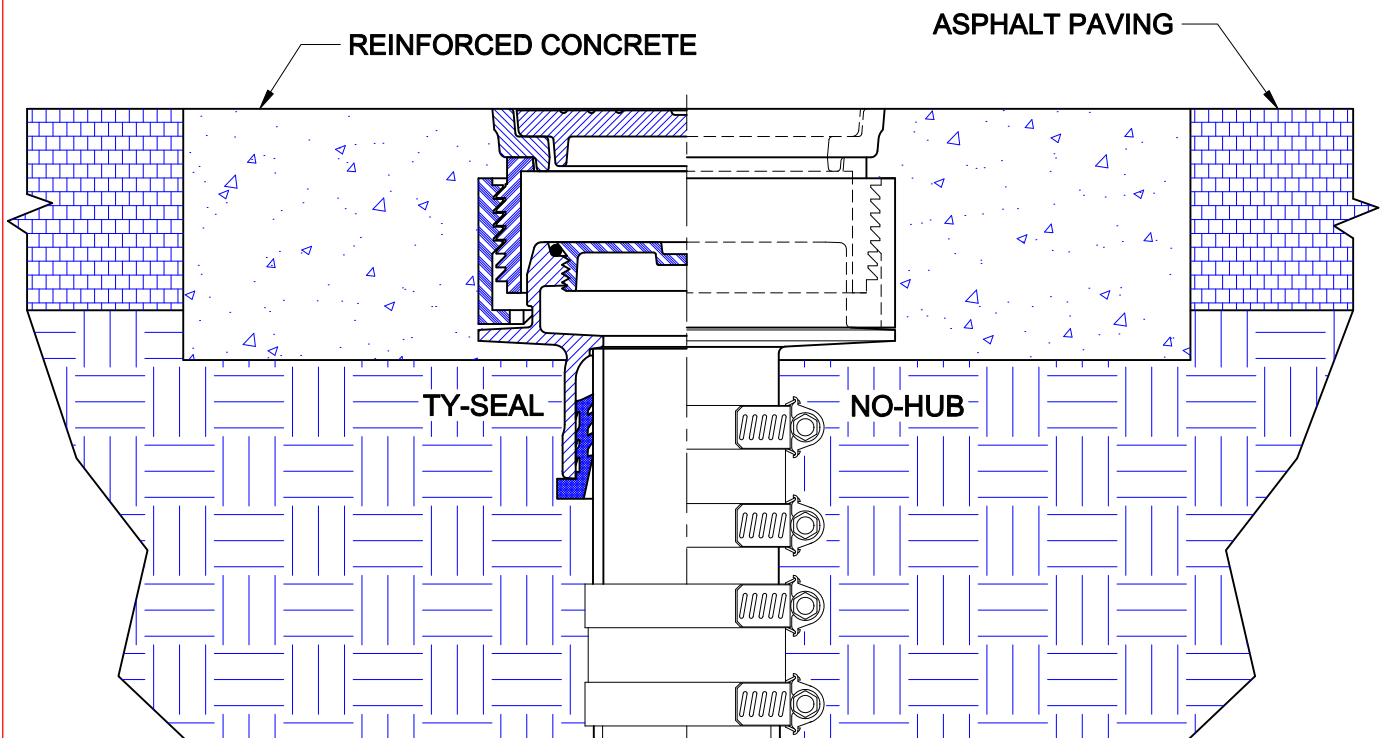
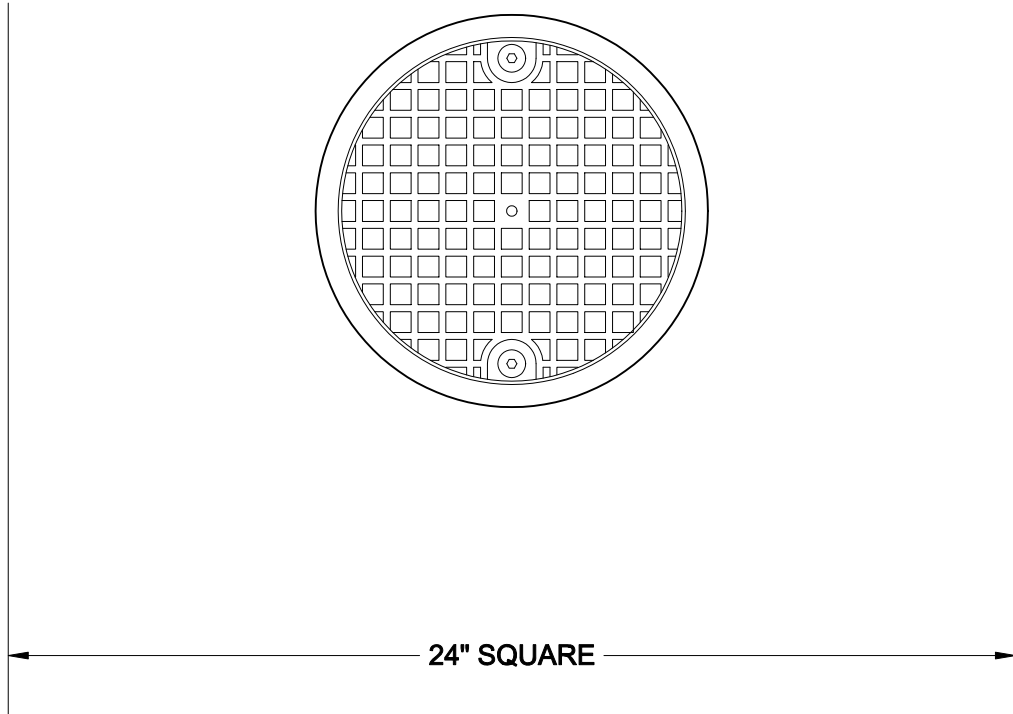
Job Location

Job Name

Wade Division / Tyler Pipe Assumes No Responsibility For Superseded or Voided Data

6000-Z

CAST IRON ADJUSTABLE FLOOR CLEANOUT WITH DUCTILE IRON TOP ASSEMBLY, TWO PIECE PLASTIC HOUSINGS, HEAVY DUTY VANDAL PROOF SECURED TRACTOR STYLE COVER AND BOTTOM OUTLET.



INSTALLATION IN PAVED PARKING AREAS

If the cleanout is to be installed in paved areas subject to vehicular traffic, provision must be made for adequate support. Wade recommends the cleanout be installed into a re-inforced concrete pad of sufficient thickness for the anticipated wheel load. The pad must extend from the center of the cleanout a minimum of 12". This method is to keep weight from transferring to the connected piping.

AutoCad.dwg