

ADJUSTABLE FLOOR CLEANOUT

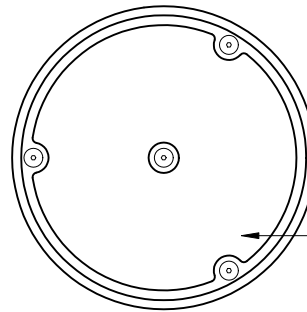


Approval Date
Customer Approval
Job Location
Job Name

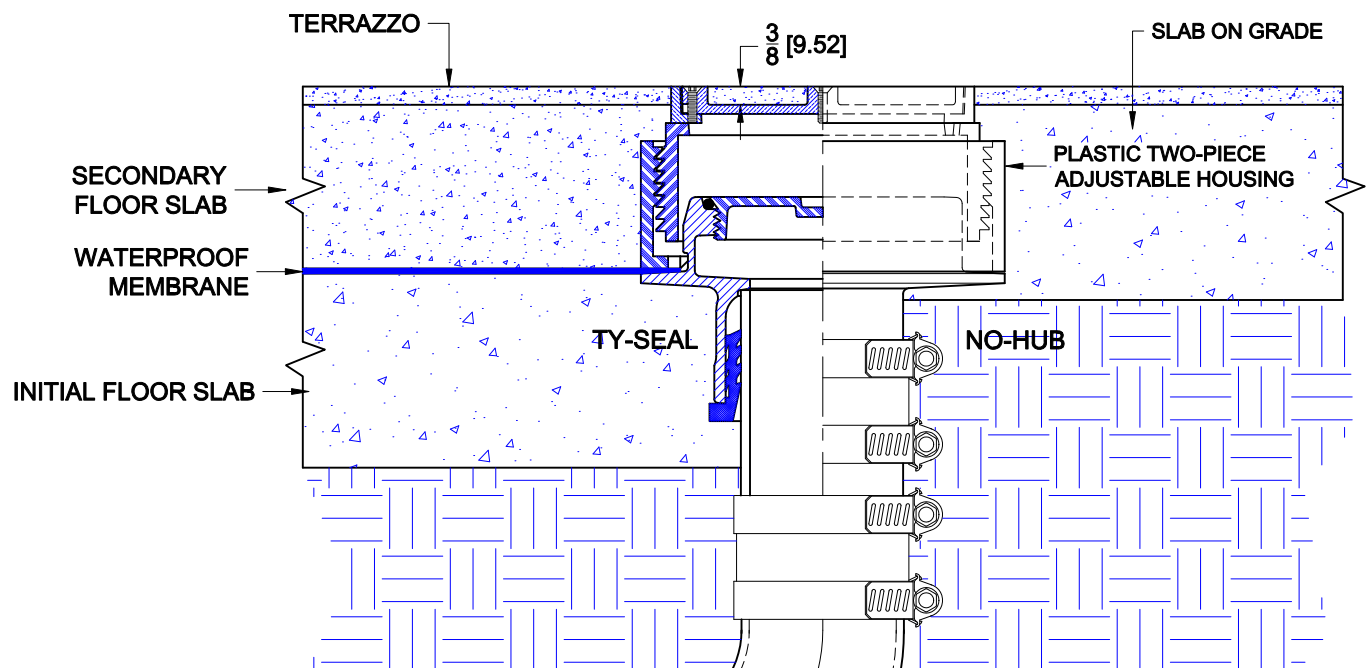
6000-U

CAST IRON ADJUSTABLE FLOOR CLEANOUT WITH SATIN FINISH NICKEL BRONZE TOP ASSEMBLY, PLASTIC HOUSINGS, VANDAL PROOF SECURED COVER RECESSED FOR TERRAZZO AND BOTTOM OUTLET.
INSTALLATION INSTRUCTIONS

Wade Division / Tyler Pipe Assumes No Responsibility For Superseded or Voided Data
are Subject to Manufacturers Tolerance and Change Without Notice.



RECESS FOR TERRAZZO



The Wade 6000-U adjustable floor cleanout is for areas utilizing terrazzo floor materials. The drain piping is first run to an elevation below the expected finish floor level. The body (ferrule) is secured to the pipe with with any of three connections; No-Hub, Inside Caulk, or Push-On Ty-Seal. The type of connection must be specified upon ordering most Wade cleanouts. If the Ty-Seal connection is specified, apply Tyler Ty-Seal lubricant to the inside surfaces of the gasket and then firmly push the cleanout ferrule onto the pipe until it contacts the pipe stop in the body. No-Hub outlets should be installed with Tyler or Anaco/Husky couplings and secured with a torque wrench to the manufacturers recommendations. Inside Caulk connections should follow standard industry practices.

Once the ferrule is connected to the pipe, the initial concrete sub-floor is poured to an elevation level with the flange of the ferrule. The waterproofing membrane is applied to the the sub-floor surface, covering the ferrule flange and up to the perimeter of the body. The top assembly is aligned over the ferrule - make sure the plastic tabs match the beveled areas on the ferrule. Firmly push the top down until it contacts the membrane at the ferrule flange. Before the second pour, the adjustable top assembly threads up or down to the desired dimension. The cleanout top should be level and extend above the structural slab the dimension of the terrazzo pour to allow for flush with the top installation.

For slab on grade construction, install the top assembly onto the ferrule, adjust to the desired level and pour concrete up to and around the perimeter of the top assembly. Top must extend above slab for terrazzo installation.

Terrazzo is poured over the concrete slab up to and around the perimeter of the top assembly. Terrazzo is also poured into the recess in the cover. The brass frame and cover is malleable and provides an excellent appearance after the terrazzo finishing.

AutoCad.dwg