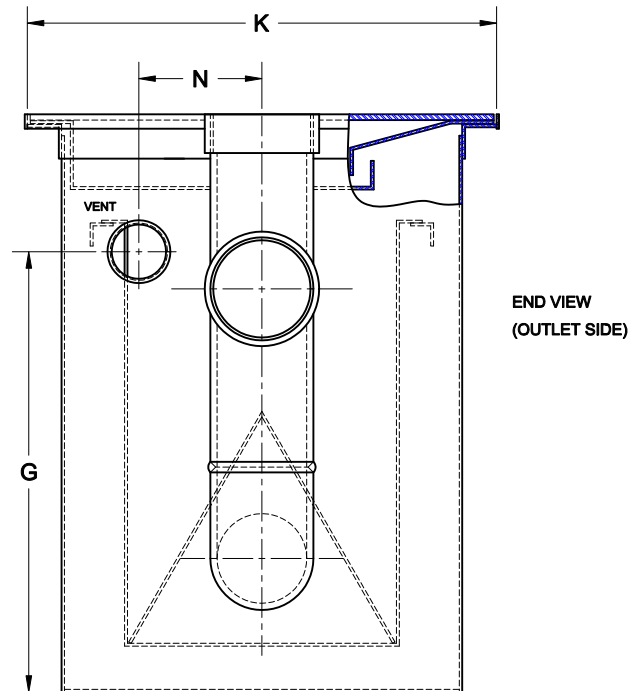
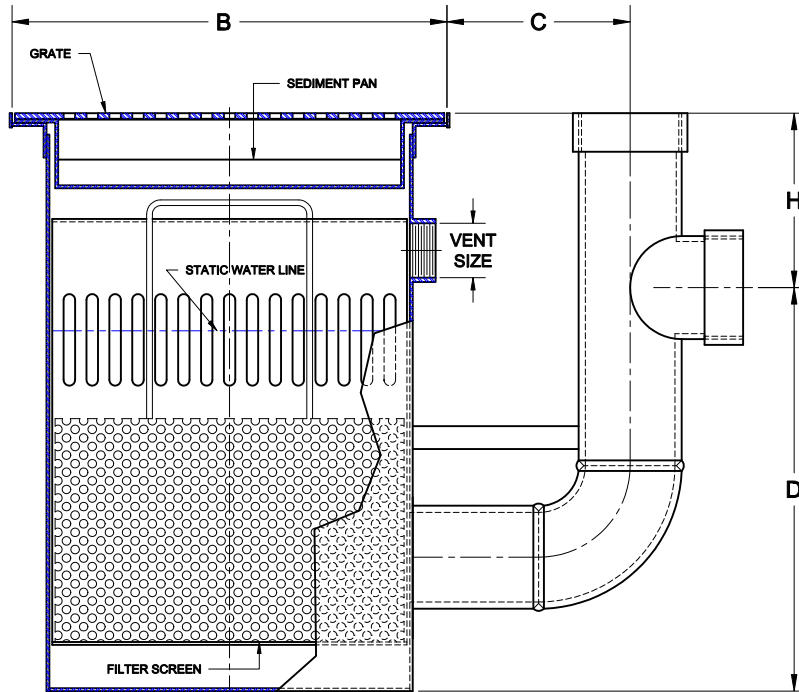


# SEDIMENT / OIL INTERCEPTOR



5800

FAB. STEEL SEDIMENT/OIL INTERCEPTOR WITH THREADED OUTLET, DBLE WALL TRAP, PERFORATED FILTER SCREEN, HEAVY DUTY COVER, SEDIMENT PAN AND ACID RESISTANT COATING INSIDE & OUTSIDE.



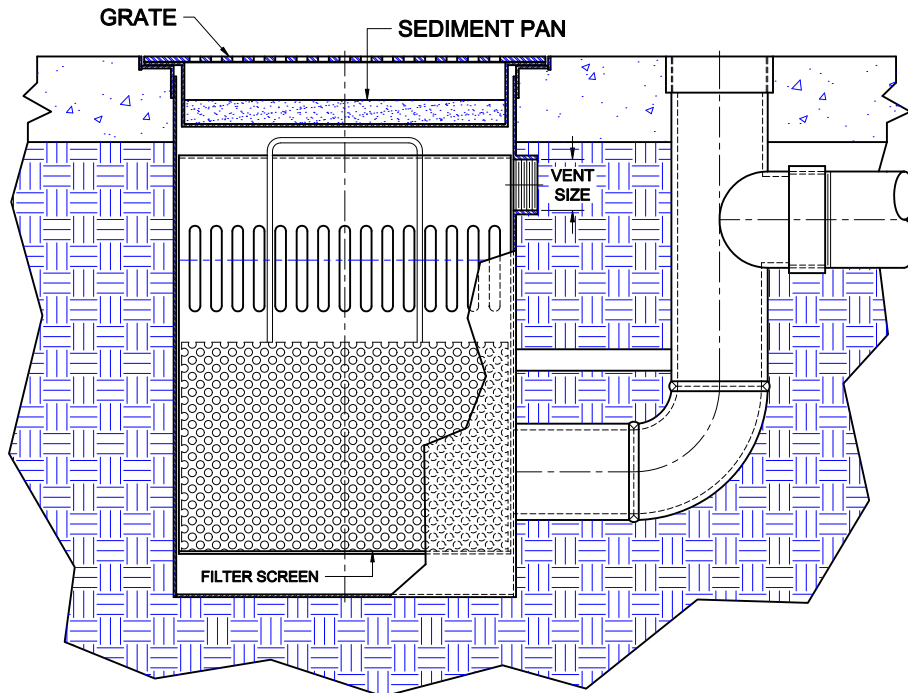
MODEL	PIPE SIZE	VENT SIZE	GREASY SLUDGE (LB)	LIQUID HOLDING (GAL)	H (MIN)	B	C	D	G	K	VENT N	GRATE FREE AREA	QTY OF SEDIMENT PANS	QTY OF GRATES
5800-12	2	—	12	3.5	4 1/2	10	4	10 1/2	—	12	—	16	1	1
5800-77	4	2	77	22	7 5/8	19	8	17 5/8	19 1/4	20 1/2	5 3/8	22	1	1
5800-105	4	2	105	30	10	19	8	23	27	20 1/2	4 1/8	22	1	1
5800-193	4	2	193	55	10	22 1/2	8	22	26	30	9 5/8	32	1	1
5800-350	4	2	350	100	10	30	8	22	26	44 5/8	10 3/8	64	2	2
5800-438	6	3	438	125	11	22 1/2	12	27	30	60 1/2	18 7/8	64	2	2

AutoCad.dwg

5800

INSTALLATION, OPERATION & MAINTENANCE

FILTER SCREEN, HEAVY DUTY COVER, SEDIMENT PAN AND ACID RESISTANT COATING INSIDE & OUTSIDE.



## INSTALLATION

The Wade 5800 Oil & Sediment Interceptor functions as a large capacity floor drain. Excavate the area where the drain is to be installed. Level the unit to the anticipated finished floor level. Connect the piping with the proper slope to the sanitary drainage system and backfill. Concrete is poured to the top of the drain and sloped toward the drain. Install a cleanout plug into the threaded opening.

## SIZING

The sizing of this interceptor is generally based upon the expected amount of sediment and solid waste to be retained. Secondly, sizing will determine the frequency for which cleaning is required. Larger units will handle greater volumes of waste between cleanings. All units are made with a standard pipe size outlet and are capable of handling drainage volumes to their respective pipe size.

## DESIGN

The Wade 5800 Oil and Sediment Interceptor is designed for garage and industrial drainage applications to retain mud, sand, sediment, greasy sludge or any other solids entering the drain in addition to any oil/grease laden waste material. This is accomplished through the principle of gravity and flotation separation. The sediment pan retains greasy sludge and solids. The removable bucket/weir will also retain solids and act to stop water turbulence so oil and grease can separate from the water and be retained in the main chamber.

## OPERATION

The waste water flows through the grate into the sediment pan, then down into the removable bucket exiting through the weir into the main separating chamber, down through the secondary screen element and into the sanitary drainage system.

## MAINTENANCE

Cleaning should be done on a regular basis, either before or after the sediment pan passageway becomes clogged. Remove the grate to gain access to the perforated screen element. Lift the element out by the handle. Remove the bucket. Skim oil/grease from the top of water or completely pump the content out. After cleaning all the sediment and solids, dispose of properly. Rinse all components and reinstall into the interceptor body. Efficiency of operation is directly related to the level of maintenance.