

HAIR INTERCEPTOR



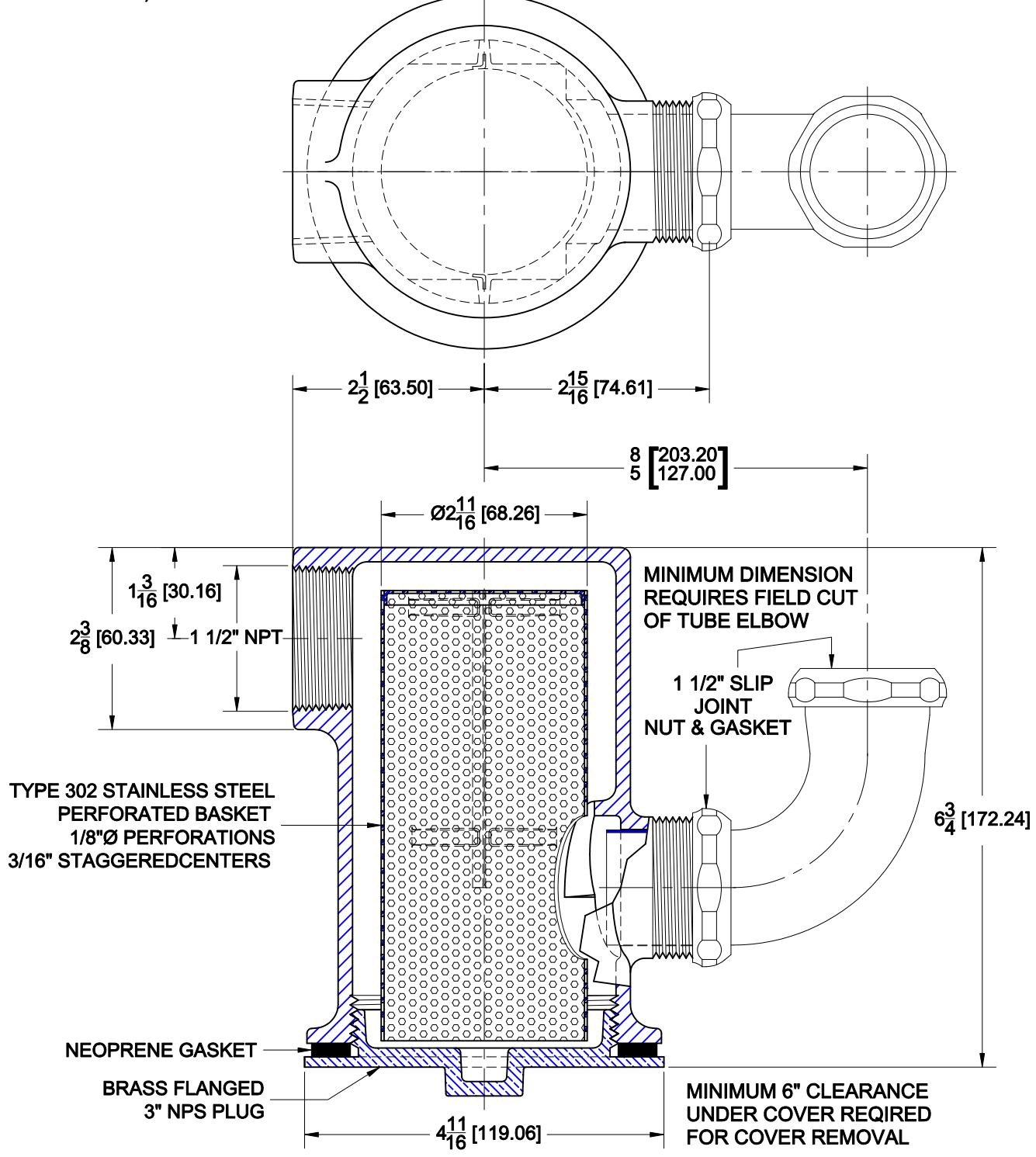
Approval Date
Customer Approval
Job Location
Job Name

5750

PAINTED CAST IRON HAIR INTERCEPTOR WITH 1-1/2" THREADED SIDE OUTLET, BRASS CHROME PLATED TUBE ELBOW W/ 1-1/2" SLIP JOINT CONNECTION, BRASS FLANGED PLUG AND S/S PERFORATED BASKET.

Wade Division / Tyler Pipe Assumes No Responsibility For Superseded or Voided Data

Dimensional Data (Inches/mm) are Subject to Manufacturers Tolerance and Change Without Notice.



OPTIONS

Suffix	Description
43	SATIN FINISH NICKEL BRONZE BODY
102	POLISHED CHROME PLATED FINISH

AutoCad.dwg

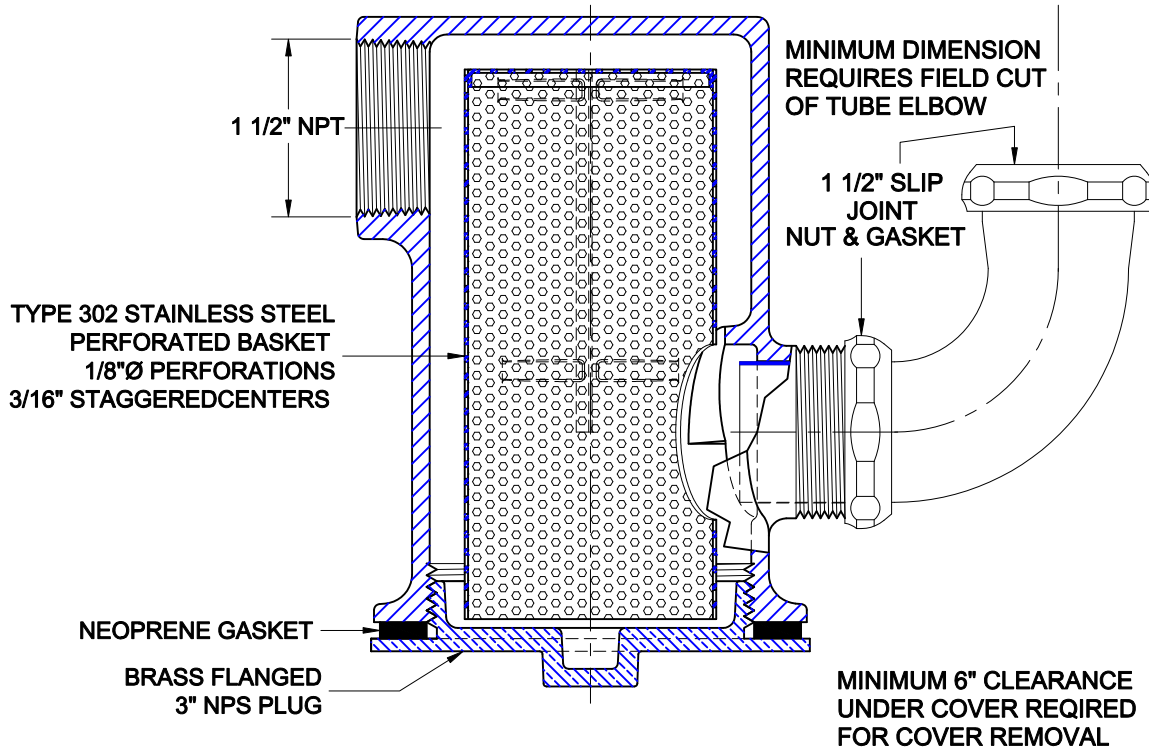
HAIR INTERCEPTOR



Approval Date
Customer Approval
Job Location
Job Name
Dimensional Data (Inches/mm) are Subject to Manufacturers Tolerance and Change Without Notice.
Wade Division / Tyler Pipe Assumes No Responsibility For Superseded or Voided Data

5750

INSTALLATION AND OPERATION



SIZING

There are no sizing requirements for this interceptor. This unit is designed with 1-1/2" inlet and outlet and is capable of handling the drainage volumes for 1-1/2" pipe size.

DESIGN

The Wade 5750 interceptor is designed to retain hair from beauty salons, barber shops, hospitals or wherever hair clogging is a potential problem. The removable perforated stainless steel basket retains the accumulating hair before it can pass through the sanitary sewer system.

OPERATION

The waste water from the fixture flows from the inlet piping into the perforated basket, into the main body chamber, then exits the chamber into the sanitary sewer drain system. The interceptor replaces the fixture p-trap.

MAINTENANCE

Cleaning should be done on a periodic basis before the basket becomes clogged. Place a container under the brass cleanout plug and loosen until water seeps and the unit is completely drained. Remove the basket and clean the accumulated hair. The basket should be rinsed with clean warm water to clear soap scum from the perforations. Re-install the basket and tighten the brass plug. Efficiency of operation is directly related to the level of maintenance.

HAIR INTERCEPTOR



Approval Date

5750

INSTALLATION AND OPERATION

Customer Approval

Wade Division / Tyler Pipe Assumes No Responsibility For Superseded or Voided Data

Job Location

Dimensional Data (Inches/mm) are Subject to Manufacturers Tolerance and Change Without Notice.

Job Name

