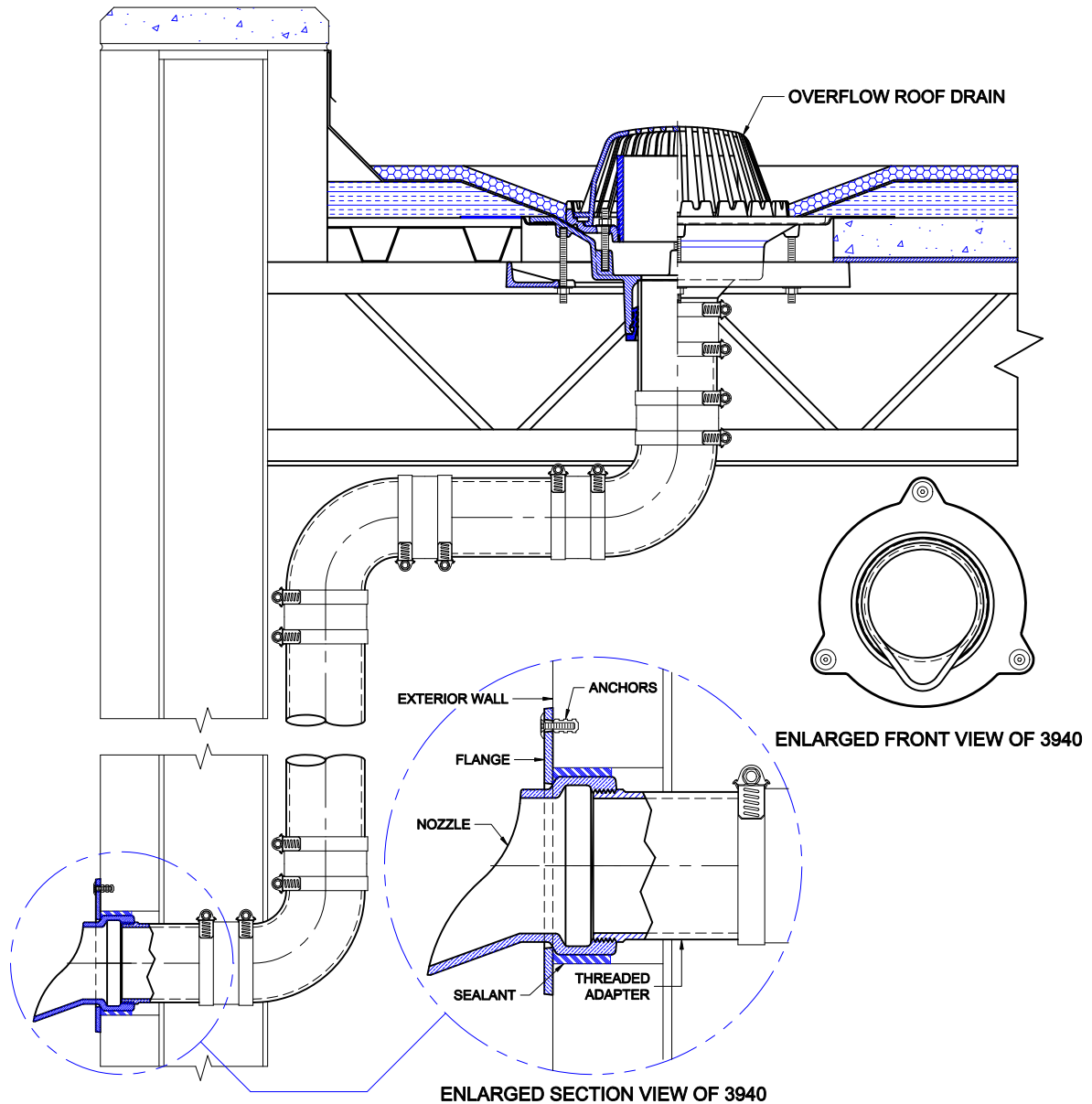


# OVERFLOW DOWNSPOUT NOZZLE



3940

CAST BRONZE OVERFLOW DOWNSPOUT NOZZLE WITH THREADED OUTLET AND FLANGE TO SECURE NOZZLE TO WALL.



## INSTALLATION

The Wade 3940 downspout nozzle is used in conjunction with overflow roof drains to convey storm water outside the building. The bronze construction provides excellent corrosion resistance as well as maintaining an attractive appearance.

1. The piping from the overflow is run to a predetermined location at a lower level in the building. The piping is connected to the nozzle with a threaded adapter through the exterior wall. The pipe must be supported to accept thrust loads and sealed at the wall opening.
2. Provide proper backing to secure the wall flange. Holes are provided for 1/4" anchors.

Job Name

Job Location

Customer Approval

Approval Date

Dimensional Data (Inches/mm) are Subject to Manufacturers Tolerance and Change Without Notice. Wade Division / Tyler Pipe Assumes No Responsibility For Superseded or Voided Data