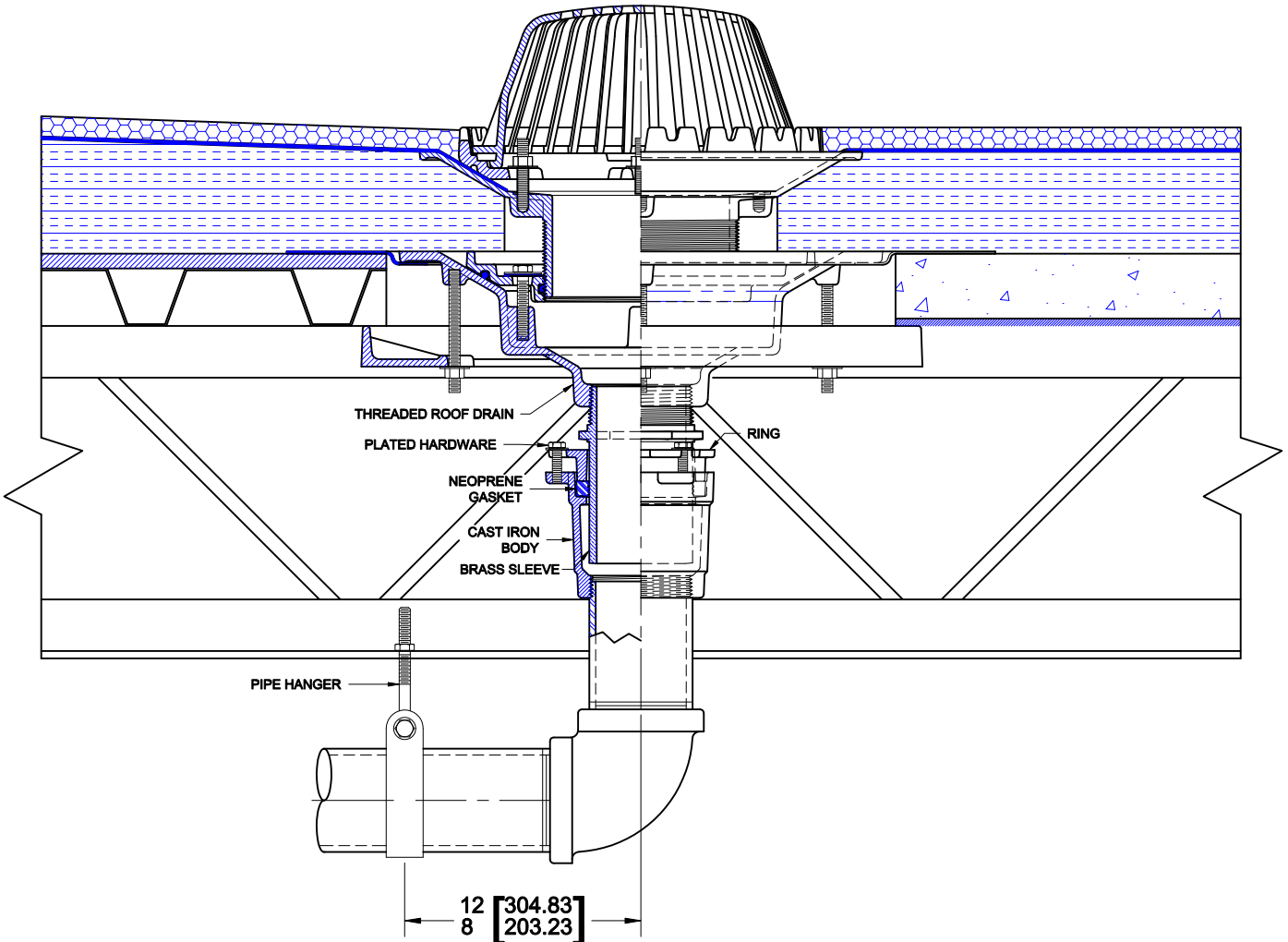


EXPANSION JOINT



3900

EXPANSION JOINT WITH CAST IRON FEMALE THREADED BODY, MALE THREADED BRASS SLEEVE, NEOPRENE GASKET AND ZINC PLATED HARDWARE.



INSTALLATION

The Wade 3900 expansion joint is used with all types of vertical drainage conductors, leaders stacks, vent or storm drainage lines where contraction and expansion movements must be compensated for to prevent damage to the building and components.

1. The Wade 3900 expansion joint is furnished fully assembled. It must be installed in a vertical position only.
2. Loosen the hex head screws to relieve compression on the gasket. Remove the brass sleeve for installation in the female threaded component such as a roof drain body. Use a thread sealant and firmly tighten the sleeve into the body. Take care not to damage the machined surface of brass sleeve.
3. To insure the expansion joint will perform properly, the sleeve must be oriented to allow full travel for expansion and contraction. Slide the sleeve into the expansion joint body to a mid position. Lubrication of the sleeve is recommended - use a light film of petroleum jelly. Tighten the screws for a unified seal.
4. Using standard industry practice, make up the pipe joints to the body.