

EXPANSION JOINT

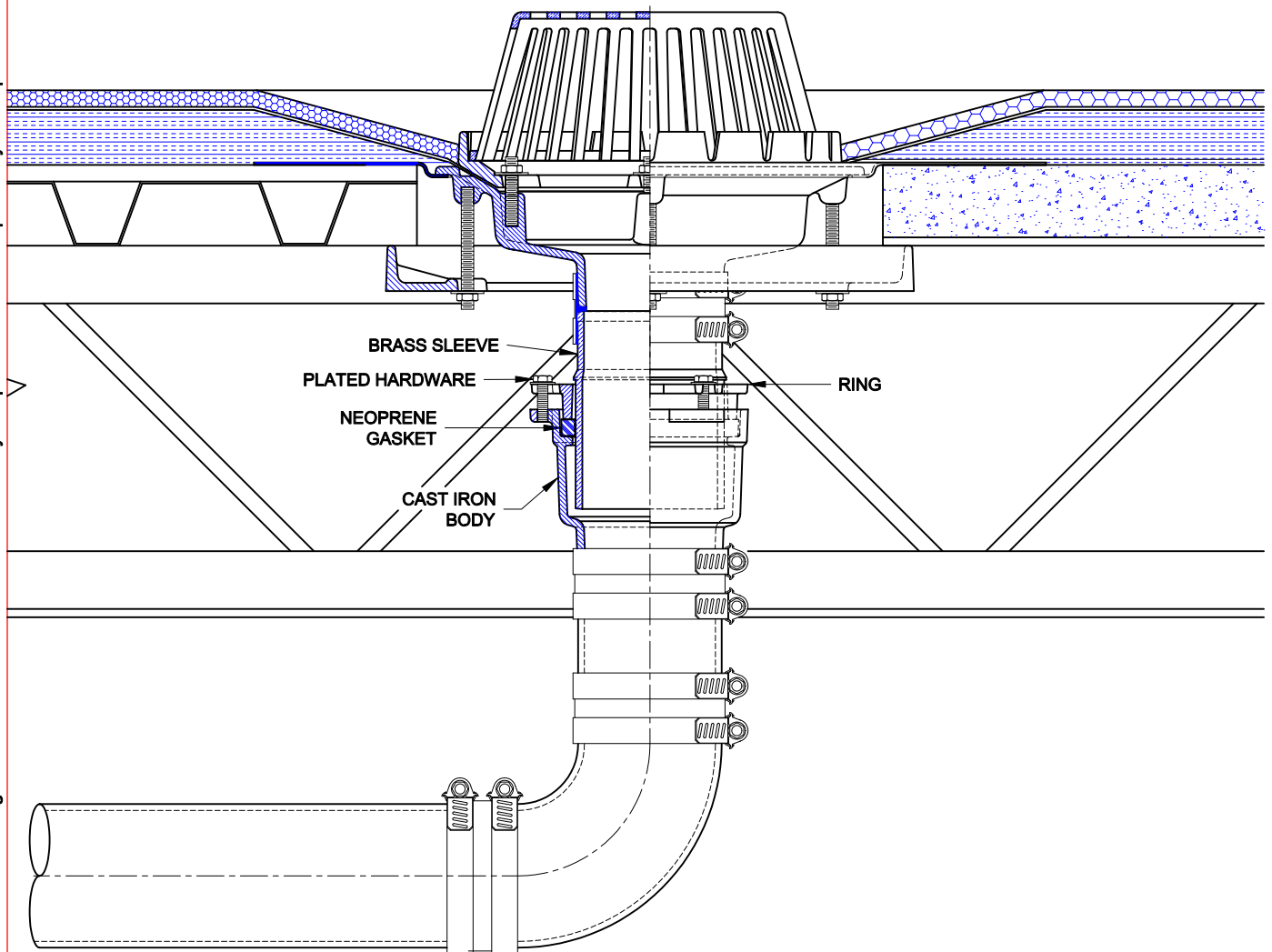


3900-NH

EXPANSION JOINT WITH CAST IRON NO-HUB BODY, NO-HUB BRONZE SLEEVE, NEOPRENE GASKET AND ZINC PLATED HARDWARE.

Approval Date
Customer Approval
Job Location
Job Name

Wade Division / Tyler Pipe Assumes No Responsibility For Superseded or Voided Data
are Subject to Manufacturers Tolerance and Change Without Notice.



INSTALLATION

The Wade 3900-NH expansion joint is used with all types of vertical drainage conductors, leaders, stacks, vent or storm drainage lines where contraction and expansion movements must be compensated for to prevent damage to the building and components.

1. The Wade 3900-NH expansion joint is furnished fully assembled. It must be installed in a vertical position only.
2. Loosen the hex head screws to relieve compression on the gasket. Connect the component such as a roof drain body with a Tyler or Anaco / Husky No-Hub coupling. Use a torque wrench and firmly tighten the No-Hub bands to the recommended torque. Take care not to damage the machined surface of brass sleeve.
3. To insure the expansion joint will perform properly, the sleeve must be oriented to allow full travel for expansion and contraction. Slide the sleeve in the expansion joint body to a mid position. Lubrication of the sleeve is recommended - use a light film of petroleum jelly. Tighten the screws for a unified seal.
4. Using standard industry practice, make up the pipe joints to the body.