

OVERFLOW DOWNSPOUT COVER



3880-SS

STAINLESS STEEL OVERFLOW DOWNSPOUT COVER WITH FLANGE, HINGED COVER AND VANDAL PROOF SCREWS. FLUSH MOUNT OR SURFACE MOUNT.

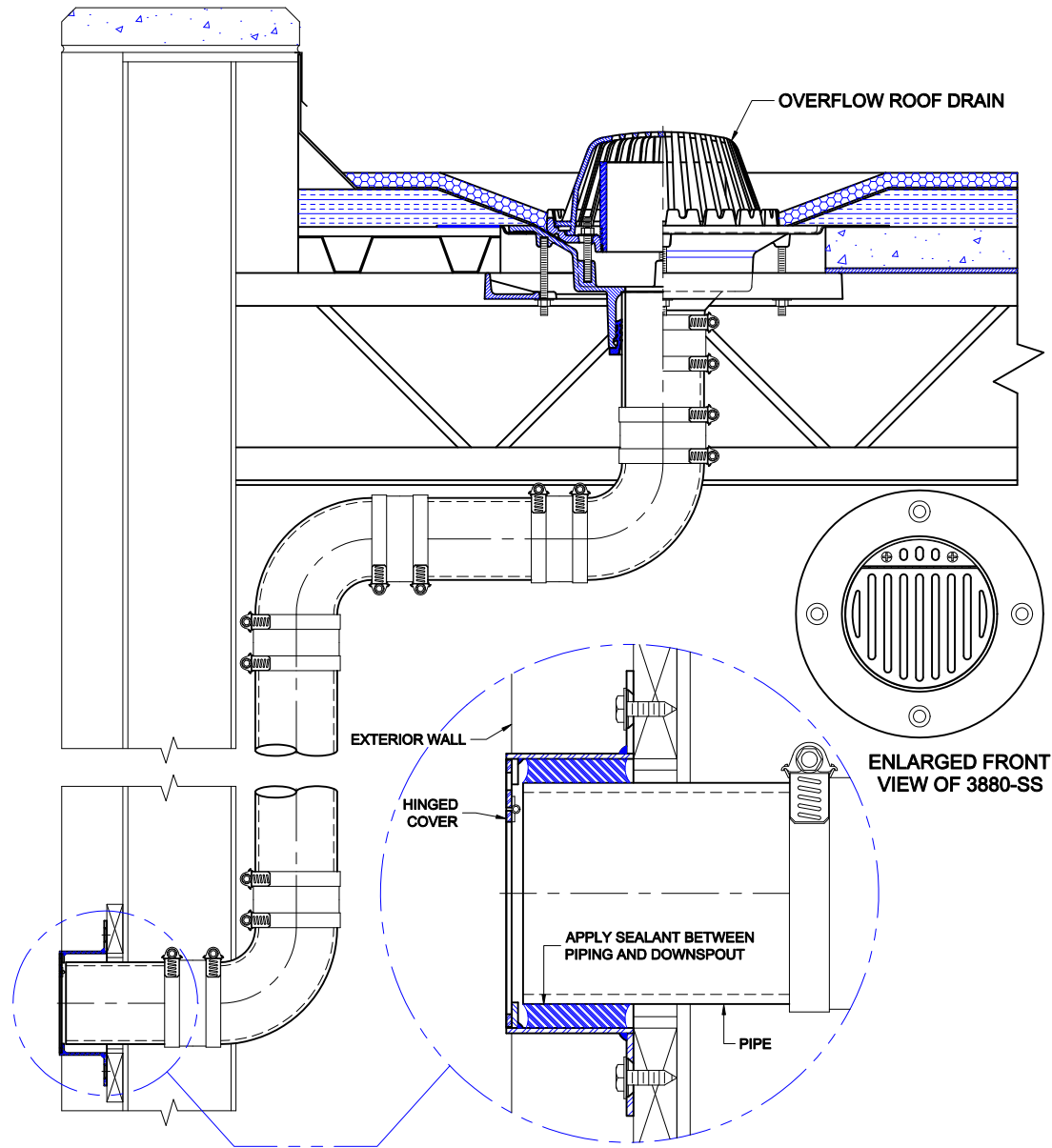
Approval Date

Customer Approval

Job Location

Job Name

Wade Division / Tyler Pipe Assumes No Responsibility For Superseded or Voided Data
are Subject to Manufacturers Tolerance and Change Without Notice.



INSTALLATION

The Wade 3880-SS is used in conjunction with overflow roof drains to convey storm water outside the building. The stainless steel construction provides excellent corrosion resistance as well as maintaining an attractive appearance.

1. The piping from the overflow is run to a predetermined location at a lower level in the building. The piping terminates outside the building through a wall. The pipe must be supported to accept thrust loads and sealed at the wall opening.
2. The installation method must be determined. The 3880-SS may be installed flush with the outside wall or it can be surface mounted as desired. Provide proper backing to secure the wall flange. Holes are provided for 3/8" diameter screws.
3. The storm drainage pipe must install into the body of the downspout to within 1/4" of the front face. Apply a high quality sealant between the pipe and the body.