

FRESH AIR INLET



Approval Date

Customer Approval

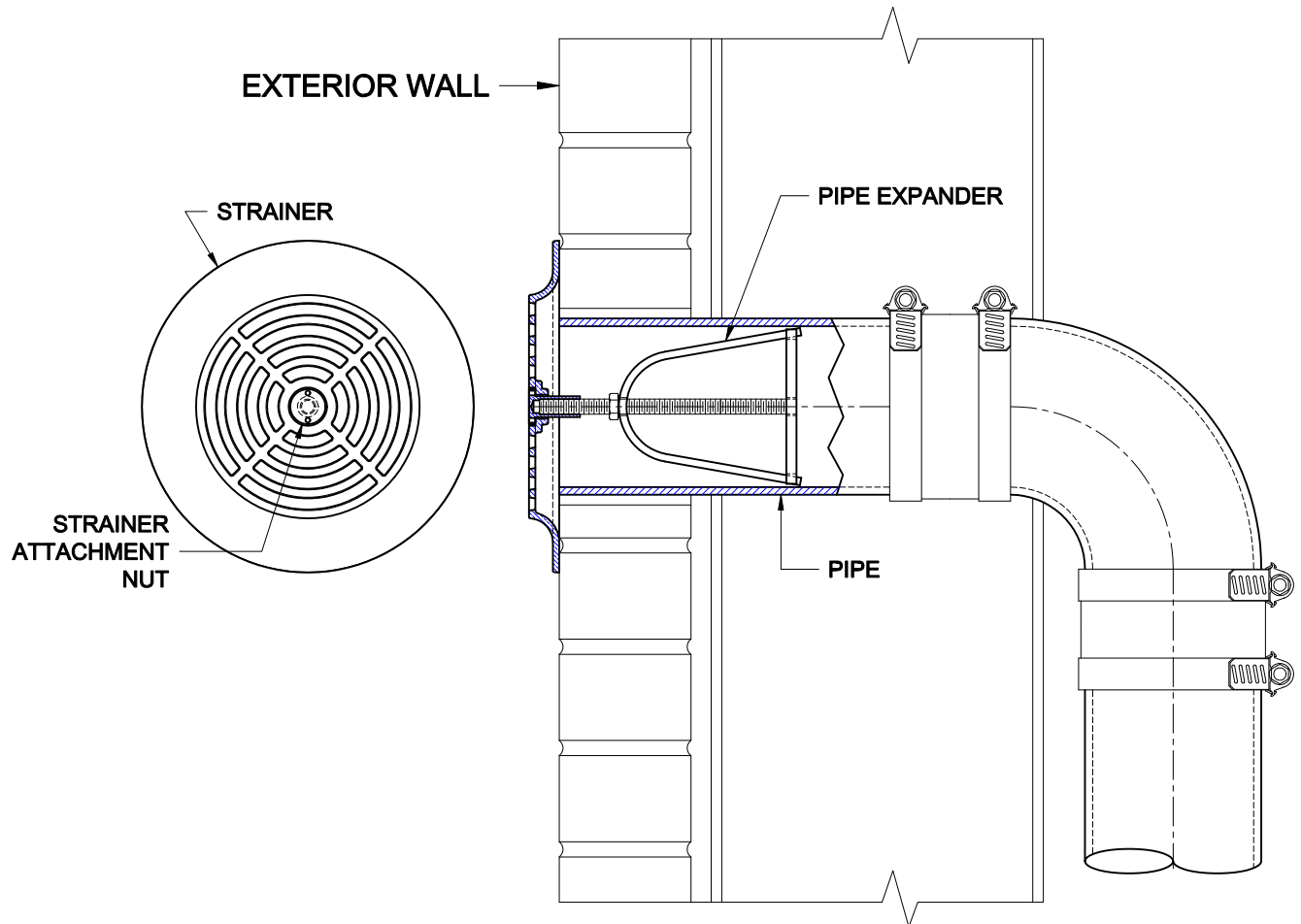
Job Location

Job Name

Wade Division / Tyler Pipe Assumes No Responsibility For Superseded or Voided Data
Tolerance and Change Without Notice.
are Subject to Manufacturers

3880-P

SURFACE MOUNT FRESH AIR INLET WITH SATIN FINISH NICKEL BRONZE STRAINER, VANDAL PROOF SPANNER STYLE SECURING NUT AND ADJUSTABLE PIPE EXPANDER.



INSTALLATION

The Wade 3880-P provides a protective cover for vent piping at an exterior wall. The strainer is designed with ample free area to allow air to enter the system.

1. The vent piping is run to a predetermined location at an accessible level in the building. The piping terminates outside the building through a wall. The pipe must be installed flush with the exterior wall and sealed at the wall opening.
2. The pipe expander is pre-assembled and ready to install. If necessary, loosen the nut to allow the adjusting bar to flex in the pipe expander legs.
3. Push the assembly into the pipe until the threaded rod is almost flush with the exterior wall or sticking out no more than 1/4". Tighten the nut until the expander legs contact the side wall of the pipe and keeping the unit as close to possible with the centerline of the pipe. The expander should be tightened until it is secure.
4. Place the strainer over the pipe, aligning the threaded rod with the center of the strainer. Tighten the attachment nut with a spanner wrench to secure the strainer in place.