

# VENT CAP



Approval Date

3690

CAST IRON VANDAL PROOF VENT CAP WITH HOODED CAP AND VANDAL PROOF SCREWS.

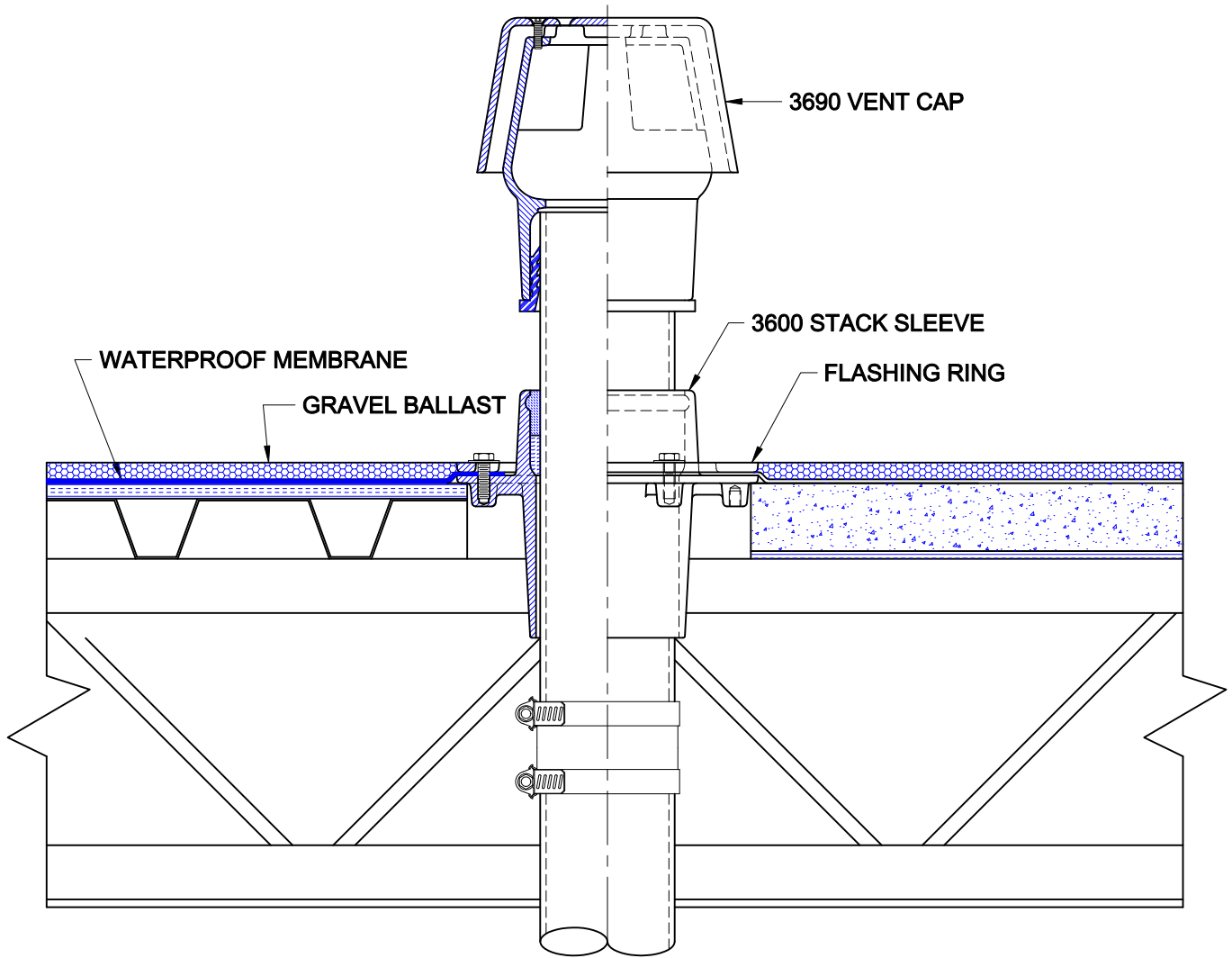
Customer Approval

Wade Division / Tyler Pipe Assumes No Responsibility For Superseded or Voided Data

Job Location

Dimensional Data ( inches/mm) are Subject to Manufacturers Tolerance and Change Without Notice.

Job Name



## INSTALLATION

The Wade 3690 Vent Cap is recommended for all plumbing vents which terminate above the roof level. The unique design eliminates the possibility of sticks, debris or other materials being either carelessly or maliciously placed in the plumbing vent openings, thus causing stoppage of the drainage system.

The 3690 is used in conjunction with 3600 or 3670-C stack sleeves. The pipe must be protruding at least 3" from the top of the stack sleeve. The pipe must be dressed to ease the installation. File or grind a slight bevel into the pipe. The 3690 vent cap is installed with a Ty-Seal push-on connection. Apply a film of Tyler Ty-Seal lubricant to the inside surfaces of the gasket and firmly push the vent cap onto the pipe until it contacts the internal pipe stop.

The Ty-Seal connection is very secure after installation. After the joint seats over a short period of time, it will require extreme force to remove. If a more secure application is desired, Tyler Lubrifast lubricant may be used. This product is very slick and makes installation easy, but after it sets up, it effectively cements the pipe in the joint.

AutoCad.dwg