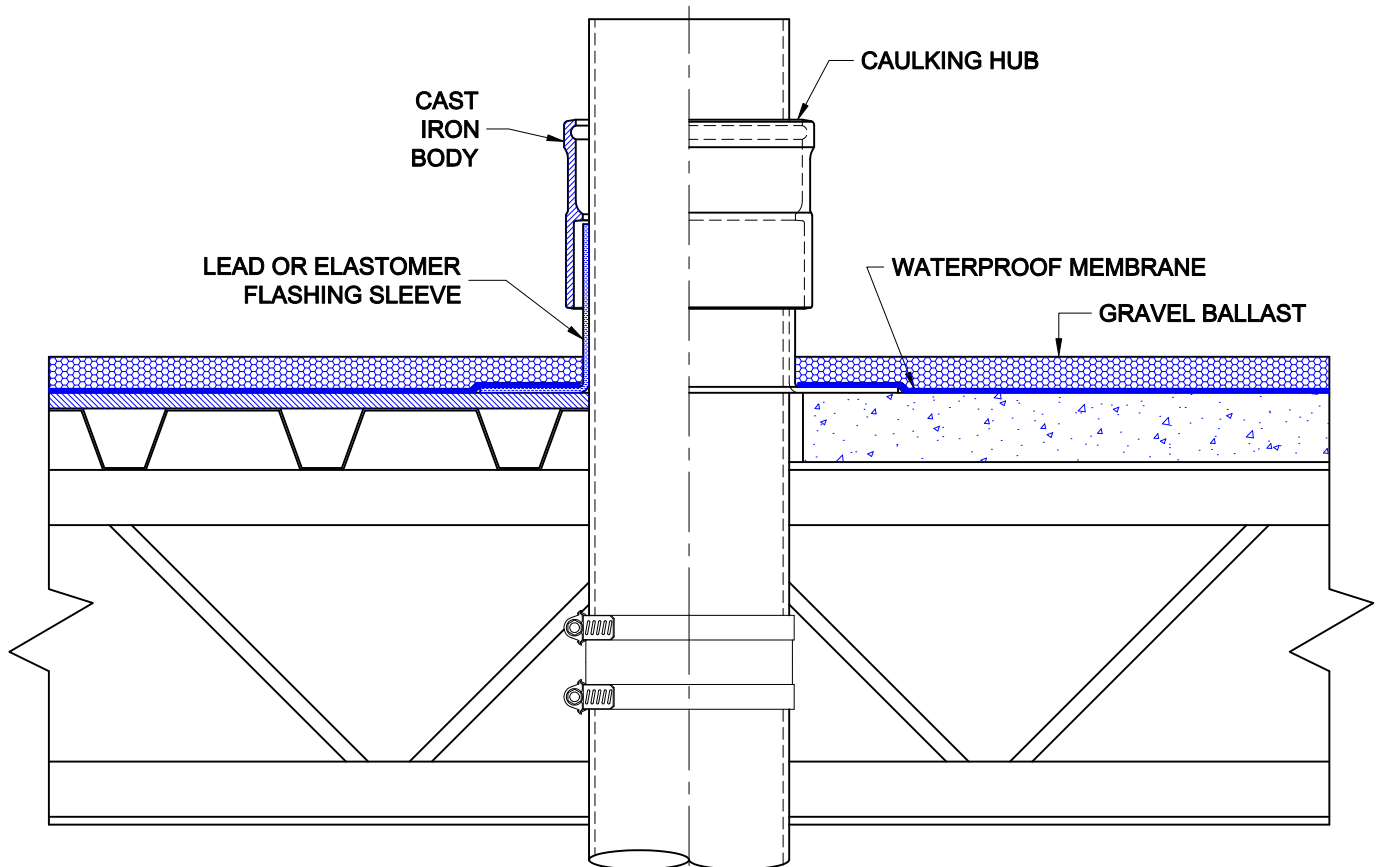


STACK SLEEVE COUPLING



Approval Date
Customer Approval
Job Location
Job Name

3670-C
CAST IRON STACK SLEEVE COUPLING WITH TOP CAULKING HUB.



INSTALLATION

The Wade 3670-C is used as a watertight sleeve for piping which passes through roof decks.

1. At the predetermined location, cut a circular opening into the deck to receive the pipe.
2. After the piping is passed through the pre-cut hole and a lead or elastomer pipe sleeve is installed around the pipe, slide the cast iron coupling over the pipe until the skirt covers the lead sleeve completely. A waterproof seal is made by caulking the joint at the top hub.
3. On the roof side, apply the waterproof membrane per manufacturers recommendations. Membrane must lay flat and cover the lead flange. Gravel ballast is applied evenly over the membrane and up to the perimeter of the lead flashing.