

PROMENADE DECK DRAIN



Approval Date

Customer Approval

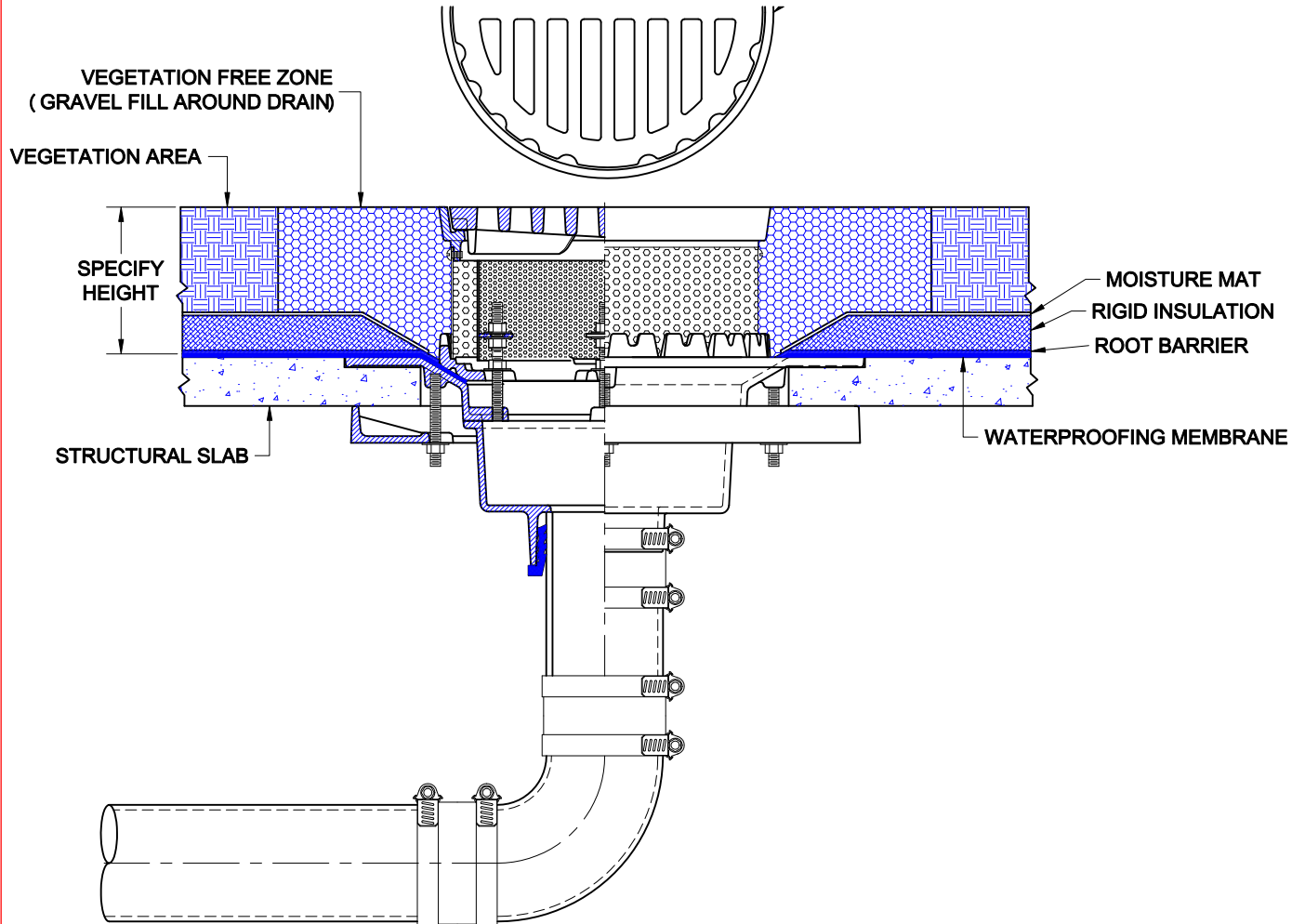
Job Location

Job Name

Wade Division / Tyler Pipe Assumes No Responsibility For Superseded or Voided Data

3300-TC

CAST IRON DECK DRAIN WITH WIDE FLANGE, FLASHING RING INTEGRAL WITH GAVEL STOP, STAINLESS STEEL PERFORATED FILTER SCREENS, DUCTILE IRON GRATE AND BOTTOM OUTLET.



INSTALLATION

The Wade 3300-TC is used for green roof deck projects. For proper installation, an optional underdeck clamp may be required.

1. At the predetermined location, place the drain so that the top surface of the wide flange is flush with the top surface of the structural slab. If the structural slab is not a pour-in-place, an underdeck clamp is recommended.
2. Installation of piping may then proceed. See page 2 for pipe installation recommendations.
3. On the roof side, apply the waterproof membrane per manufacturers recommendations. Membrane must lay flat and contour the opening. Install the flashing ring with the provided hardware, securely fastening the membrane between the body and the flashing ring.
4. The primary and secondary filter screens are preset and only require tightening. The flat grate fits into a recess in the adapter ring. If an optional nickel bronze veneer is supplied, it is installed by securing with the provided hardware.
5. If additional structures such as root barriers, rigid insulation and moisture mats are specified, these should be installed per engineers specifications. The majority of drainage occurs through the deck drain top. Perimeter drainage occurs through the gravel fill around the perimeter of the drain. Typically, this gravel fill is around 18" from the outsided perimeter of the drain.

PROMENADE DECK DRAIN



3300-TC

CAST IRON DECK DRAIN WITH WIDE FLANGE, FLASHING RING INTEGRAL WITH GRAVEL STOP, STAINLESS STEEL PERFORATED FILTER SCREENS, DUCTILE IRON GRATE AND BOTTOM OUTLET.

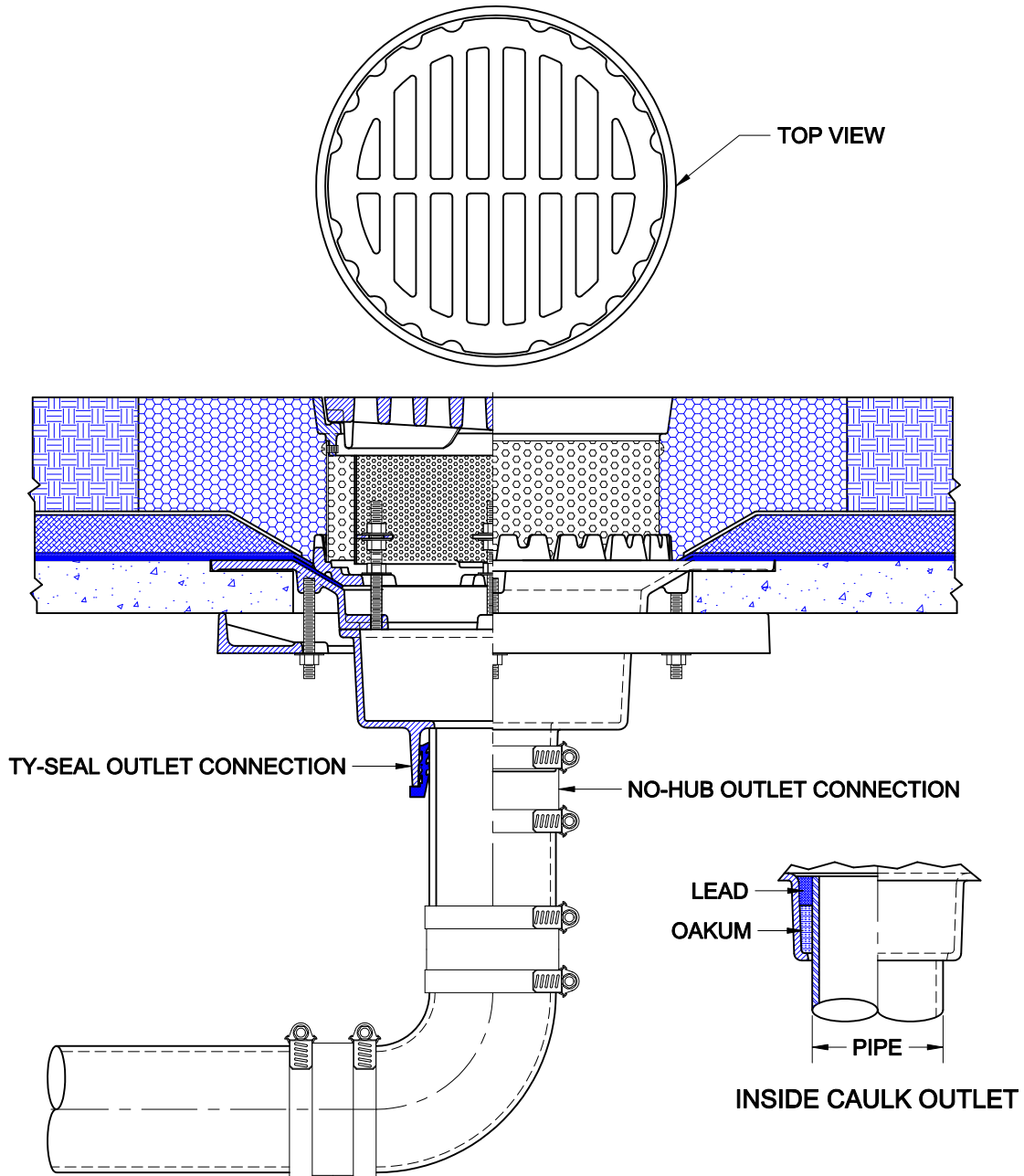
Approval Date

Customer Approval

Job Location

Job Name

Wade Division / Tyler Pipe Assumes No Responsibility For Superseded or Voided Data
are Subject to Manufacturers Tolerance and Change Without Notice.



PIPE INSTALLATION

The drain piping is first run to an elevation below the roof drain. The drain body is secured to the pipe with any of three connections; No-Hub, Inside Caulk or Push-On Ty-Seal. The type of connection must be specified upon ordering any Wade Drain. If the Ty-Seal connection is specified, apply Tyler Ty-Seal lubricant to the inside surfaces of the gasket and then firmly push the pipe into the hub until it contacts the pipe stop in the body. No-Hub outlets should be installed with Tyler or Anaco/Husky couplings and secured with a torque wrench to the manufacturers recommendations. Inside Caulk connections should follow standard industry practices. Once the body is connected to the pipe, the horizontal piping runs are sloped for gravity feed the the down pipe locations. The piping must be supported to recommended hanger spacings and insulated if required.