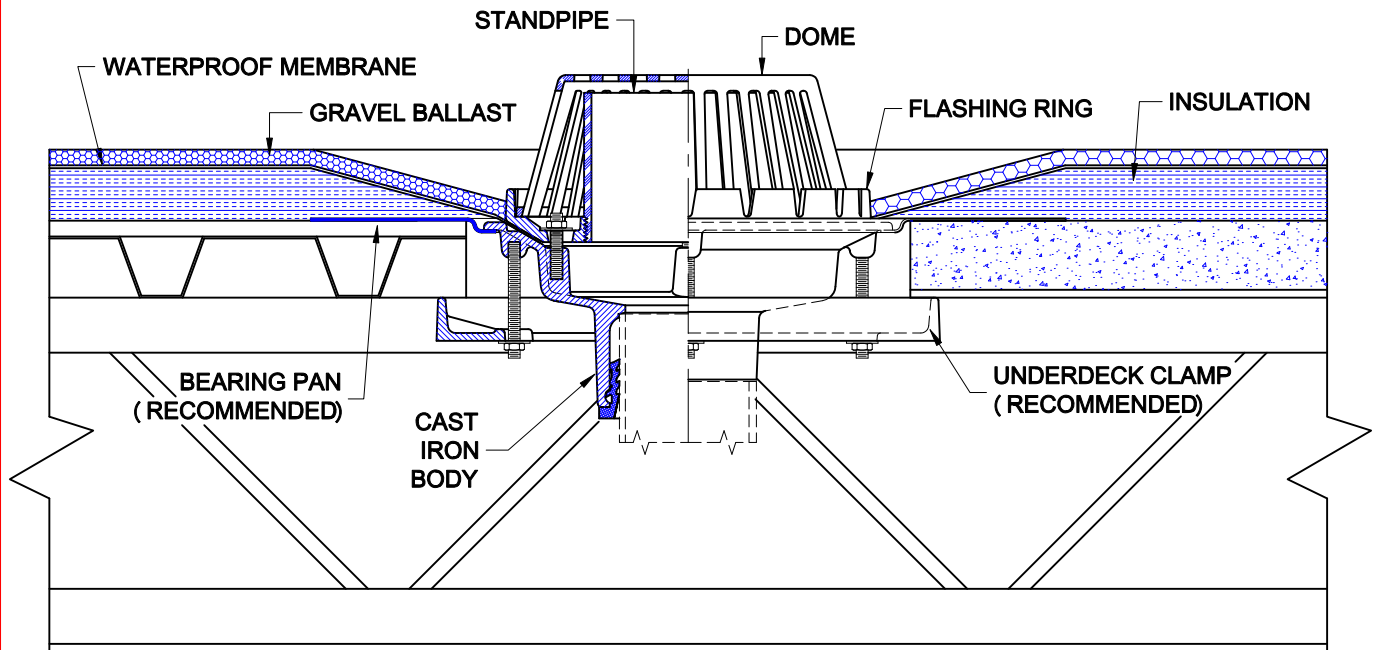


OVERFLOW ROOF DRAIN



3220-SD

CAST IRON ROOF DRAIN WITH FLANGE, FLASHING RING INTEGRAL WITH GRAVEL STOP, PLASTIC MUSHROOM DOME, PLASTIC STANDPIPE AND BOTTOM OUTLET.



INSTALLATION

The Wade 3220-SD is used for conventional roof membrane insulated systems and is designed for emergency overflow should the primary roof drain become clogged or if the rainfall is too great. For proper installation, an optional bearing pan and underdeck clamp are recommended.

1. At the predetermined location, cut a circular opening into the deck to receive the bearing pan. The pan is recessed to allow the drain body to sit almost flush with the deck.
2. Install the drain body into the bearing pan and secure with the underdeck clamp from underneath. Installation of piping may then proceed.
3. From the roof side, install threaded rods. The threaded rods will act as a guide to properly align the flashing ring.
4. If insulation is to be applied, it should be tapered toward the drain. Taper the insulation from a 24" diameter to the top surface of the body flange. If insulation is thicker than can be accommodated with a standard assembly, use a fixed either a fixed or adjustable extension extension.
5. On the roof side, apply the waterproof membrane per manufacturers recommendations. Membrane must lay flat and contour the opening. Install the flashing ring with the provided hardware, securely fastening the membrane between the body and the flashing ring. Gravel ballast is evenly spread over the membrane up to the perimeter of the gravel stop.
6. The standpipe is pre-installed for a 4" water depth overflow. If a shallower depth is desired, remove the standpipe, cut to the appropriate length and re-install.
7. The dome grate fits into the flashing ring and is secured by interlocking two of the threaded studs.

AutoCad.dwg

OVERFLOW ROOF DRAIN



Approval Date

Customer Approval

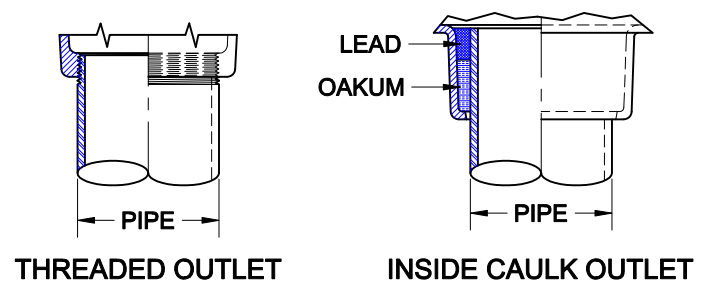
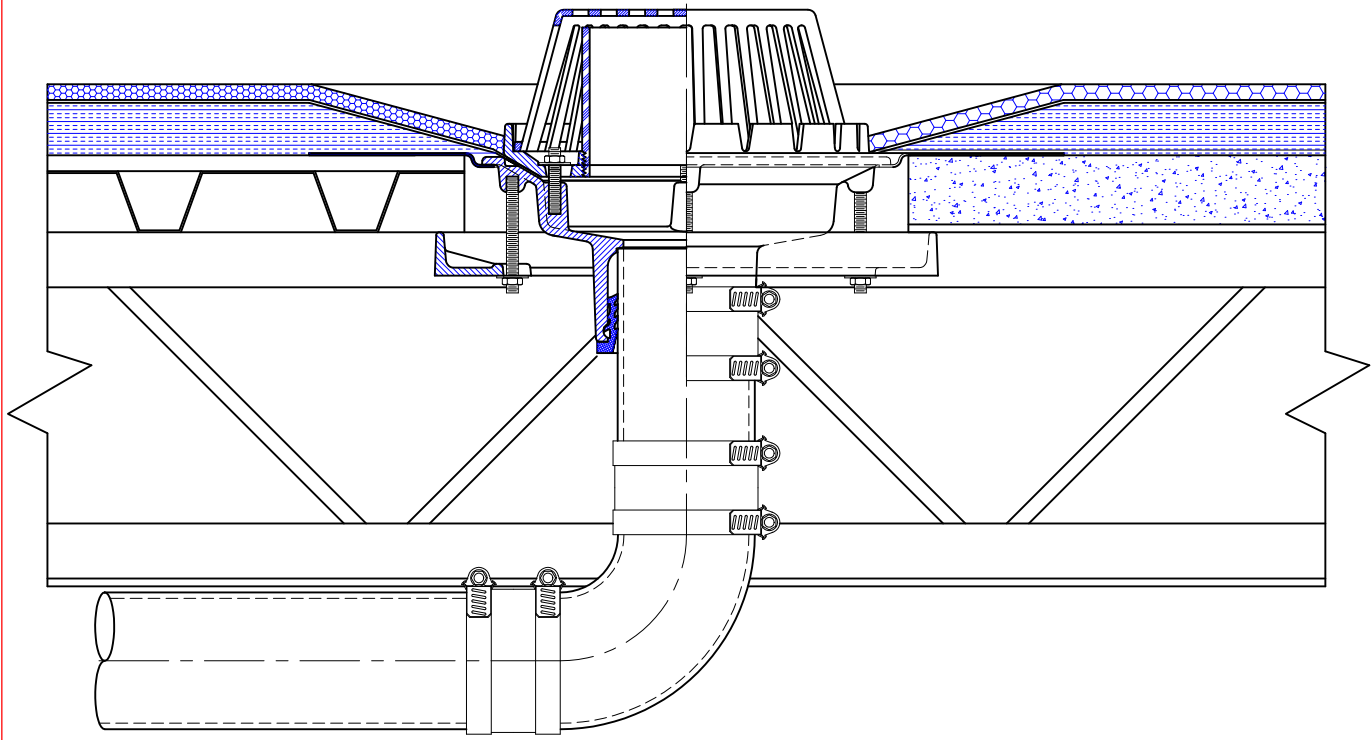
Job Location

Job Name

Dimensional Data (Inches/mm) are Subject to Manufacturers Tolerance and Change Without Notice. Wade Division / Tyler Pipe Assumes No Responsibility For Superseded or Voided Data

3220-SD

CAST IRON ROOF DRAIN WITH FLANGE, FLASHING RING INTEGRAL WITH GRAVEL STOP, PLASTIC MUSHROOM DOME, PLASTIC STANDPIPE AND BOTTOM OUTLET.



PIPE INSTALLATION

The drain piping is first run to an elevation below the roof drain. The drain body is secured to the pipe with any of four connections; No-Hub, Inside Caulk, Threaded or Push-On Ty-Seal. The type of connection must be specified upon ordering any Wade Drain. If the Ty-Seal connection is specified, apply Tyler Ty-Seal lubricant to the inside surfaces of the gasket and then firmly push the pipe into the hub until it contacts the pipe stop in the body. No-Hub outlets should be installed with Tyler or Anaco/Husky couplings and secured with a torque wrench to the manufacturers recommendations. Inside Caulk and threaded connections should follow standard industry practices. Once the body is connected to the pipe, the horizontal piping runs are sloped for gravity feed to the down pipe locations. The piping must be supported to recommended hanger spacings and insulated if required.