

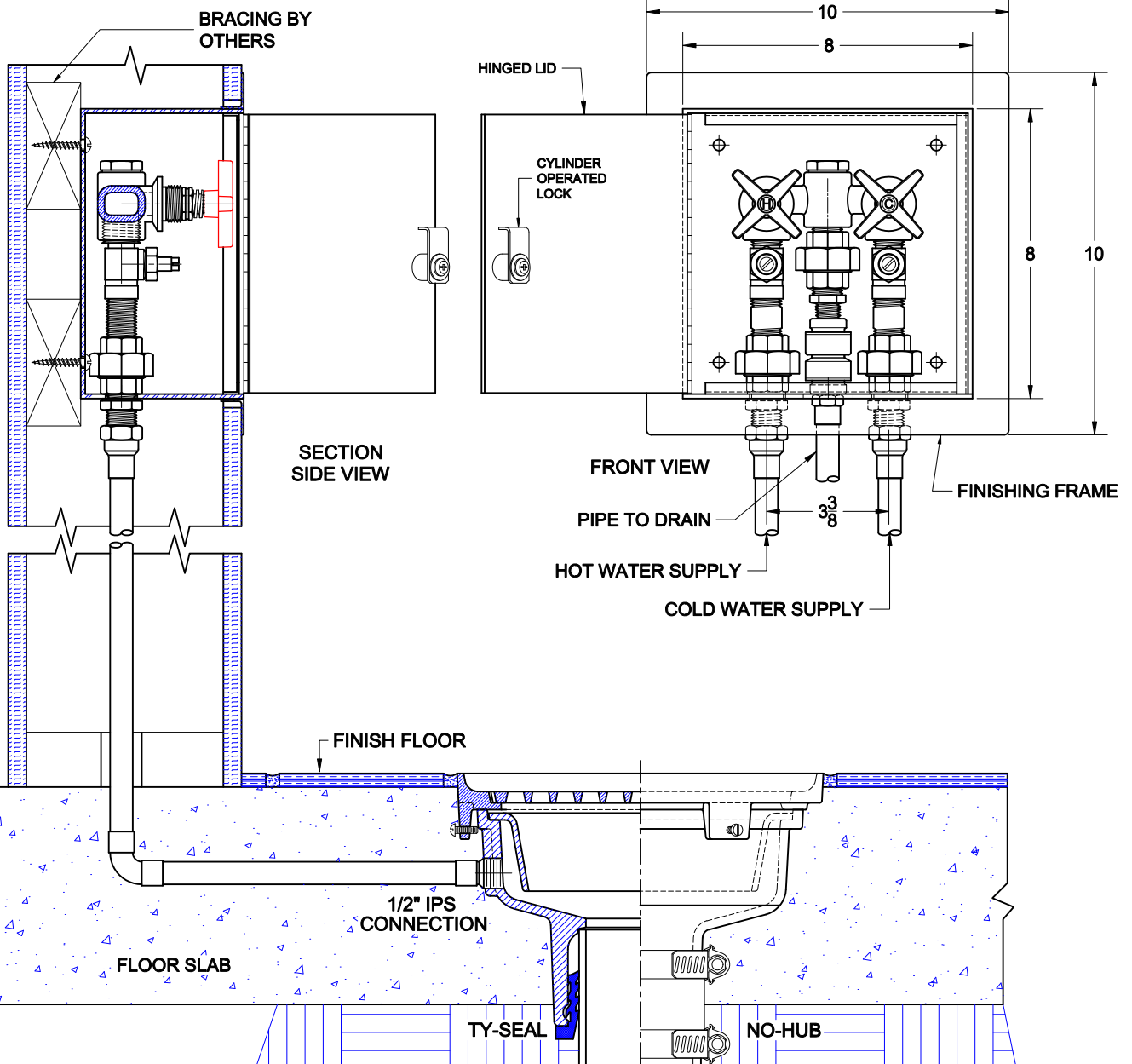
REMOTE WATER SUPPLY BOX



2440

STAINLESS STEEL REMOTE WATER SUPPLY BOX WITH KEY OPERATED CYLINDER LOCK, HOT AND COLD SHUT OFF VALVES, VACUUM BREAKER, BRASS SCREW DRIVER SHUT OFF VALVES, 1/2" COPPER SWEAT CONNECTIONS AND HINGED LID.

INSTALLATION INSTRUCTIONS



The Wade 2440 Remote water supply control box is used to supply hot, cold or tempered water to can wash drains, flushing rim drains or other devices requiring a water supply. The water supply is protected by a vacuum breaker. All operating parts are protected from vandalism by means of the hinged locking lid. Both hot and cold water supplies are provided with screw driver stops allowing maintenance of control valves without shutting down the main water supply. The 2440 is a flush mount device and the wall must have adequate bracing to secure the unit. At the predetermined location secure the box to the bracing with four anchor screws - holes are provided in the back face of the box behind the hinged lid. The face of the box should be at the anticipated finish wall surface. Hot and cold supply piping is connected to the appropriate inlets. The drain supply line is connected to the middle inlet and run to the drain or appliance. A slight gap between the outside perimeter of the box and the finished wall is recommended. After the finished wall is in place, apply a small bead of construction adhesive to the back side of the finishing frame and slide over the box until the frame contacts the wall.

AutoCad.dwg

Approval Date _____
 Customer Approval _____
 Job Location _____
 Job Name _____
 Dimensional Data (Inches/mm) are Subject to Manufacturers Tolerance and Change Without Notice. Wade Division / Tyler Pipe Assumes No Responsibility For Superseded or Voided Data

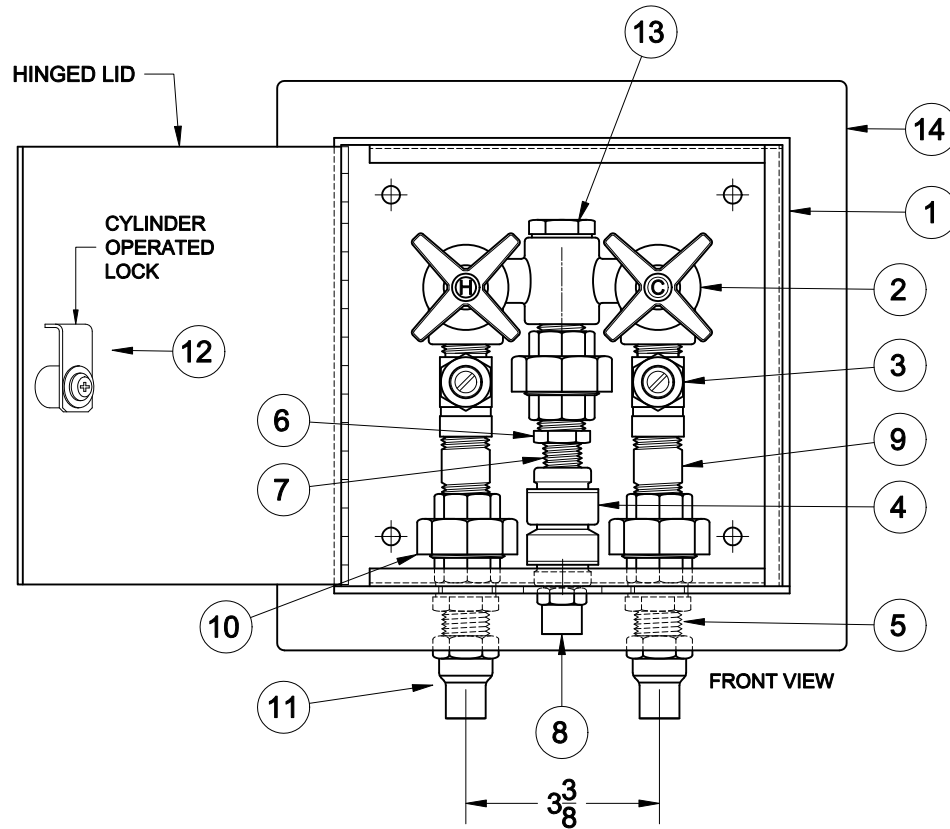
REMOTE WATER SUPPLY BOX



2440

STAINLESS STEEL REMOTE WATER SUPPLY BOX WITH KEY OPERATED CYLINDER LOCK, HOT AND COLD SHUT OFF VALVES, VACUUM BREAKER, BRASS SCREW DRIVER SHUT OFF VALVES, 1/2" COPPER SWEAT CONNECTIONS AND HINGED LID.

PARTS LIST



ITEM	QTY	UPC NO.	DESCRIPTION
1	1	WD2301061	BOX,8X8,S/S,HINGED,LID,W/LOCK
2	1	WD2301062	VALVE,47-900,HOT/COLD,BRASS
3	2	WD2301063	VALVE,SSR83R,SCREW,DRIVER,SLOT,BRASS
4	1	WD2301064	VACUUM,BREAKER,NLF9,BRASS
5	2	WD2301065	CONNECTOR,B0425-1/2X2,W/NUT,BRASS
6	1	WD2301066	BUSHING,HEX,1/2X3/8,NPT,BRASS
7	1	WD2301067	NIPPLE,3/8NPT,BRASS,CLOSE
8	1	WD2301068	ADAPTER,3/8X1/2,MIPXCS,COPPER
9	2	WD2301069	NIPPLE,1/2NPTX2LG,BRASS
10	3	WD2301070	UNION,1/2,FIP,BRASS
11	2	WD2301071	ADAPTER,1/2,FIPXCS,COPPER
12	1	WD2301072	CYLINDER,LOCK,W/KEYS
13	1	WD2301073	PLUG,1/2,MIP,HEX,BRASS
13	1	WD2301074	FRAME,FINISHING,2440-FF,S/S

Approval Date
 Customer Approval
 Job Location
 Job Name
 Dimensional Data (Inches/mm) are Subject to Manufacturers Tolerance and Change Without Notice. Wade Division / Tyler Pipe Assumes No Responsibility For Superseded or Voided Data