

REMOTE WATER SUPPLY BOX



Approval
Date

Customer
Approval

Job
Location

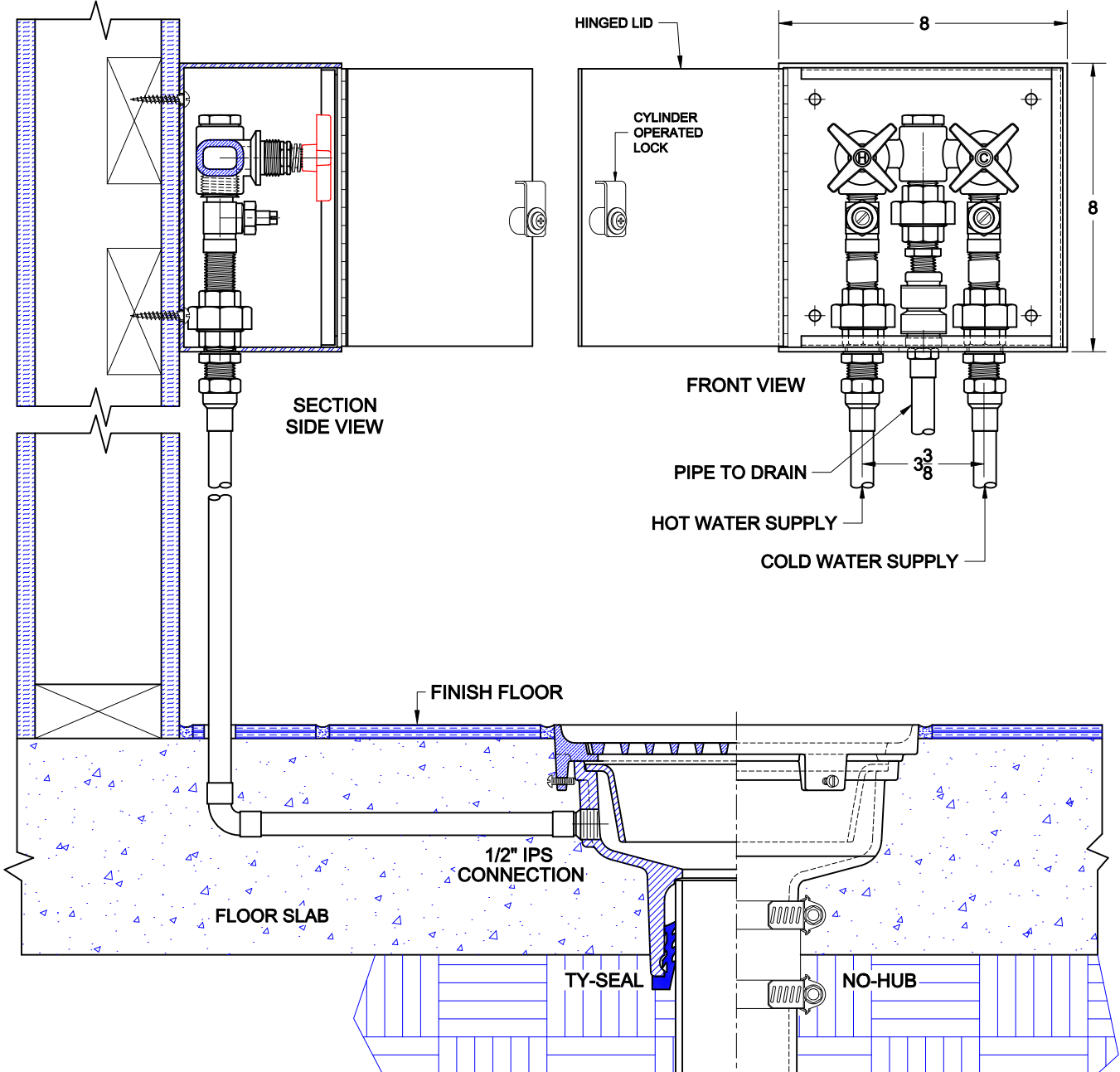
Job
Name

Dimensional Data (Inches/mm) are Subject to Manufacturers Tolerance and Change Without Notice. Wade Division / Tyler Pipe Assumes No Responsibility For Superseded or Voided Data

2440-S

STAINLESS STEEL REMOTE WATER SUPPLY BOX WITH KEY OPERATED CYLINDER LOCK, HOT AND COLD SHUT OFF VALVES, VACUUM BREAKER, BRASS SCREW DRIVER SHUT OFF VALVES, 1/2" COPPER SWEAT CONNECTIONS AND HINGED LID.

INSTALLATION INSTRUCTIONS



The Wade 2440 Remote water supply control box is used to supply hot, cold or tempered water to can wash drains, flushing rim drains or other devices requiring a water supply. The water supply is protected by a vacuum breaker. All operating parts are protected from vandalism by means of the hinged locking lid. Both hot and cold water supplies are provided with screw driver stops allowing maintenance of control valves without shutting down the main water supply. The 2440 is a surface mount device and the wall must have adequate backing to secure the unit. At the predetermined location secure the box to the wall with four anchor screws - holes are provided in the back face of the box behind the hinged lid. Hot and cold supply piping is connected to the appropriate inlets. The drain supply line is connected to the middle inlet and run to the drain or appliance.

AutoCad.dwg

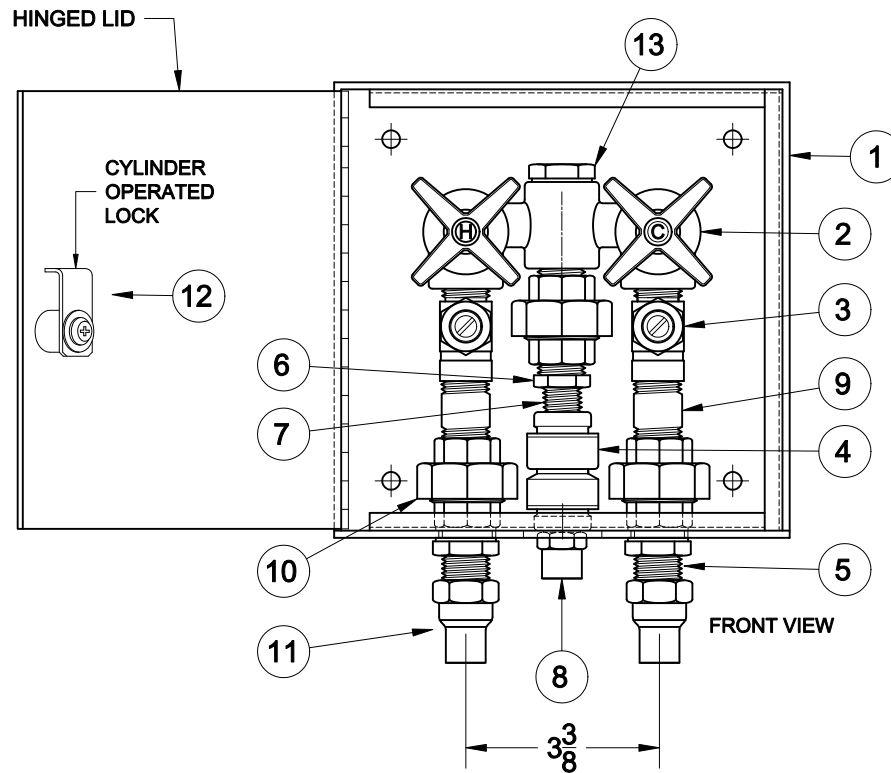
REMOTE WATER SUPPLY BOX



2440-S

STAINLESS STEEL REMOTE WATER SUPPLY BOX WITH KEY OPERATED CYLINDER LOCK, HOT AND COLD SHUT OFF VALVES, VACUUM BREAKER, BRASS SCREW DRIVER SHUT OFF VALVES, 1/2" COPPER SWEAT CONNECTIONS AND HINGED LID.

PARTS LIST



ITEM	QTY	UPC NO.	DESCRIPTION
1	1	WD2301061	BOX,8X8,S/S,HINGED,LID,W/LOCK
2	1	WD2301062	VALVE,47-900,HOT/COLD,BRASS
3	2	WD2301063	VALVE,SSR83R,SCREW,DRIVER,SLOT,BRASS
4	1	WD2301064	VACUUM,BREAKER,NLF9,BRASS
5	2	WD2301065	CONNECTOR,B0425-1/2X2,W/NUT,BRASS
6	1	WD2301066	BUSHING,HEX,1/2X3/8,NPT,BRASS
7	1	WD2301067	NIPPLE,3/8NPT,BRASS,CLOSE
8	1	WD2301068	ADAPTER,3/8X1/2,MIPXCS,COPPER
9	2	WD2301069	NIPPLE,1/2NPTX2LG,BRASS
10	3	WD2301070	UNION,1/2,FIP,BRASS
11	2	WD2301071	ADAPTER,1/2,FIPXCS,COPPER
12	1	WD2301072	CYLINDER,LOCK,W/KEYS
13	1	WD2301073	PLUG,1/2,MIP,HEX,BRASS

Approval Date
 Customer Approval
 Job Location
 Job Name
 Dimensional Data (Inches/mm) are Subject to Manufacturers Tolerance and Change Without Notice.

Wade Division / Tyler Pipe Assumes No Responsibility For Superseded or Voided Data