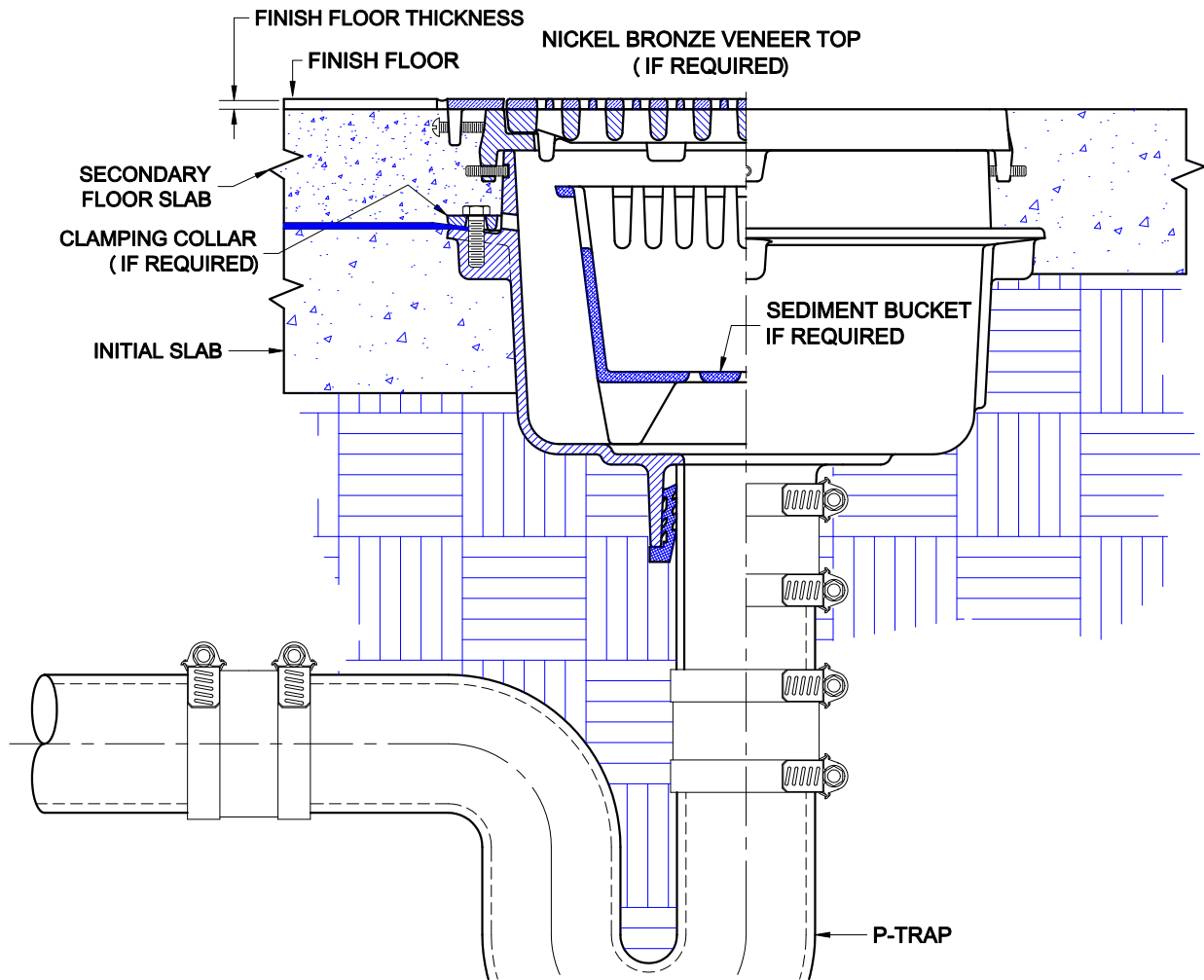


SQUARE FLOOR DRAIN



2370 SERIES

CAST IRON FLOOR / AREA DRAIN WITH DUCTILE IRON TRACTOR STYLE GRATE, FLANGE AND BOTTOM OUTLET.
INSTALLATION INSTRUCTIONS



The Wade 2370 is suitable for various floor construction methods - it is ideally suited for smooth finished stained concrete floors or for exterior applications. The drain piping is first run to an elevation below the expected finish floor level. The piping must include a p-trap and the drain body is secured to the pipe with with any of three connections; No-Hub, Inside Caulk, or Push-On Ty-Seal. The type of connection must be specified upon ordering any Wade Drain. If the Ty-Seal connection is specified, apply Tyler Ty-Seal lubricant to the inside surfaces of the gasket and then firmly push the drain body onto the pipe until it contacts the pipe stop in the body. No-Hub outlets should be installed with Tyler or Anaco/Husky couplings and secured with a torque wrench to the manufacturers recommendations. Inside Caulk connections should follow standard industry practices. Once the body is connected to the pipe, the initial concrete sub-floor is poured to an elevation level with the top flange of the drain body. The waterproofing membrane is applied to the the sub-floor surface and over the drain body. The optional clamp device is then placed onto the drain and secured - the membrane must be clamped between the body and the clamp device. The top of the drain should be at the finish floor level or slightly below. If a finish floor is to be applied, the top of the drain should extend above the structural slab to a dimension of the thickness of the floor material. For slab-on-grade applications, the body is simply connected to the piping and concrete is poured to the top surface.

Note: If the drain is to be installed into asphalt paved parking areas which will be subjected to vehicular traffic, the drain must be installed into a reinforced concrete pad of sufficient thickness to support the traffic. This pad must extend around the drain body two or three times the top diameter. This is to keep weight from transferring to the piping system.

Care must be taken to protect the top during installation. Use either cardboard, tape or other materials to protect the top during construction.

AutoCad.dwg

Approval Date
Customer Approval
Job Location
Job Name
Dimensional Data (Inches/mm) are Subject to Manufacturers Tolerance and Change Without Notice.
Wade Division / Tyler Pipe Assumes No Responsibility For Superseded or Voided Data