

ADJUSTABLE FLOOR DRAIN



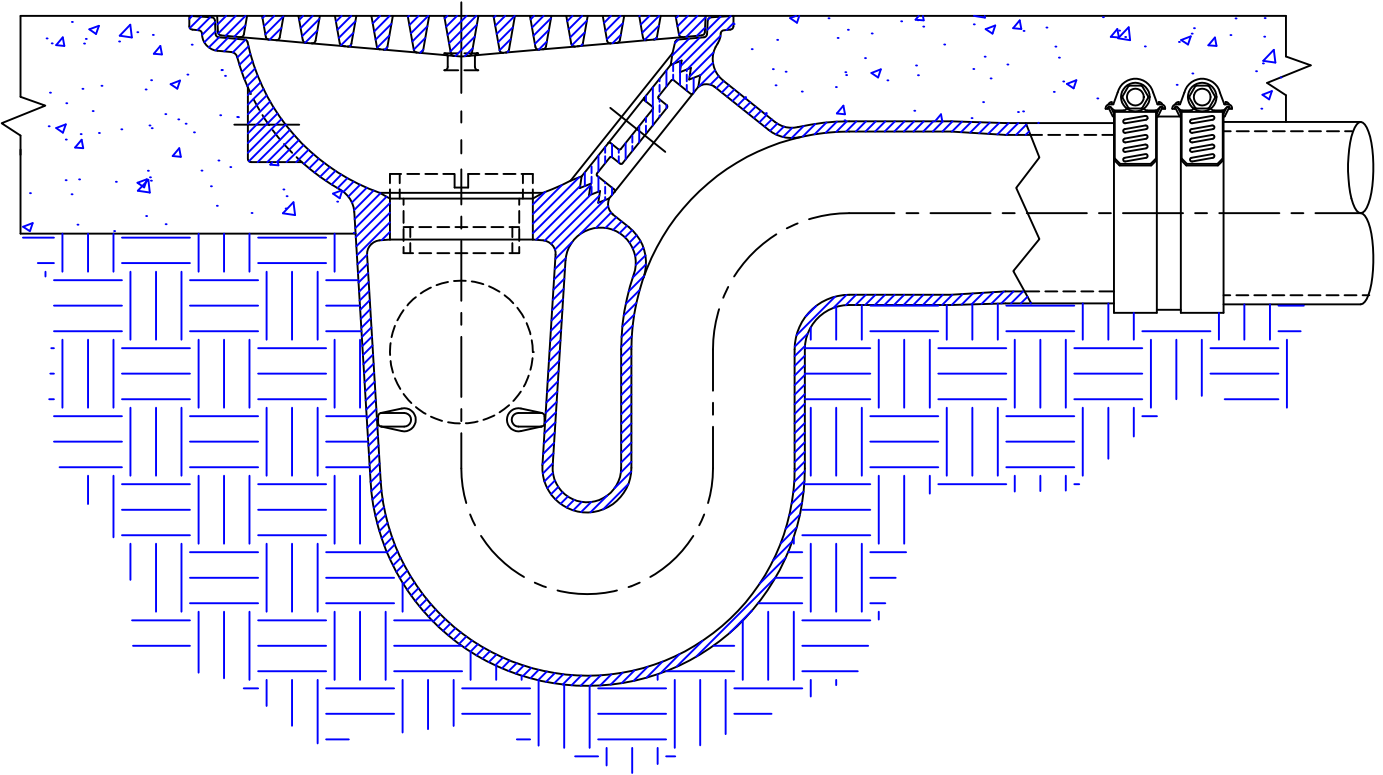
Approval
Date

2210 SERIES

CAST IRON FLOOR / AREA DRAIN WITH INTEGRAL P-TRAP, CAST IRON GRATE, BRASS CLEANOUT PLUG AND SPIGOT SIDE OUTLET.
INSTALLATION INSTRUCTIONS

Customer
Approval

Wade Division / Tyler Pipe Assumes No Responsibility For Superseded or Voided Data



Job
Location

Dimensional Data (Inches/mm) are Subject to Manufacturers Tolerance and Change Without Notice.

The Wade 2210 is suitable for concrete floors or for exterior applications. The light duty grating is for pedestrian traffic or areas where heavy loading is not anticipated. At the drain location, excavate a hole large enough to accept the drain. Once the body is connected to the pipe, concrete is poured to an elevation level with the top of the drain.

Care must be taken to protect the top during installation. Use either cardboard, tape or other materials to protect the top during construction.

Job
Name

AutoCad.dwg