

INDUSTRIAL FLOOR DRAIN



Approval Date

Customer Approval

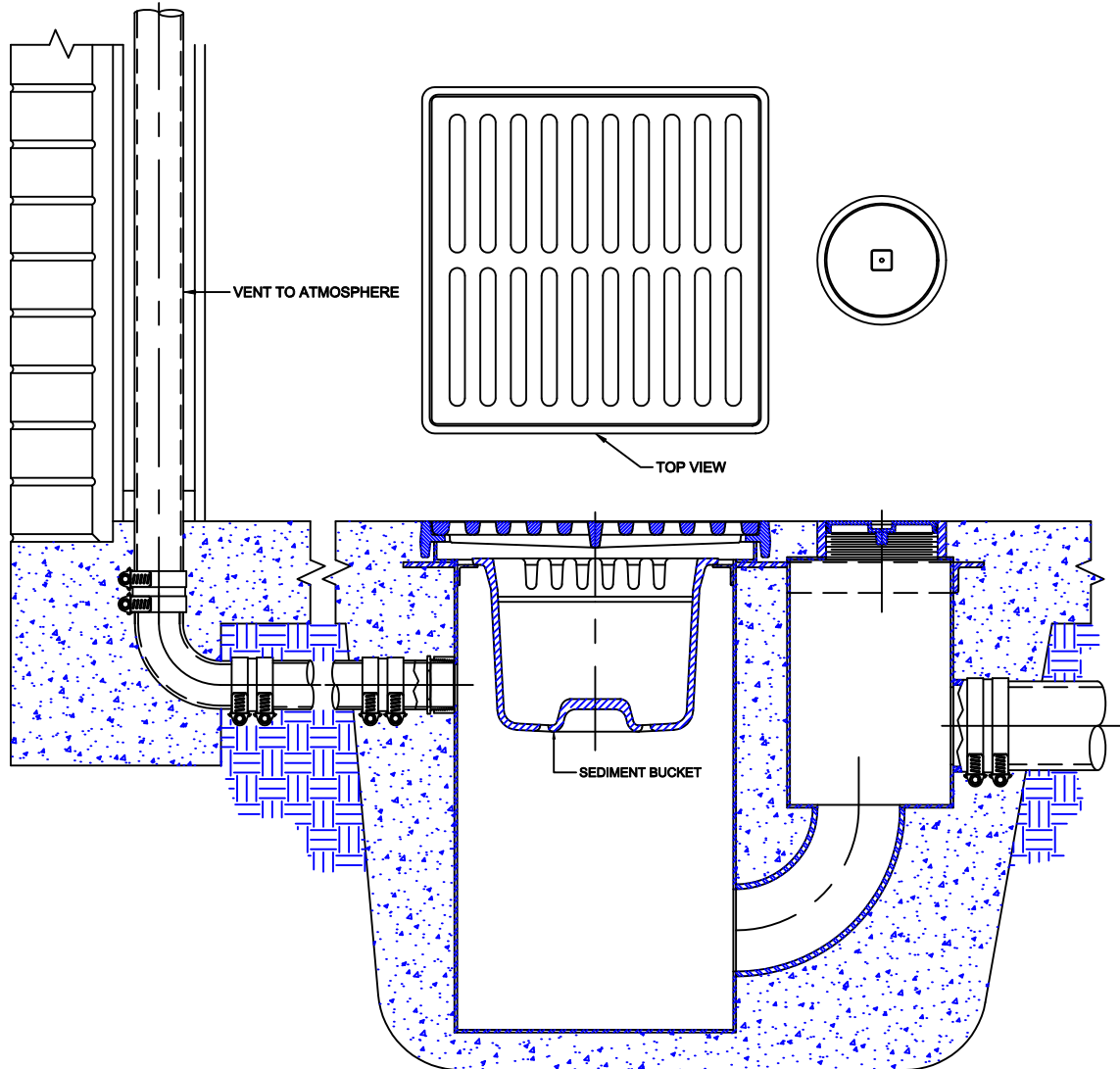
Job Location

Job Name

Dimensional Data (Inches/mm) are Subject to Manufacturers Tolerance and Change Without Notice. Wade Division / Tyler Pipe Assumes No Responsibility For Superseded or Voided Data

2050 SERIES

FABRICATED STEEL FLOOR / AREA DRAIN WITH DUCTILE IRON GRATE, INTEGRAL TRAP, 2" VENT CONNECTION, BRASS CLEANOUT PLUG, SEDIMENT BUCKET AND SPIGOT SIDE OUTLET.
INSTALLATION INSTRUCTIONS



The Wade 2050 is suitable for various floor construction methods - it is ideally suited for smooth finished stained concrete floors or for exterior applications. The 2050 is typically used in garages, maintenance areas, service bays and industrial locations where fuel or oil may be present. At the drain location, excavate an area of sufficient size to accept the drain body. Bracing may be required to level the top of the drain. The threaded connection should follow standard industry practices. The threaded vent connection is provided to vent vapors in areas that fuel or oil may be present in the waste water. If hydrocarbons are not anticipated the vent connection may be plugged. No-Hub connections should be installed with Tyler or Anaco/Husky couplings and secured with a torque wrench to the manufacturers recommendations. Once the body is connected to the pipe, the concrete is poured to an elevation level with the top of the drain body. The top of the drain should be at the finish floor level or slightly below. If a finish floor is to be applied, the top of the drain should extend above the structural slab to a dimension of the thickness of the floor material.

Note: If the drain is to be installed into asphalt paved parking areas which will be subjected to vehicular traffic, the drain must be installed into a reinforced concrete pad of sufficient thickness to support the traffic. This pad must extend around the drain body two or three times the top diameter. This is to keep weight from transferring to the piping system.

Care must be taken to protect the top during installation. Use either cardboard, tape or other materials to protect the top during construction.

AutoCad.dwg