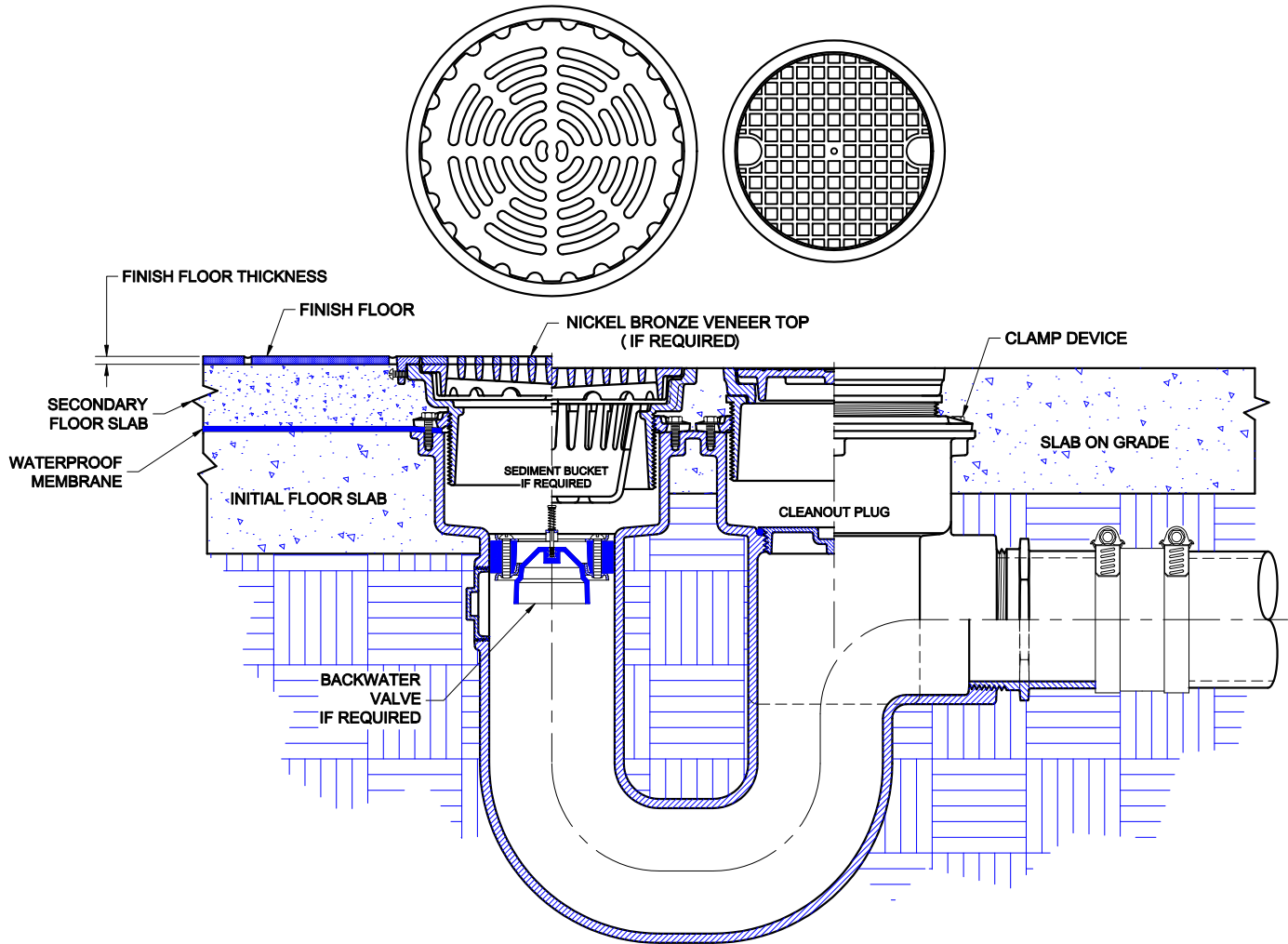


ADJUSTABLE FLOOR DRAIN



1370 SERIES

CAST IRON FLOOR / AREA DRAIN WITH INTEGRAL P-TRAP, CLAMPING COLLAR, DUCTILE IRON TRACTOR STYLE GRATE, ADJUSTABLE TOP, CLEANOUT AND BOTTOM OUTLET.
INSTALLATION INSTRUCTIONS



The Wade 1370 is suitable for various floor construction methods - it is ideally suited for smooth finished stained concrete floors or for exterior applications. Once the body is connected to the pipe, the initial concrete sub-floor is poured to an elevation level with the top flange of the drain body. The waterproofing membrane is applied to the the sub-floor surface and over the drain body. The clamping collar is then placed onto the drain and secured - the membrane must be clamped between the body and the clamping collar. The adjustable collars are positioned into the clamping collar and rotated up or down to adjust the tops to the finish floor level. The top should be at the finish floor level or slightly below. If a finish material such as tile is to be applied, the top of the drain should extend above the structural slab to a dimension of the thickness of the floor material. For slab-on-grade applications, the body is simply connected to the piping and concrete is poured to the top surface.

Note: If the drain is to be installed into asphalt paved parking areas which will be subjected to vehicular traffic, the drain must be installed into a reinforced concrete pad of sufficient thickness to support the traffic. This pad must extend around the drain body two or three times the top diameter. This is to keep weight from transferring to the piping system.

Care must be taken to protect the top during installation. Use either cardboard, tape or other materials to protect the top during construction.

Job Name: Dimensional Data (Inches/mm) are Subject to Manufacturers Tolerance and Change Without Notice.
 Job Location: Tyler Pipe / Wade Division / Tyler Pipe Assumes No Responsibility For Superseded or Voided Data
 Customer Approval: Wade Division / Tyler Pipe Assumes No Responsibility For Superseded or Voided Data
 Approval Date: