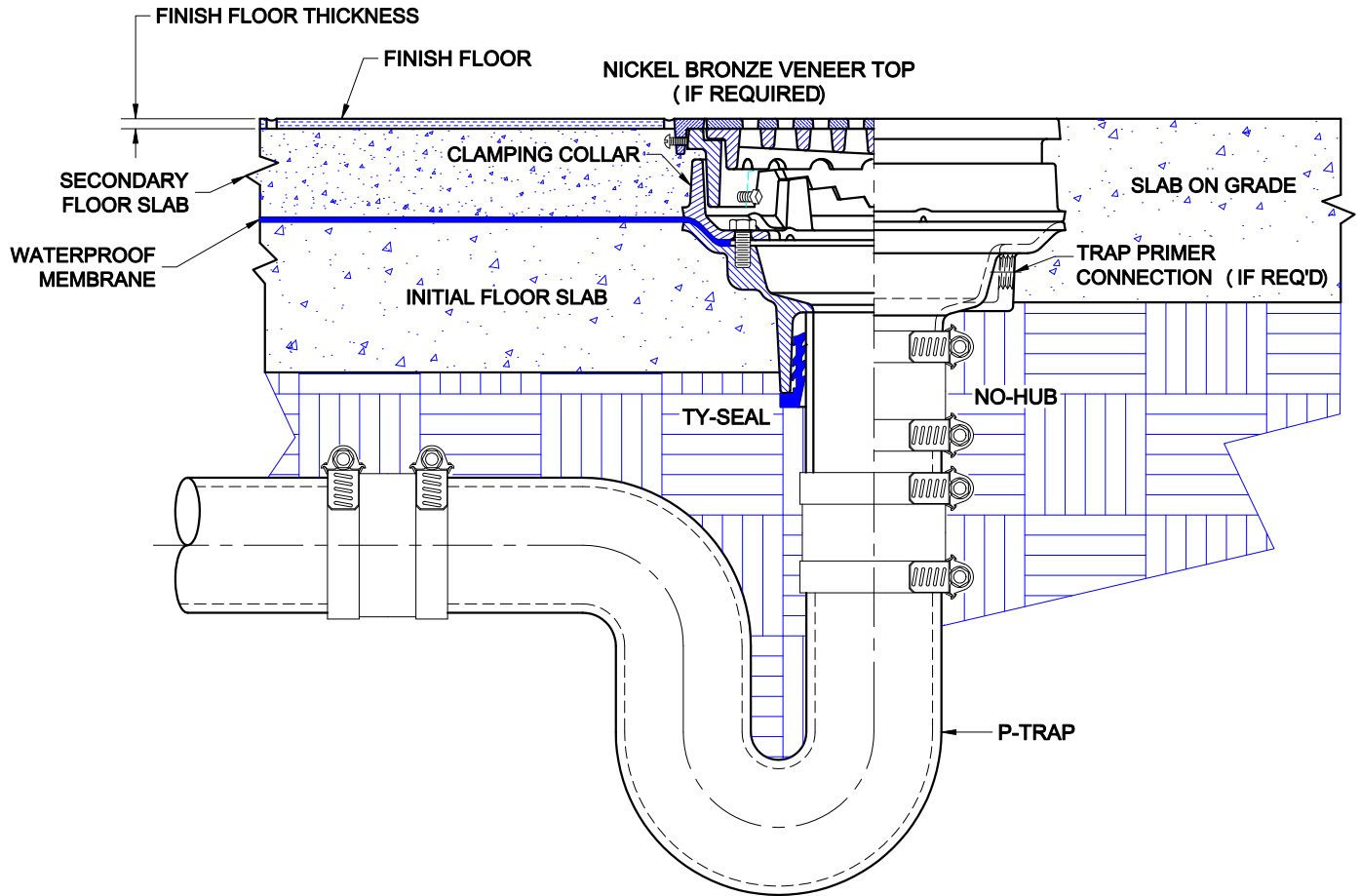


ADJUSTABLE FLOOR DRAIN



1300 SERIES

CAST IRON FLOOR / AREA DRAIN WITH CLAMPING COLLAR, DUCTILE IRON TRACTOR STYLE GRATE, ADJUSTABLE TOP AND BOTTOM OUTLET. INSTALLATION INSTRUCTIONS



The Wade 1300 is suitable for various floor construction methods - it is ideally suited for smooth finished stained concrete floors or for exterior applications. The drain piping is first run to an elevation below the expected finish floor level. The piping must include a p-trap and the drain body is secured to the pipe with with any of four connections; Threaded, No-Hub, Inside Caulk, or Push-On Ty-Seal. The type of connection must be specified upon ordering any Wade Drain. If the Ty-Seal connection is specified, apply Tyler Ty-Seal lubricant to the inside surfaces of the gasket and then firmly push the drain body onto the pipe until it contacts the pipe stop in the body. No-Hub outlets should be installed with Tyler or Anaco/Husky couplings and secured with a torque wrench to the manufacturers recommendations. Threaded or Inside Caulk connections should follow standard industry practices. Once the body is connected to the pipe, the initial concrete sub-floor is poured to an elevation level with the top flange of the drain body. The waterproofing membrane is applied to the the sub-floor surface and over the drain body. The clamping collar is then placed onto the drain and secured - the membrane must be clamped between the body and the clamping collar. The adjustable collar is positioned into the clamping collar and rotated up or down to adjust the top to the finish floor level. The top should be at the finish floor level or slightly below. If a finish material such as tile is to be applied, the top of the drain should extend above the structural slab to a dimension of the thickness of the floor material. For slab-on-grade applications, the body is simply connected to the piping and concrete is poured to the top surface.

Note: If the drain is to be installed into asphalt paved parking areas which will be subjected to vehicular traffic, the drain must be installed into a reinforced concrete pad of sufficient thickness to support the traffic. This pad must extend around the drain body two or three times the top diameter. This is to keep weight from transferring to the piping system.

Care must be taken to protect the top during installation. Use either cardboard, tape or other materials to protect the top during construction.

Approval Date

Customer Approval

Job Location

Job Name

Wade Division / Tyler Pipe Assumes No Responsibility For Superseded or Voided Data. Dimensional Data (Inches/mm) are Subject to Manufacturers Tolerance and Change Without Notice.