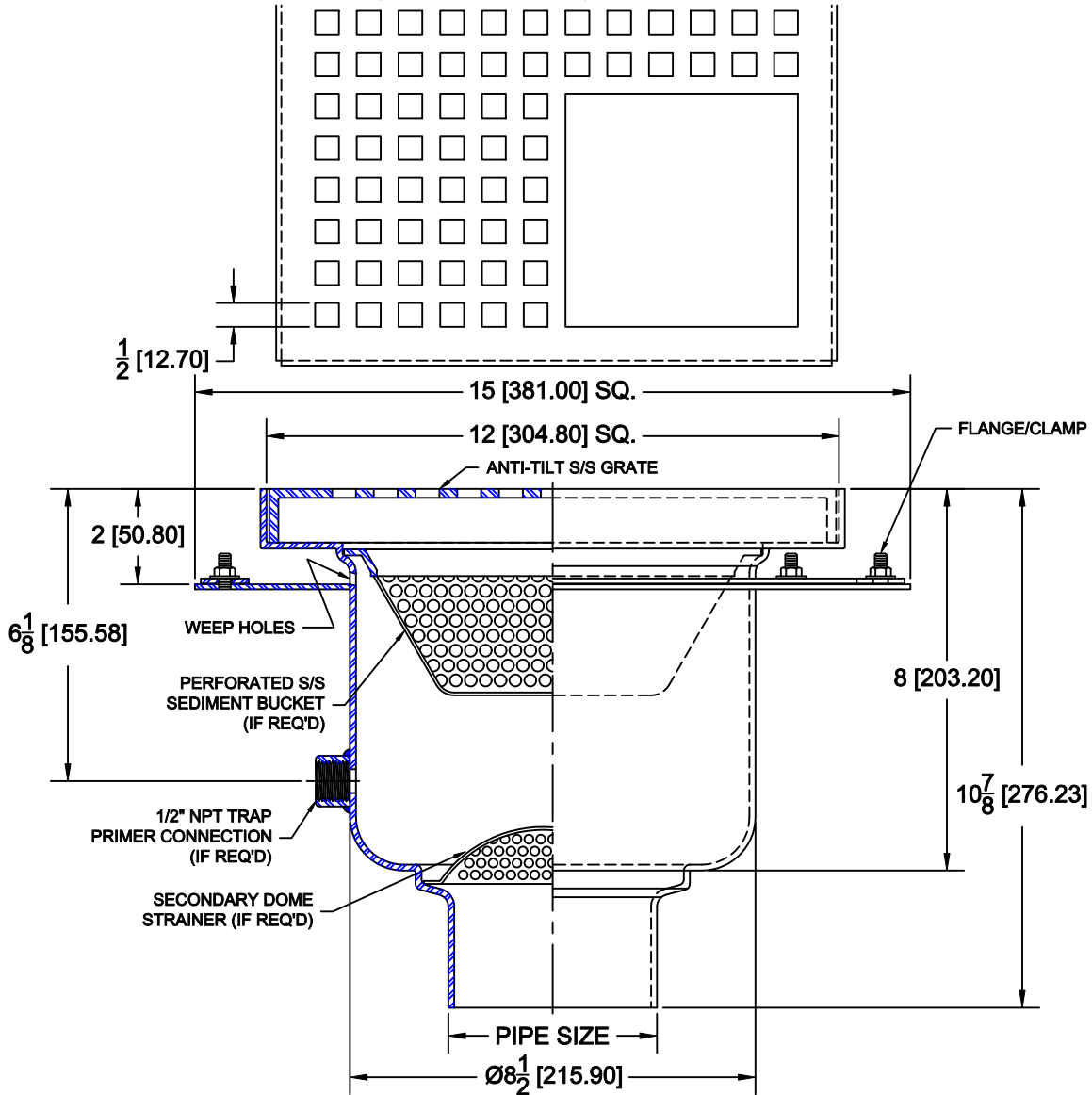


FLOOR SINKS - STAINLESS STEEL **WADE**

9740-16-26

STAINLESS STEEL 12" SQUARE FLOOR SINK WITH 3/4 NON-TILT PERFORATED GRATE, 8" DEEP ROUND SUMP, FLANGE, CLAMP DEVICE AND BOTTOM OUTLET.

BODY: 14GA 304 S/S GRATE: 12GA 304 S/S
ANSI LOAD RATING: LD LIGHT DUTY (UNDER 2,000 LBS)



OPTIONS

Cat. No.	Pipe Size	Wt. Lbs.	Suffix	Description
9742-16-26	2 (50)	13.0	6	1/2" NPT TRAP PRIMER CONNECTION
9743-16-26	3 (75)	13.0	9	SECONDARY DOME STRAINER
9744-16-26	4 (100)	13.0	27	SEDIMENT BUCKET
9746-16-26	6 (100)	13.0		

OUTLETS

Suffix	Description
NH	NO-HUB
TY	TY-SEAL

AutoCad.dwg