

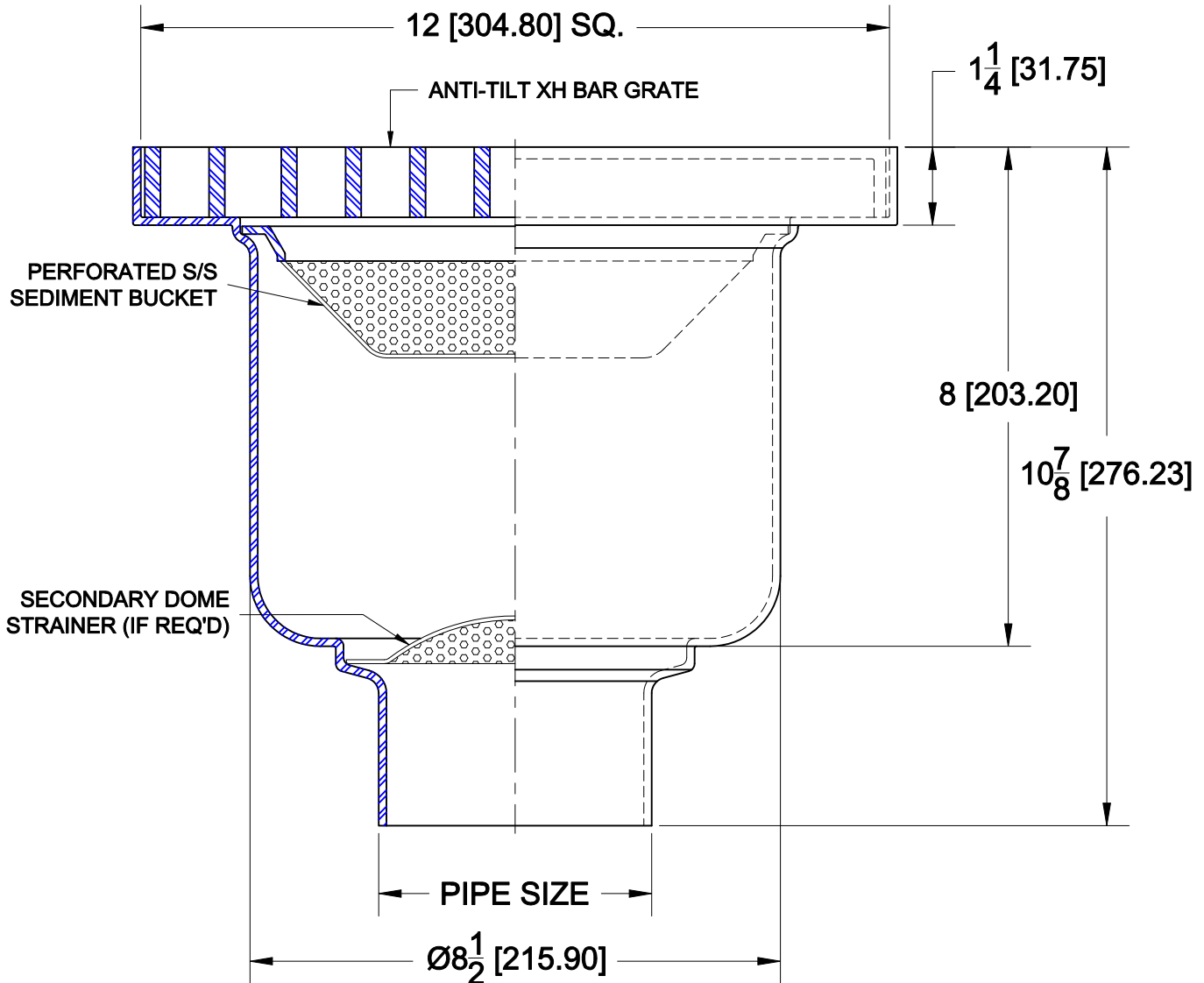
FLOOR SINKS - STAINLESS STEEL



9740-155

STAINLESS STEEL 12" SQUARE FLOOR SINK WITH NON-TILT XH BAR GRATE, 6" DEEP ROUND SUMP, PERFORATED SEDIMENT BUCKET & BOTTOM OUTLET.

ANSI LOAD RATING - XH EXTRA HEAVY DUTY (7,500 - 10,000 LBS)



OPTIONS

Cat. No.	Pipe Size	Wt. Lbs.	Suffix	Description
<input type="checkbox"/> 9742-155	2 (50)	13.0	<input type="checkbox"/> 9	SECONDARY DOME STRAINER
<input type="checkbox"/> 9743-155	3 (75)	13.0	<input type="checkbox"/> 15	HALF GRATE
<input type="checkbox"/> 9744-155	4 (100)	13.0	<input type="checkbox"/> 16	THREE-QUARTER GRATE
<input type="checkbox"/> 9746-155	6 (100)	13.0	<input type="checkbox"/> 18	SOLID COVER
			<input type="checkbox"/> 26	FLANGE & CLAMP DEVICE

OUTLETS

Suffix	Description
<input type="checkbox"/> NH	NO-HUB
<input type="checkbox"/> TY	TY-SEAL

AutoCad.dwg