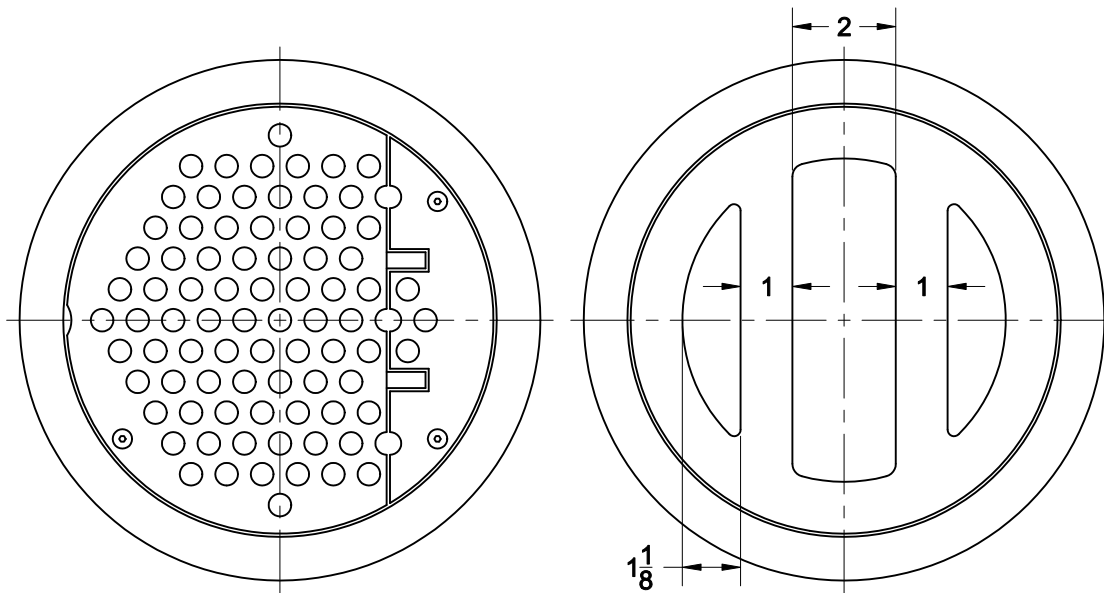


FLOOR SINK - FLUSHING RIM

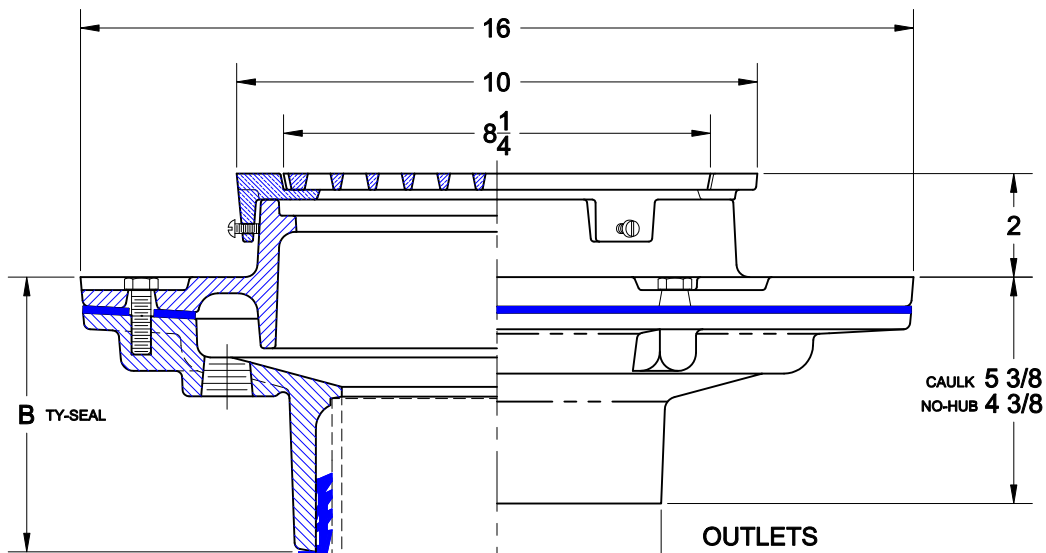


9300

CAST IRON FLUSHING RIM FLOOR SINK WITH NICKEL BRONZE TOP, HINGED PERFORATED GRATE, 3/4" NPT FLUSH CONNECTION AND BOTTOM OUTLET.



TYPE B (BAR GRATE)



SIZE	B
2"	5 7/8
3"	5 5/8
4"	5 5/8
6"	5 3/8

OUTLETS

Suffix	Description
<input type="checkbox"/> NH	NO-HUB (3,4,6")
<input type="checkbox"/> TY	TY-SEAL
<input type="checkbox"/> IC	INSIDE CAULK (3,4,6")

OPTIONS

Cat. No.	Pipe Size	Wt. Lbs.	Suffix	Description
<input type="checkbox"/> 9302	2	56.0	<input type="checkbox"/> B	FIXED GRATE W/ WIDE SLOTS (SECURED)
<input type="checkbox"/> 9303	3	55.0	<input type="checkbox"/> 93	P-TRAP W/ 1/2" FLUSHING CONNECTION
<input type="checkbox"/> 9304	4	55.0		
<input type="checkbox"/> 9306	6	55.0		

AutoCad.dwg