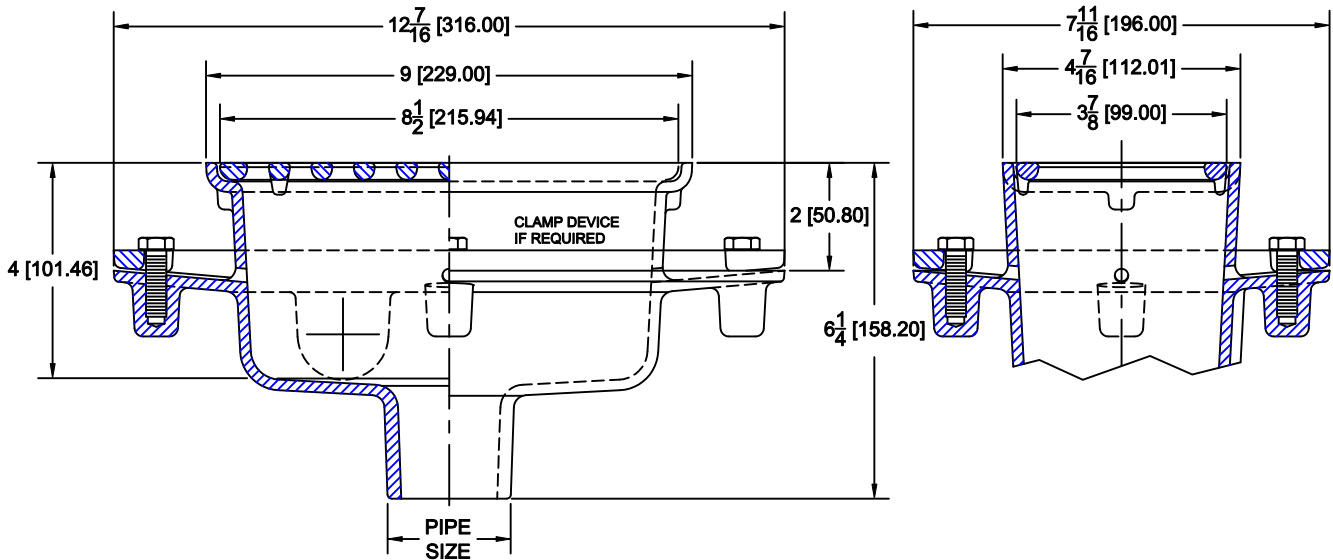
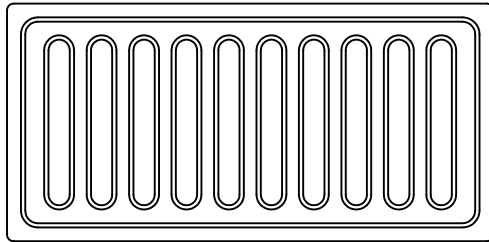


RECTANGULAR FLOOR SINK



9200-64

CAST IRON RECTANGULAR FLOOR SINK WITH A.R.E. PORCELAIN COATED INTERIOR, PORCELAIN COATED GRATE, ALUMINUM DOME BOTTOM STRAINER AND NO-HUB BOTTOM OUTLET



			OPTIONS	
Cat. No.	Pipe Size	Wt. Lbs.	Suffix	Description
<input type="checkbox"/> 9202-64	2 (50)	11.0	<input type="checkbox"/> 6	1/2" TRAP PRIMER CONNECTION
<input type="checkbox"/> 9203-64	3 (75)	11.5	<input type="checkbox"/> 15	HALF GRATE
			<input type="checkbox"/> 26	CLAMP DEVICE
			<input type="checkbox"/> 27	ALUMINUM SEDIMENT BUCKET
			<input type="checkbox"/> EF4	4" DIA. FUNNEL (SAME MATERIAL AS TOP)
			<input type="checkbox"/> EF6	6" DIA. FUNNEL (SAME MATERIAL AS TOP)

AutoCad.dwg