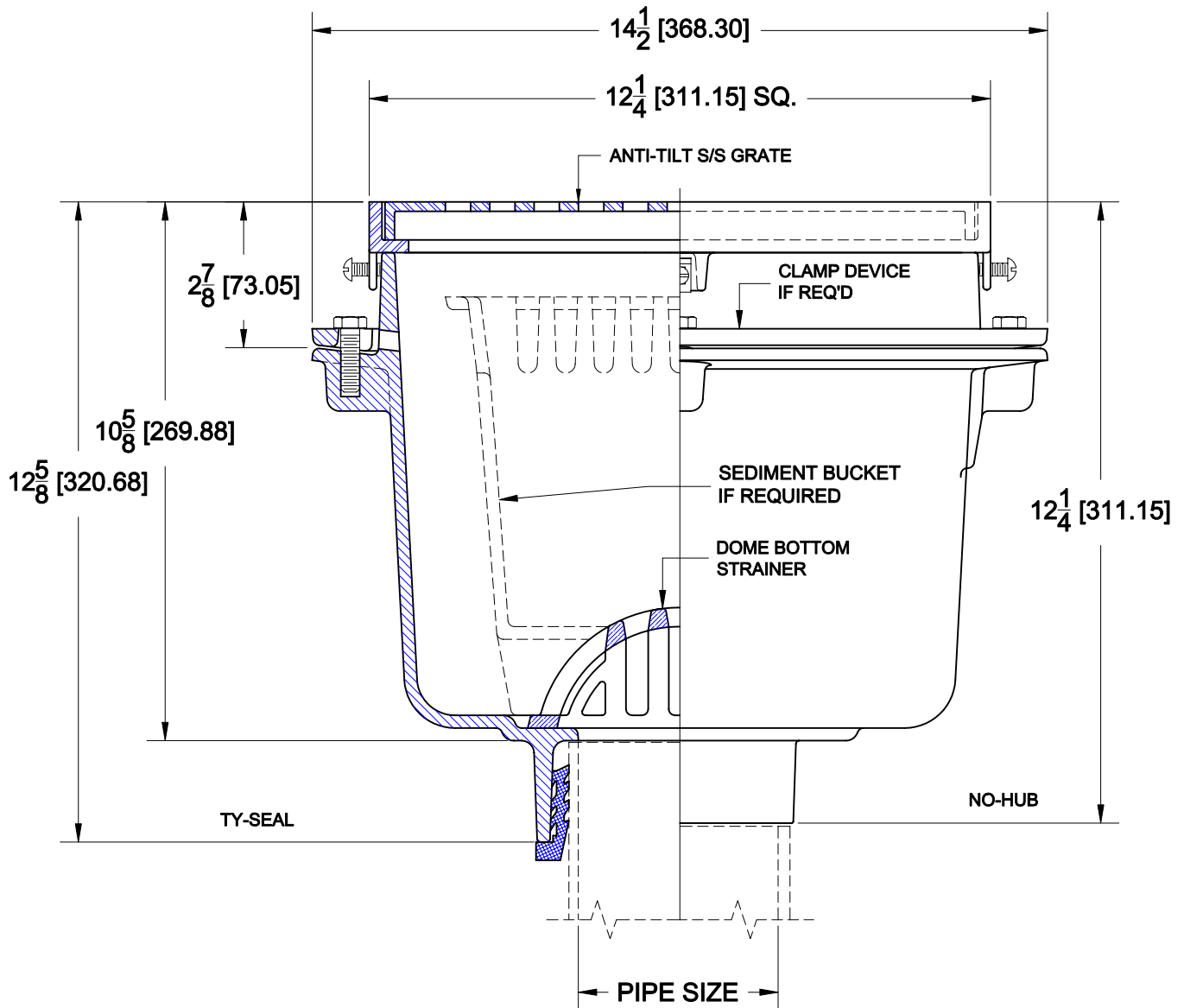


# FLOOR SINKS - SQUARE



9150-304

CAST IRON 12" SQUARE FLOOR SINK WITH 10" DEEP SUMP, A.R.E. INTERIOR, ALUMINUM DOME BOTTOM STRAINER AND STAINLESS STEEL GRATE AND FRAME.



### OPTIONS

Cat. No.	Pipe Size	Wt. Lbs.	Suffix	Description
<input type="checkbox"/> 9152-304	2 (50)	47.0	<input type="checkbox"/> 5	VANDAL PROOF
<input type="checkbox"/> 9153-304	3 (75)	47.0	<input type="checkbox"/> 26	CLAMP DEVICE
<input type="checkbox"/> 9154-304	4 (100)	47.0	<input type="checkbox"/> 27	SEDIMENT BUCKET
<input type="checkbox"/> 9156-304	6 (150)	48.0	<input type="checkbox"/> 155	EXTRA HEAVY DUTY BAR GRATE

### OUTLETS

<input type="checkbox"/> NH	NO-HUB	<input type="checkbox"/> TY	TY-SEAL	<input type="checkbox"/> IC	INSIDE CAULK	<input type="checkbox"/>
			(3,4,6")		(3,4")	

NOTE: TY-SEAL OUTLETS WILL ACCOMMODATE IPS PIPE SIZES IN 2", 3" & 4" ONLY. (PLASTIC, STEEL, ETC.)

AutoCad.dwg