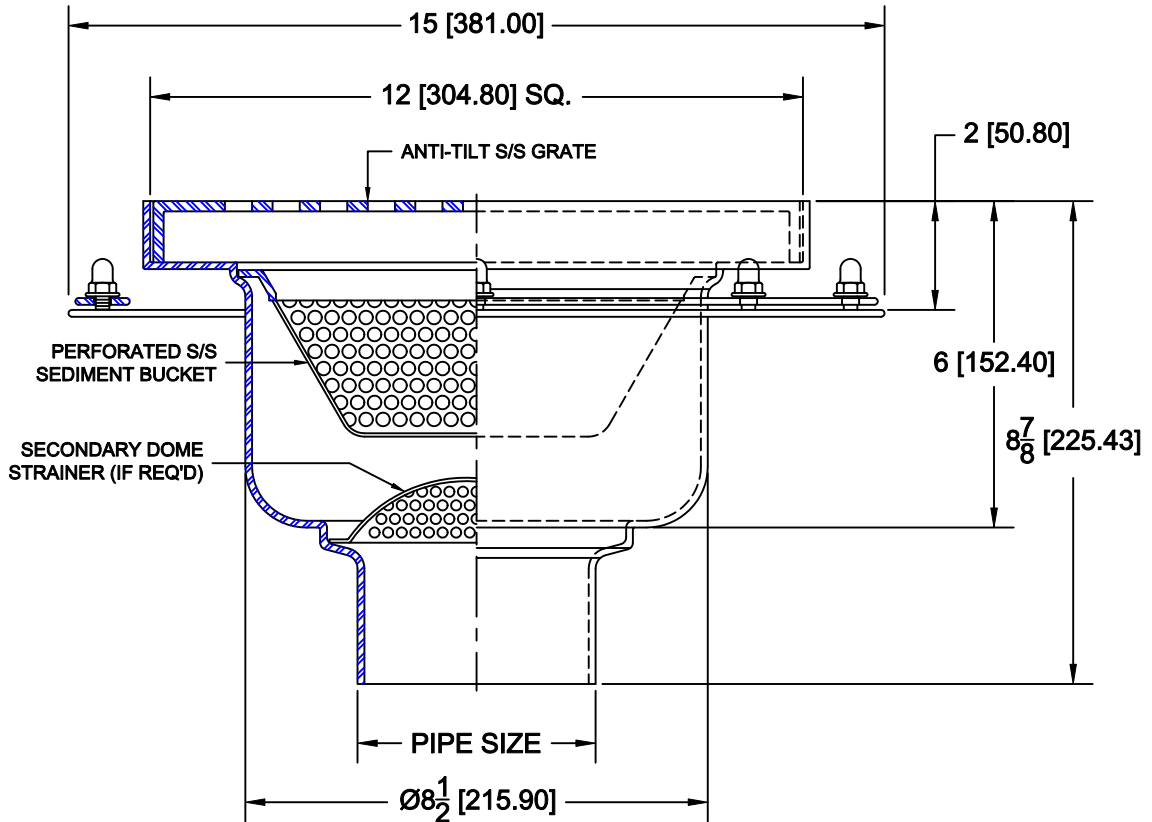
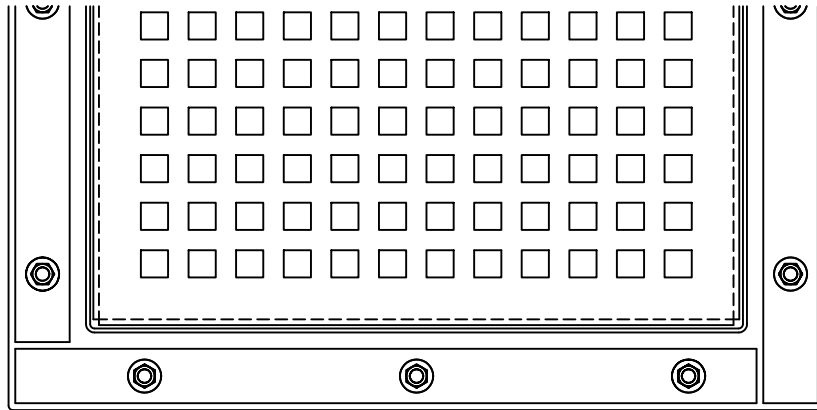


# FLOOR SINKS - STAINLESS STEEL



9100-26

STAINLESS STEEL 12" SQUARE FLOOR SINK WITH NON-TILT S/S GRATE, 6" DEEP ROUND SUMP  
FLANGE W/ CLAMP DEVICE, PERFORATED SEDIMENT BUCKET & BOTTOM OUTLET.



### OPTIONS

Cat. No.	Pipe Size	Wt. Lbs.	Suffix	Description
<input type="checkbox"/> 9102-26	2 (50)	13.0	<input type="checkbox"/> 9	SECONDARY DOME STRAINER
<input type="checkbox"/> 9103-26	3 (75)-26	13.0	<input type="checkbox"/> 15	HALF GRATE
<input type="checkbox"/> 9104-26	4 (100)	13.0	<input type="checkbox"/> 16	THREE-QUARTER GRATE
			<input type="checkbox"/> 18	SOLID COVER
			<input type="checkbox"/> 26	FLANGE & CLAMP DEVICE
			<input type="checkbox"/> 155	XH BAR GRATE (7,500-10,000 LBS)

### OUTLETS

Suffix	Description
--------	-------------

- NH NO-HUB
- TY TY-SEAL

AutoCad.dwg