

SINK CARRIER



620-03

FIXTURE

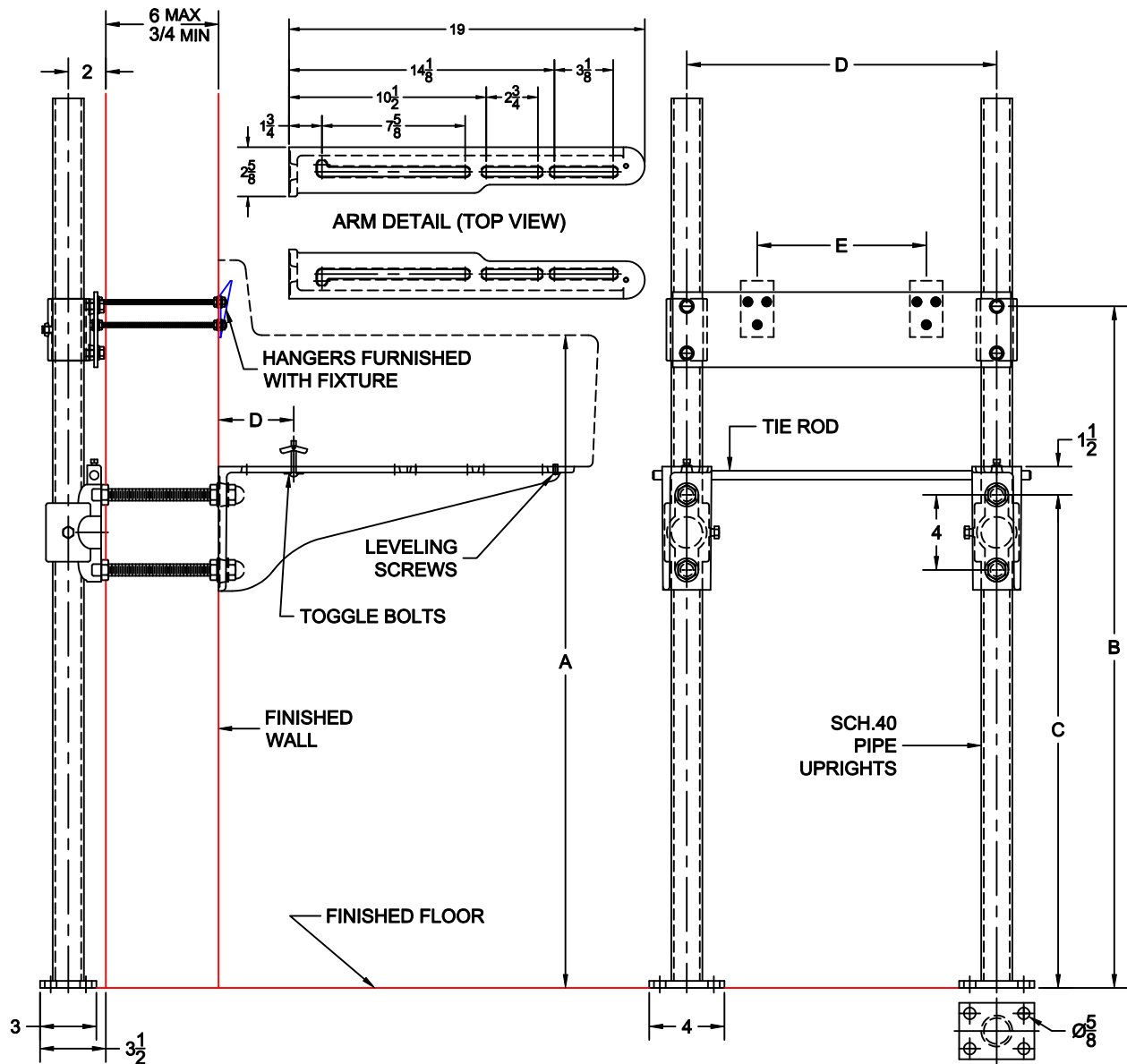
SINK CARRIER WITH PIPE UPRIGHTS, WELDED BASE FEET, A.R.E. HEAVY DUTY ARMS, HANGER SUPPORT PLATE & HARDWARE.

Manufacturer _____

Name _____ No. _____

Style _____

NOTE: LETTER DIMENSIONS VARY ACCORDING TO FIXTURE USED.



OPTIONS

Cat. No.	Type	Wt. Lbs.	Suffix	Description
<input type="checkbox"/> 620-03	SGL	59.0	<input type="checkbox"/> M36	SQUARE UPRIGHTS

NOTE: CONTRACTOR MUST VERIFY DIMENSIONS WITH FIXTURE MANUFACTURER ROUGH-IN DATA
 TYLER PIPE / WADE DIVISION ACCEPTS NO RESPONSIBILITY FOR ANY INACCURACIES IN DRAWING

AutoCad.dwg

Approval Date _____
 Customer Approval _____
 Job Location _____
 Job Name _____
 Dimensional Data (Inches/mm) are Subject to Manufacturers Tolerance and Change Without Notice.
 Wade Division / Tyler Pipe Assumes No Responsibility For Superseded or Voided Data