

SINK CARRIER



Approval Date

610-02

FIXTURE

SINK CARRIER WITH PIPE UPRIGHTS, WELDED BASE FEET, A.R.E. HEAVY DUTY ARMS AND SUPPORT HARDWARE.

Manufacturer _____

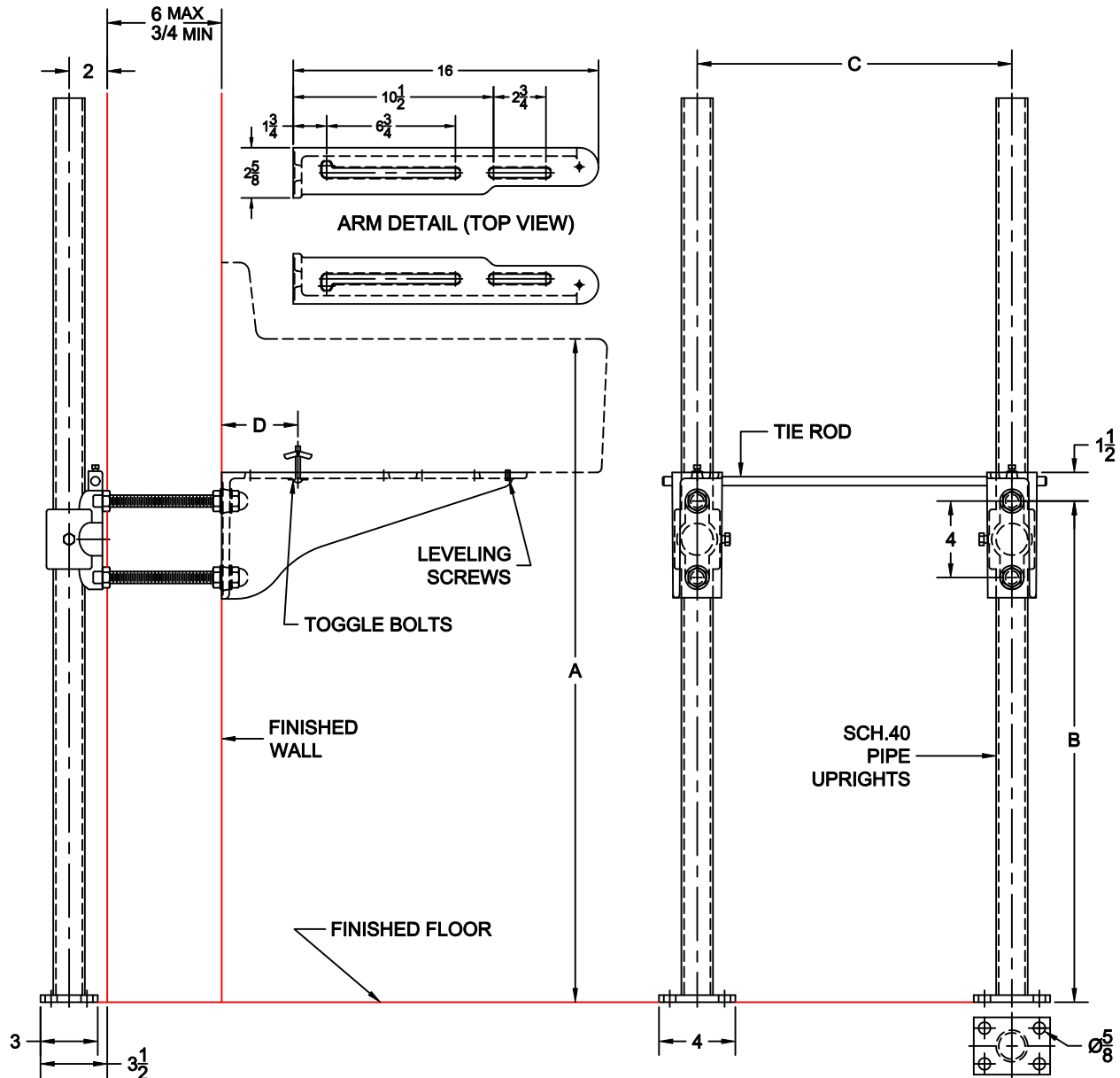
Name _____ No. _____

Style _____

Customer Approval

Wade Division / Tyler Pipe Assumes No Responsibility For Superseded or Voided Data

NOTE: LETTER DIMENSIONS VARY ACCORDING TO FIXTURE USED.



Job Location

Dimensional Data (Inches/mm) are Subject to Manufacturers Tolerance and Change Without Notice.

Job Name

| OPTIONS | | | | |
|---------------------------------|------|----------|------------------------------|-----------------|
| Cat. No. | Type | Wt. Lbs. | Suffix | Description |
| <input type="checkbox"/> 610-02 | SGL | 59.0 | <input type="checkbox"/> M36 | SQUARE UPRIGHTS |

NOTE: CONTRACTOR MUST VERIFY DIMENSIONS WITH FIXTURE MANUFACTURER ROUGH-IN DATA
 TYLER PIPE / WADE DIVISION ACCEPTS NO RESPONSIBILITIES FOR ANY INACCURACIES IN DRAWING

AutoCad.dwg