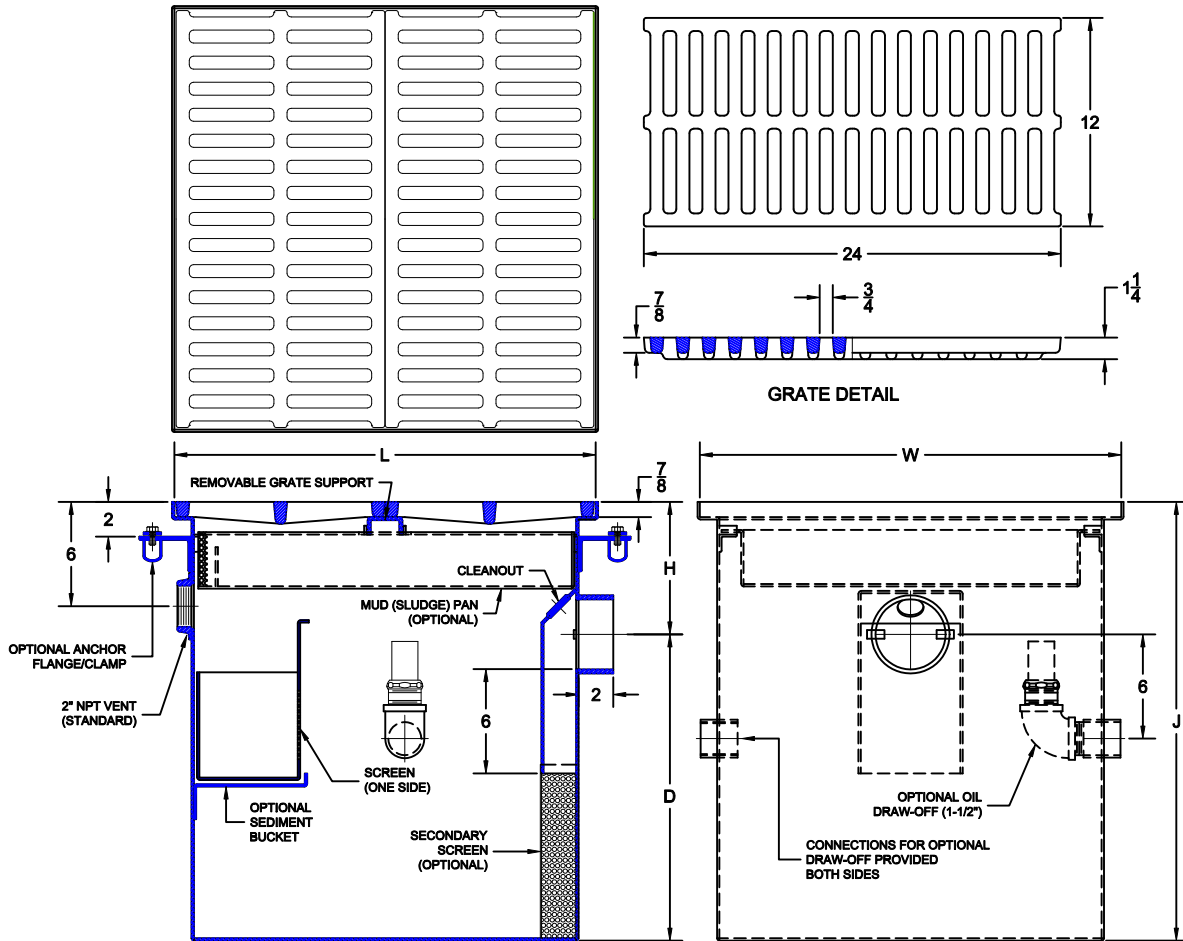


OIL / SEDIMENT INTERCEPTOR



5800

FABRICATED STEEL OIL / SEDIMEN INTERCEPTOR WITH A.R. EPOXY COATING, DUCTILE IRON GRATE(S), INTEGRAL DEEP SEAL TRAP, CLEANOUT, AND NO-HUB SIDE OUTLET.



✓	CATALOG NUMBER	PIPE SIZE *	STATIC CAPACITY (GAL)	SLUDGE CAPACITY (LBS) **	GRATE QTY	DIMENSIONS					WT (LBS)
						L	W	D	H	J	
	5800-04	3"	4	4	1	12 1/2	12 1/2	10 1/2	4 1/2	15	70.0
	5800-12	3"	9	12	1	12 1/2	24 1/2	10 1/2	4 1/2	15	140.0
	5800-60	4"	35	60	2	24 1/2	24 1/2	18	11	29	300.0
	5800-65	4"	47	65	2	24 1/2	24 1/2	24	11	35	350.0
	5800-70	4"	60	70	2	24 1/2	24 1/2	30	11	41	400.0
	5800-75	4"	72	75	2	24 1/2	24 1/2	36	11	47	425.0
	5800-100	4"	67	100	3	36 5/8	24 1/2	22	11	33	445.0
	5800-200	4"	90	200	4	48 5/8	24 1/2	22	11	33	560.0
	5800-300	4"	189	300	8	48 5/8	48 5/8	22	11	33	650.0

* PIPE SIZES INDICATED ARE NO-HUB OUTLET - TY-SEAL (PUSH-ON) REDUCES ONE PIPE SIZE (I.E. 3" NO-HUB BECOMES 2" TY-SEAL)

** SLUDGE CAPACITY IS PROVIDED FOR OPTIONAL MUD (SLUDGE) PAN (-27)

*** SEDIMENT PACKAGE INCLUDES MUD PAN, SEDIMENT BUCKET & SECONDARY SCREEN (-271)

OPTIONS

Suffix	Description
<input type="checkbox"/> 5	VANDAL PROOF GRATES
<input type="checkbox"/> 24	ANCHOR FLANGE
<input type="checkbox"/> 26	ANCHOR FLANGE W/ CLAMP DEVICE
<input type="checkbox"/> 27	MUD (SLUDGE) PAN
<input type="checkbox"/> 183	OIL DRAW OFF CONNECTION

OPTIONS

Suffix	Description
<input type="checkbox"/> 271	SEDIMENT PACKAGE ***
<input type="checkbox"/> 304	S/S VENEER TOP
<input type="checkbox"/> SS	ALL STAINLESS STEEL
<input type="checkbox"/> TY	TY-SEAL (PUSH-ON GASKET)
<input type="checkbox"/> XT	INTEGRAL EXTENSION (Specify H)

AutoCad.dwg

9-12-13

WADE • 11910 CR 492 • Tyler, TX 75706 • PH (903)882-5511 • FAX (888)879-9233
 WADE Canada • 6200 Rue Principale • Ste-Croix Quebec GOS 2H0 • PH (800)463-3480 Ext. 2227 • FAX (888)879-9233

A-5861

Approval Date: _____
 Customer Approval: _____
 Job Location: _____
 Job Name: _____
 Dimensional Data (Inches/mm) are Subject to Manufacturers Tolerance and Change Without Notice.

Wade Division / Tyler Pipe Assumes No Responsibility For Superseded or Voided Data