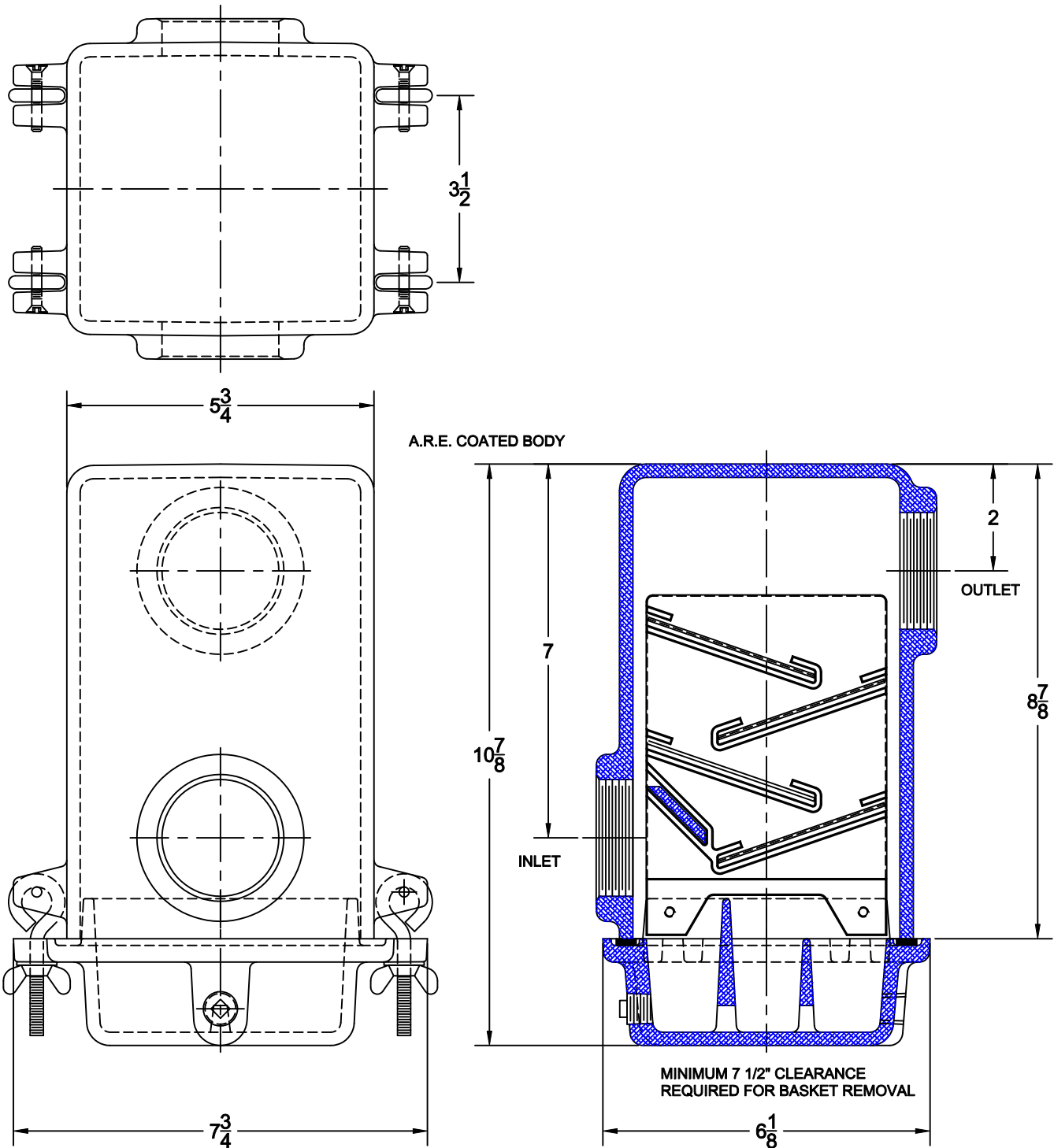


SOLIDS INTERCEPTOR



5730

CAST ALUMINUM SOLIDS INTERCEPTOR WITH GASKETED COVER, CAST BRONZE SCREEN HOLDERS, A.R.E. PAINTED COATING, S/S PERFORATED SCREEN ELEMENTS, NPT DRAIN PLUG AND THREADED INLET/OUTLET.



OPTIONS

Cat. No.	Pipe Size	Wt. Lbs.	Suffix	Description
5732	2	10.0	63	A.R.E. EPOXY POWDER COATING
			RB	SET (4) REPLACEMENT SCREENS

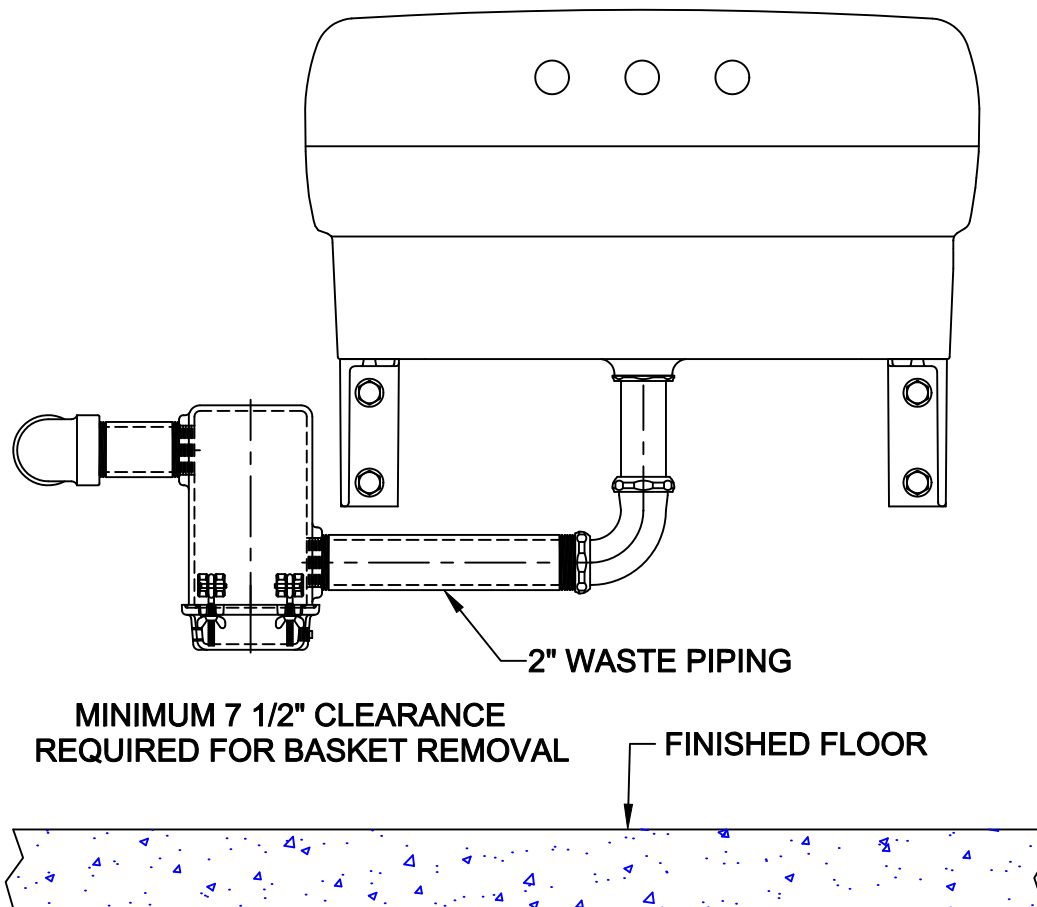
AutoCad.dwg

SOLIDS INTERCEPTOR



5730

CAST ALUMINUM SOLIDS INTERCEPTOR WITH GASKETED COVER, CAST BRONZE SCREEN HOLDERS, A.R.E. PAINTED COATING, S/S PERFORATED SCREEN ELEMENTS, NPT DRAIN PLUG AND THREADED INLET/OUTLET.



SIZING

There are no sizing requirements for this interceptor. This unit is designed with 2" inlet and outlet and is capable of handling the drainage volumes for 2" pipe size.

DESIGN

The Wade 5730 interceptor is designed to retain all types of solids (metal particles, plaster, clay, etc.) The interceptor works through the principle gravity separation. Waste from the fixture passes through stainless steel screens which retains the accumulating debris before it can pass through the sanitary sewer system.

OPERATION

The waste water from the fixture flows from the inlet piping into the interceptor inlet, into the main body chamber, then exits the chamber into the sanitary sewer drain system. The interceptor replaces the fixture p-trap.

MAINTENANCE

Cleaning should be done on a periodic basis before the basket becomes clogged. Place a container under the brass cleanout plug and loosen until water seeps and the unit is completely drained. Remove the bottom cover and clean the accumulated debris. Rinse with clean warm water to clear scum from the perforations. Re-install the cover and tighten the brass plug. Efficiency of operation is directly related to the level of maintenance.

AutoCad.dwg