

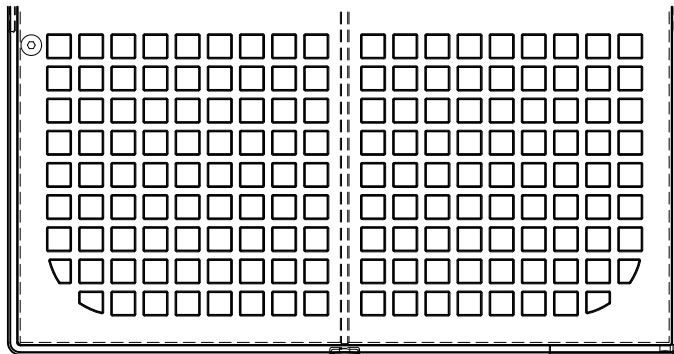
# FLOOR SINK



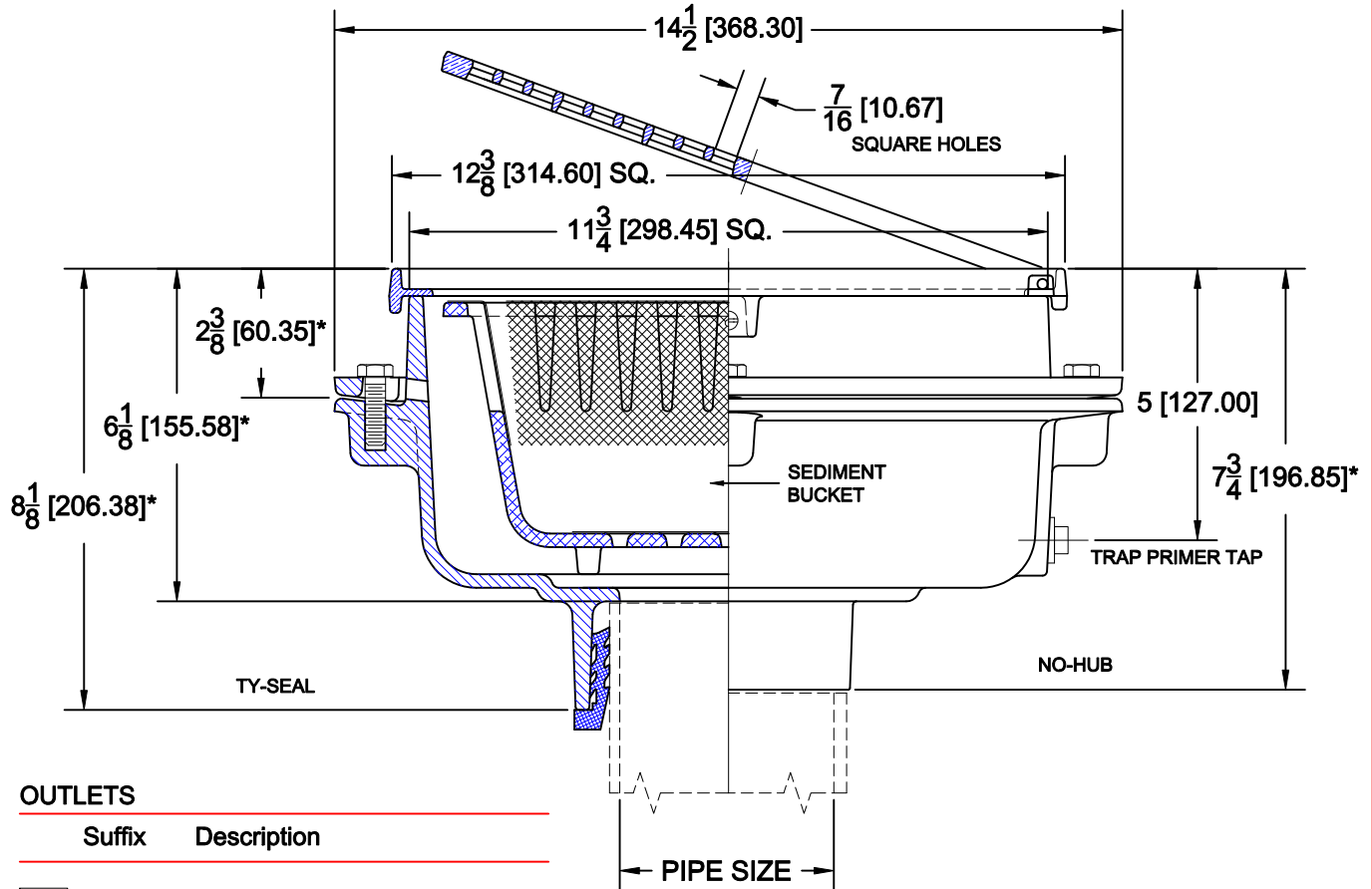
Approval Date  
 Customer Approval  
 Job Location  
 Job Name  
 Dimensional Data (Inches/mm) are Subject to Manufacturers Tolerance and Change Without Notice.  
 Wade Division / Tyler Pipe Assumes No Responsibility For Superseded or Voided Data

9130-1-6-123

CAST IRON 12" SQUARE FLOOR SINK WITH A.R.E. PORCELAIN COATED INTERIOR, ALUMINUM SEDIMENT BUCKET WITH S/S MESH LINING, 1/2" NPT TRAP PRIMER TAP (PLUGGED), SATIN FINISH NICKEL BRONZE TOP WITH HINGED GRATE, ANCHOR FLANGE, SEEPAGE HOLES AND BOTTO



FREE AREA = 55.36 SQ.IN.



**OUTLETS**

Suffix	Description
NH	NO-HUB
TY	TY-SEAL

**OPTIONS**

Cat. No.	Pipe Size	Wt. Lbs.	Suffix	Description
9133-1-27	3 (75)	47.0	5	VANDAL PROOF GRATE
9134-1-27	4 (100)	47.0	15	HALF GRATE
			16	THREE QUARTER GRATE
			26	CLAMP DEVICE
			27	ALUMINUM SEDIMENT BUCKET
			64	A.R.E. CAST IRON TOP

NOTE: TY-SEAL OUTLETS WILL ACCOMODATE IPS PIPE SIZES IN 3" & 4". (PLASTIC, STEEL, ETC.)

AutoCad.dwg