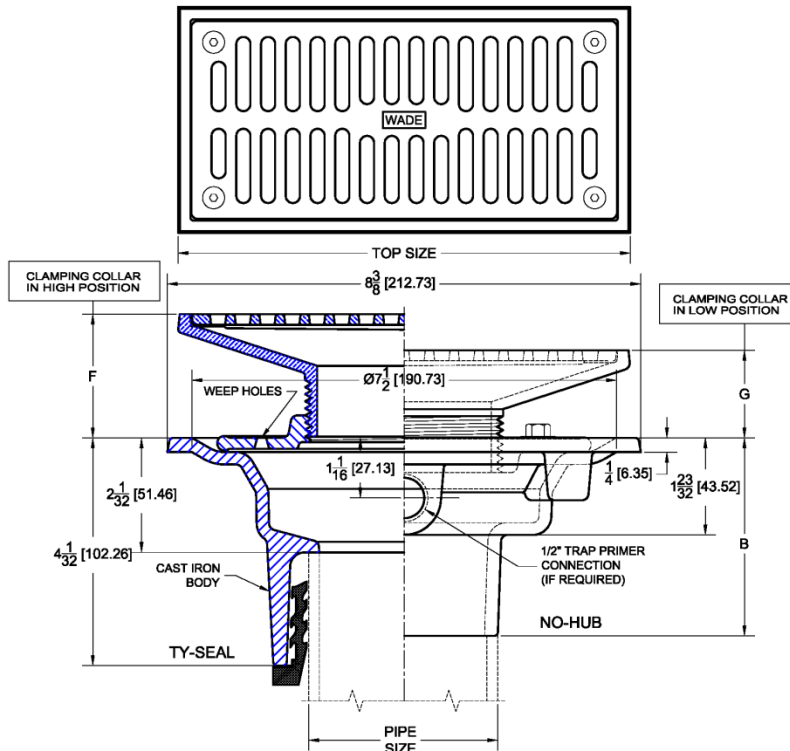


1100-H Floor Drain with Rectangular Adjustable Top

Regularly Furnished: Painted cast iron floor drain body with anchor flange, seepage openings, reversible clamping collar, adjustable top, secured grate, 1/2" NPT trap primer tap (plugged) and bottom outlet. H4x8 has slotted pattern grate; H4x12 and H5x17 has perforated square hole grate.

ASME Load Rating = L.D. (Light Duty) Under 2,000 Lbs.



OUTLET	NO-HUB	INSIDE CAULK	THREADED
B	3 1/2 (88.9)	4 1/4 (107.9)	2 3/4 (69.9)

Top Size	F		G	
	Min	Max	Min	Max
4x8	1-5/8 (41)	2-1/4 (57)	1-1/8 (29)	1-5/8 (41)
4x12	1-5/8 (41)	2-1/4 (57)	1-1/8 (29)	1-5/8 (41)
5x17	2-1/4 (57)	3 (76)	1-3/4 (44)	2-5/8 (67)

✓	Top Size & Type	Outlet Size In.	Grate Free Area (Sq.In.)
	H4x8	2,3,4,6	9.0
	H4x12	2,3,4,6	13.4
	H5x17	2,3,4,6	31.8

Top Material		
✓	Suffix	Description
	-1	Satin Finish Nickel Bronze
	-2	Satin Finish Bronze
	-85	Satin Finish 304 Stainless Steel
	-102	Polished Chrome Plated

Outlet Variations		
✓	Type	Designation
	No-Hub	2NH, 3NH, 4NH, 6NH
	Push-On	2TY, 3TY, 4TY
	Inside Caulk	2IC, 3IC, 4IC
	Threaded	2IPS, 3IPS, 4IPS

Funnels		
✓	Suffix	Description
	-EF4	4" Round Funnel Assembly
	-EF6	6" Round Funnel Assembly
	-EG8	8" Elongated Funnel Assembly

Options		
✓	Suffix	Description
	-ARC	Acid Resistant Coating (C.I. Parts)
	-DC	Debris Cover
	-DIA	Deck Installation Assembly
	-SO	90° Side Outlet (No-Hub Only)
	-TSD	Trap Seal Device (Model 4405)
	-8	Secondary Strainer
	-27	Sediment Bucket
	-31	Backwater Valve
	-33	Closure Plug
	-39	Galvanized Iron Parts
	-83	Special Engraving
	-94	Extension Adapter