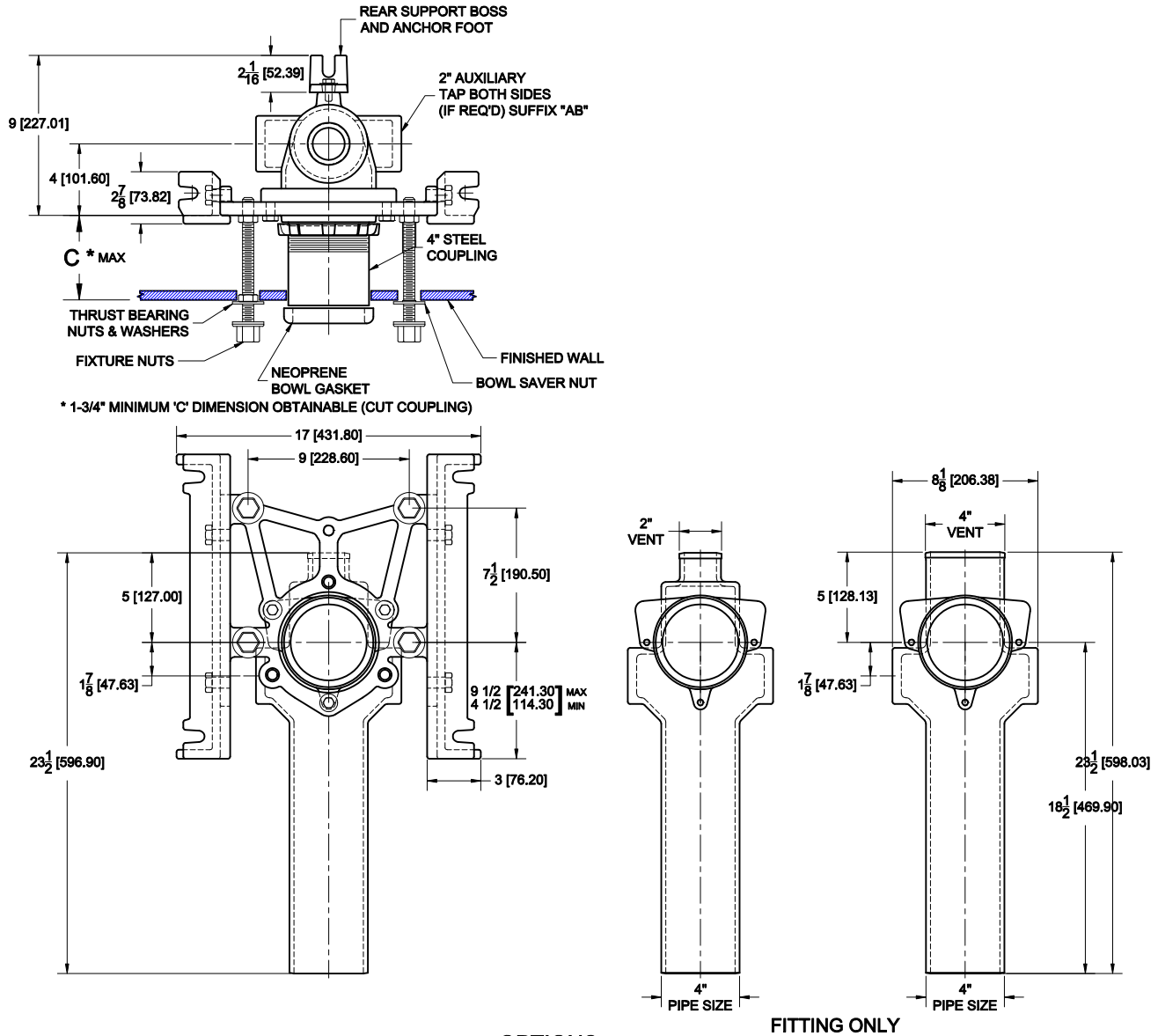


CLOSET CARRIER



350-M26 SERIES

NO-HUB VERTICAL FIXED SINGLE WATER CLOSET CARRIER WITH UNIVERSAL FOOT SUPPORTS, REAR ANCHOR FOOT, THREADED STEEL CLOSET COUPLING WITH O-RING SEAL, FIXTURE SUPPORT STUDS, CHROME PLATED CAP NUTS, NEOPRENE BOWL GASKET, INTEGRAL TEST CAP AND STUD PROTECTORS. CONFORMS TO ASME A112.6.1M (UP TO 300 LBS)



CAT.NO.	VENT SIZE	WT.LB.
<input type="checkbox"/> 350-N2-M26__	2" (50)	135.0
<input type="checkbox"/> 350-N4-M26__	4" (100)	135.0

OPTIONS

Suffix	Description
<input type="checkbox"/> M26-3.5	COUPLING PACKAGE (2" MAX "C" DIMENSION)
<input type="checkbox"/> M26-4	COUPLING PACKAGE (2.5" MAX "C" DIMENSION)
<input type="checkbox"/> M26-5	COUPLING PACKAGE (3.5" MAX "C" DIMENSION)†
<input type="checkbox"/> M26-6	COUPLING PACKAGE (4.5" MAX "C" DIMENSION)†
<input type="checkbox"/> M26-7	COUPLING PACKAGE (5.5" MAX "C" DIMENSION)
<input type="checkbox"/> M26-8	COUPLING PACKAGE (5.5" MAX "C" DIMENSION)
<input type="checkbox"/> M26-9	COUPLING PACKAGE (7.5" MAX "C" DIMENSION)
<input type="checkbox"/> AB	AUXILIARY INLETS (2" NPT) BOTH SIDES

† AUXILIARY FOOT SUPPORT RECOMMENDED (AM4)

AutoCad.dwg