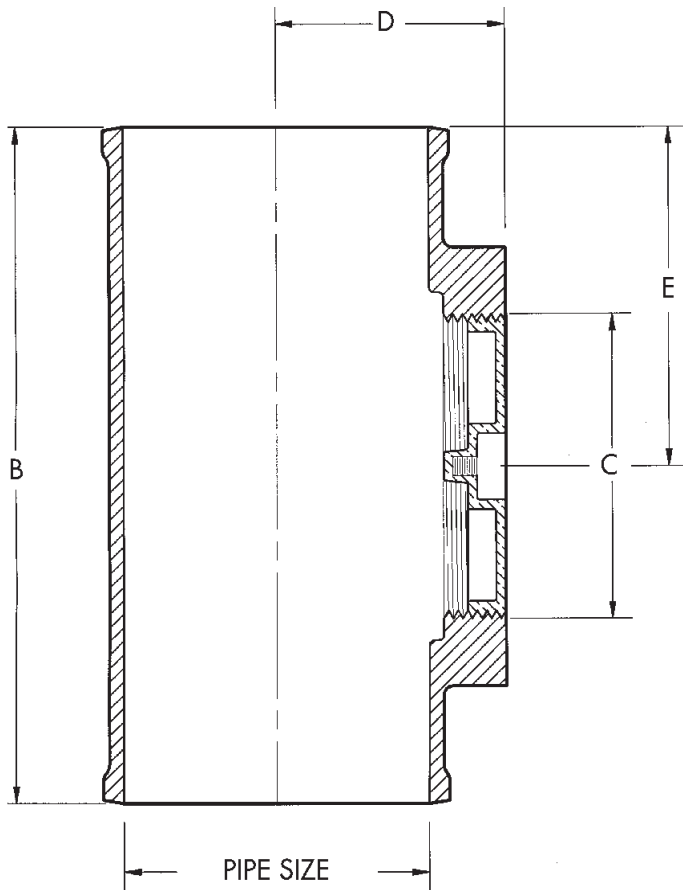
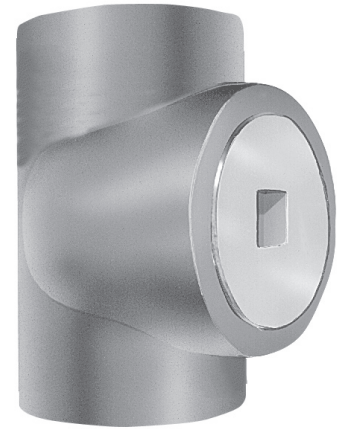


Cleanout Tee w/ Plug



8560 (B orE) Cast Iron cleanout tee with spigot inlet/outlet and threaded brass raised head, or countersunk plug drilled and tapped for 1/4"-20 screw.



Cat. No.	Pipe Size	B	C Plug	D	E	Wt. Lbs.
8562	2	6 3/8	2	2	3 3/16	2.7
8563	3	7 3/4	3	2 3/4	3 7/8	4.8
8564	4	8 7/8	4	3	4 7/16	9.4
8565	5	11 1/2	5	4 1/2	5 3/4	14.7
8566*	6	12 1/2	6	5	6 1/4	18.4

* Type E Plug Only

PLUG TYPE

Suffix	Description
B.....	Raised Head Brass Plug
E.....	Countersunk Brass Plug