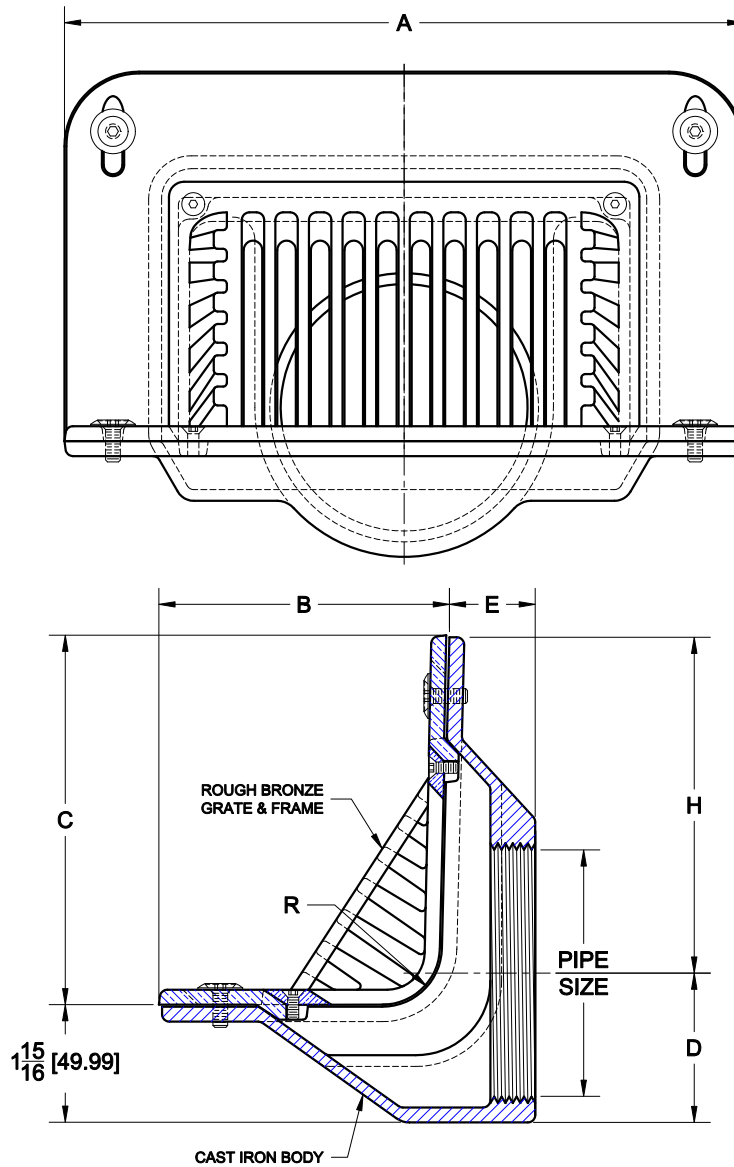


PARAPET DRAIN



3270

PAINTED CAT IRON PARAPET DRAIN WITH THREADED SIDE OUTLET, BRONZE FLASHING CLAMP AND SECURED OBLIQUE GRATE.



PIPE SIZE	DIMENSIONS (INCHES)						DIMENSIONS (MM)					
	A	B	C	D	E	H	A	B	C	D	E	H
2 (50)	11 1/2	4 1/2	6	1 1/2	1 3/4	6 11/16	292.1	114.3	152.4	38.1	44.5	169.9
3 (75)	11 1/2	4 1/2	6	2	1 3/4	6 1/8	292.1	114.3	152.4	50.8	44.5	155.6
4 (100)	11 1/2	4 1/2	6	2 1/2	1 3/4	5 5/8	292.1	114.3	152.4	63.5	44.5	142.9
5 (125)	13 1/2	8 3/8	8 3/8	3 3/16	3 9/16	8 3/8	342.9	212.7	212.7	80.9	90.5	212.7
6 (150)	13 1/2	8 3/8	8 3/8	3 11/16	3 9/16	7 13/16	342.9	212.7	212.7	96.8	90.5	198.4
8 (200)	13 1/2	8 3/8	8 3/8	5	4	8 13/16	342.9	212.7	212.7	127.0	101.6	223.8

NOTE: GRATES FOR 5", 6" & 8" PIPE SIZES ARE LOOSE SET.

OPTIONS

Cat. No.	Pipe Size	Wt. Lbs.	Suffix	Description
<input type="checkbox"/> 3272	2 (50)	19.0	<input type="checkbox"/> 39	GALVANIZED IRON PARTS
<input type="checkbox"/> 3273	3 (75)	17.0	<input type="checkbox"/> 179	SECURITY SCREWS
<input type="checkbox"/> 3274	4 (100)	17.0		
<input type="checkbox"/> 3275	5 (125)	28.0		
<input type="checkbox"/> 3276	6 (150)	29.0		
<input type="checkbox"/> 3278	8 (200)	30.0		

AutoCad.dwg